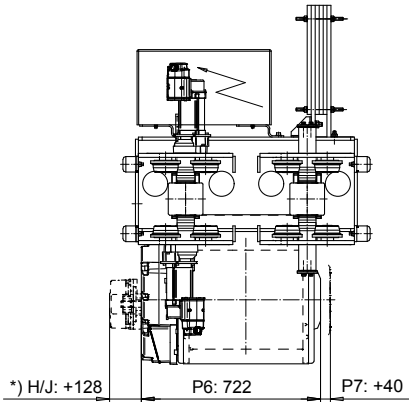
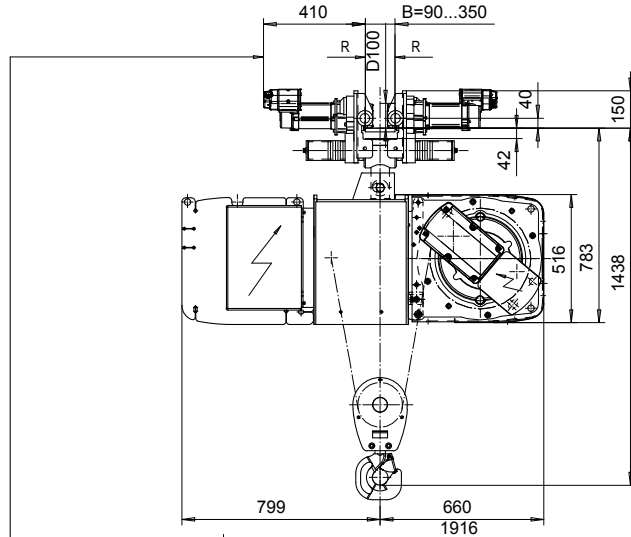
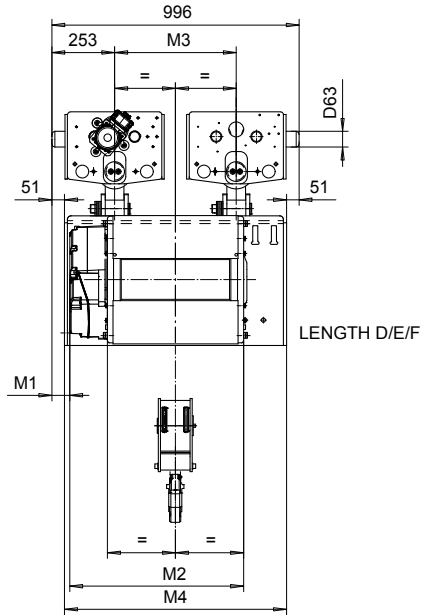


NORMAL HEADROOM, CURVED TRACK, 2 PART DOUBLE

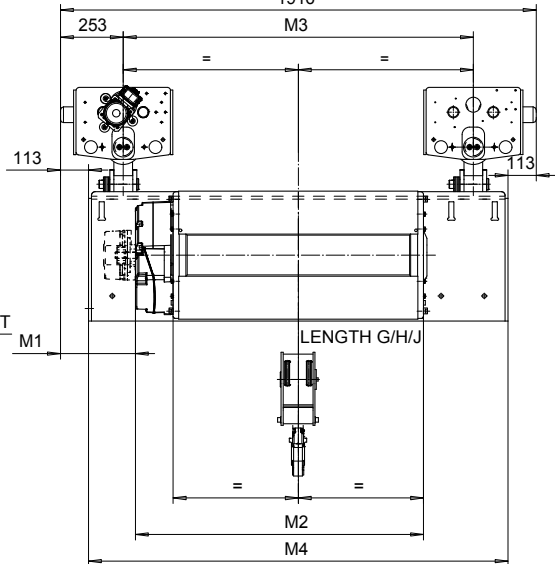
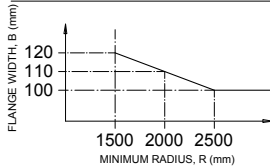
Hoist type:

SI-50Hz

SX5022...N0



MINIMUM RADIUS CURVE CHART



Load (kg)	Class Fem/ISO	Hoisting speed (m/min)			
		Gear+Motor code:			
		E+P5	F+P5	H+P6	J+P7
4000	3m/M6	8/1.3	10/1.7	16/2.7	20/3.3
5000	2m/M5	8/1.3	10/1.7	16/2.7	20/3.3
+ weight (kg):		-	-	60	80

HOL (m)	Length code	M1 (mm)	M2 (mm)	M3 (mm)	M4 (mm)	Weight (kg)
8.5	D	72	697	490	894	1080
13	E	12	817	490	894	1160
18	F	- 63	967	490	894	1240
25	G	302	1157	1410	1690	1490
33.5	H	177	1407	1410	1690	1580
46	J	2	1757	1410	1690	1700

Note:
Weight calculated with P5.

Note:
*) Gear brake as standard brake for drum lengths H and J

This document is the absolute property of R&M Materials Handling, Inc. This document must not be copied without the written permission of R&M Materials Handling, Inc. The contents thereof must not be disclosed to a third party nor be used for any unauthorized purpose. Contravention will be prosecuted.

Design	Chd	Appd	Ref Drawing	QC-N-22
2005-08-24			TROLLEY; NORMAL HEADROOM	1 of 15 Folder
SLEQDOCV			CURVED TRACK, 2x2 ROPE FALLS	
R&M			D004206-A	Issue 1