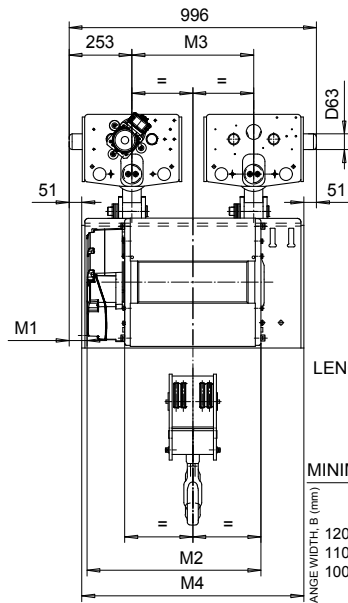


# NORMAL HEADROOM, CURVED TRACK, 4 PART DOUBLE

Hoist type:

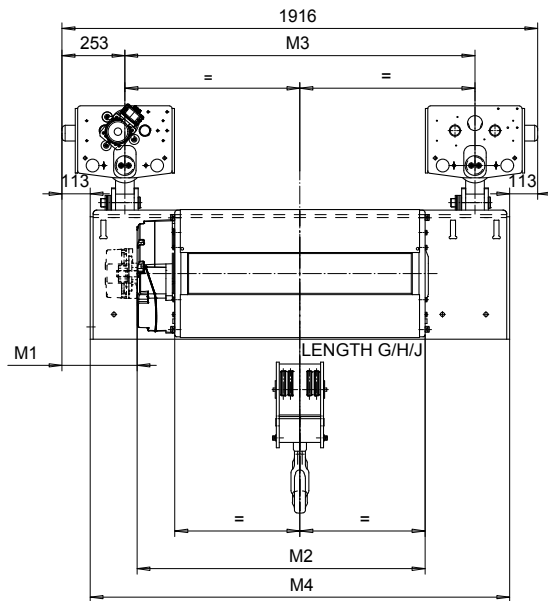
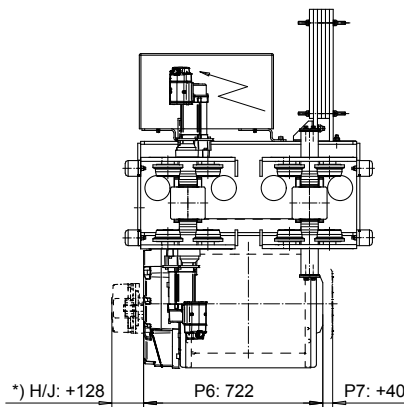
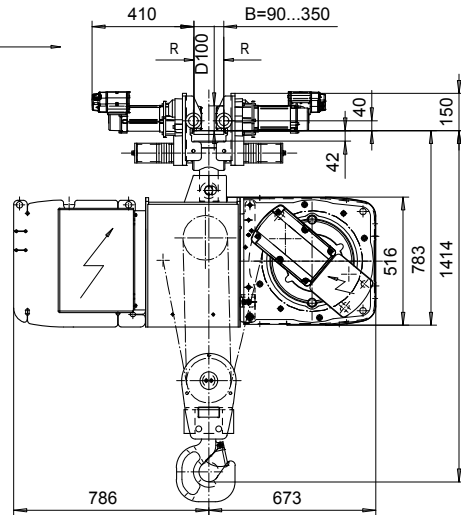
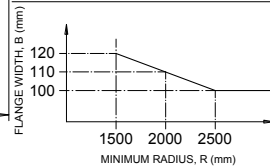
SX5042...N0

SI-50Hz



LENGTH D/E/F

MINIMUM RADIUS CURVE CHART



Load (kg)	Class Fem/ISO	Hoisting speed (m/min)			
		Gear+Motor code:			
		E+P5	F+P5	H+P6	J+P7
6300	3m/M6	4/0.7	5/0.8	8/1.3	10/1.7
8000	3m/M6	4/0.7	5/0.8	8/1.3	10/1.7
10000	2m/M5	4/0.7	5/0.8	8/1.3	10/1.7
+ weight (kg):		-	-	60	80

HOL (m)	Length code	M1 (mm)	M2 (mm)	M3 (mm)	M4 (mm)	Weight (kg)
4	D	72	697	490	894	1060
6.5	E	12	817	490	894	1140
9	F	-63	967	490	894	1220
12.5	G	302	1157	1410	1690	1460
16.5	H	177	1407	1410	1690	1560
23	J	2	1757	1410	1690	1740

Note:  
Weight calculated with P5.

Note:  
\*) Gear brake as standard brake for drum lengths H and J

This document is the absolute property of R&M Materials Handling, Inc. This document must not be copied without the written permission of R&M Materials Handling, Inc. The contents thereof must not be disclosed to a third party nor be used for any unauthorized purpose. Contravention will be prosecuted.

ETVPH Design	ETVPH Chd	Appd	Ref Drawing	QC-N-24
2005-08-24 Date	TROLLEY; NORMAL HEADROOM			1 of 15 Folder
SLEQDOCV Owner Dept	CURVED TRACK, 2x4 ROPE FALLS			
R&M R&M MATERIALS HANDLING, INC. HOIST & CRANE PRODUCTS SHEWAN-WATSON, INC.	D004207-A			Issue 1