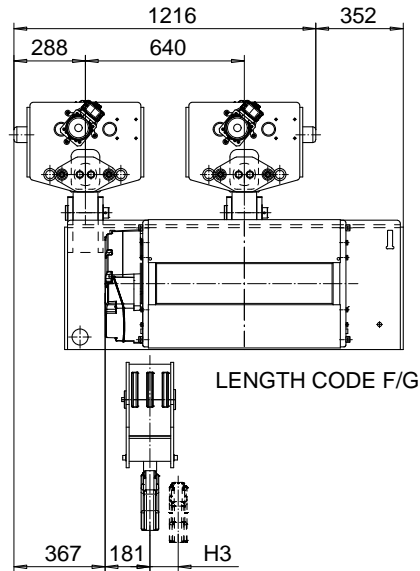
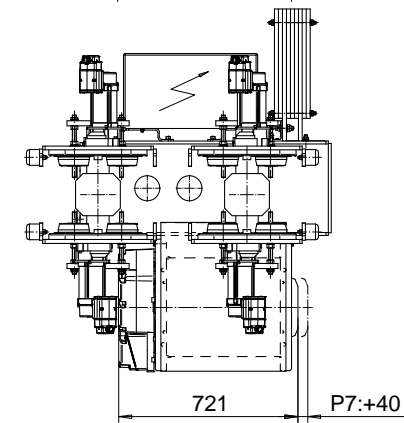
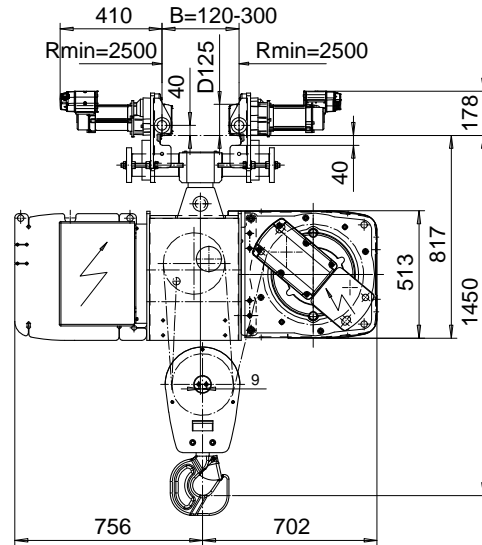
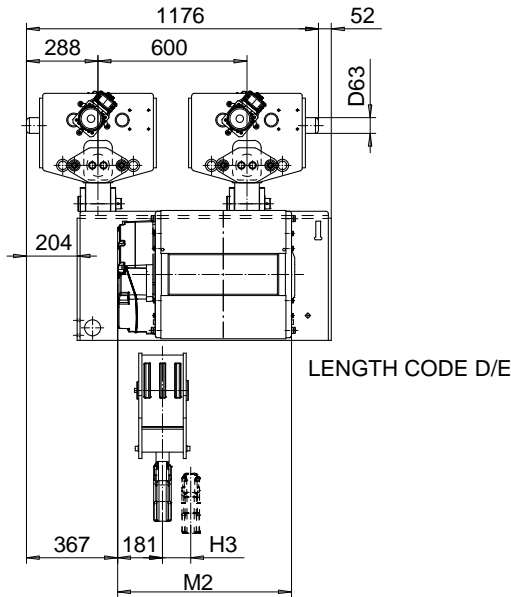


# NORMAL HEADROOM, CURVED TRACK, 6 PART SINGLE

Hoist type:

SX5 061...N0

SI-50Hz



Load (kg)	Class Fem/ISO	Hoisting speed (m/min)		
		Gear+Motor code:		
		F+P5	H+P6	J+P7
12000	3m/M6	3.2/0.5	5/0.8	6.3/1.1
15000	2m/M5	3.2/0.5	5/0.8	6.3/1.1
+ weight (kg):		-	60	80

HOL (m)	Length code	M2 (mm)	H3 (mm)	Weight (kg)
6	D	682	53	1250
8	E	802	78	1300
10	F	952	98	1370
13	G	1142	132	1450

This document is the absolute property of R&M Materials Handling, Inc. This document must not be copied without the written permission of R&M Materials Handling, Inc. The contents thereof must not be disclosed to a third party nor be used for any unauthorized purpose. Contravention will be prosecuted.

ETTPH Design	ETTPH Chd	Appd	Ref Drawing	QC-N-06
2005-08-26 Date	TROLLEY; NORMAL HEADROOM			1 of 13 Folder
SLEQDOCV Owner Dept	CURVED TRACK, 6 ROPE FALLS			
R&M MATERIALS HANDLING, INC. SHEET & GEAR PRODUCTS SHEPHERD, OHIO	D004208-A			Issue 1