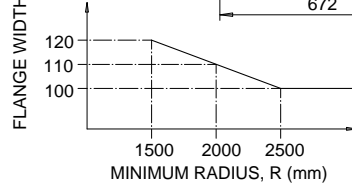
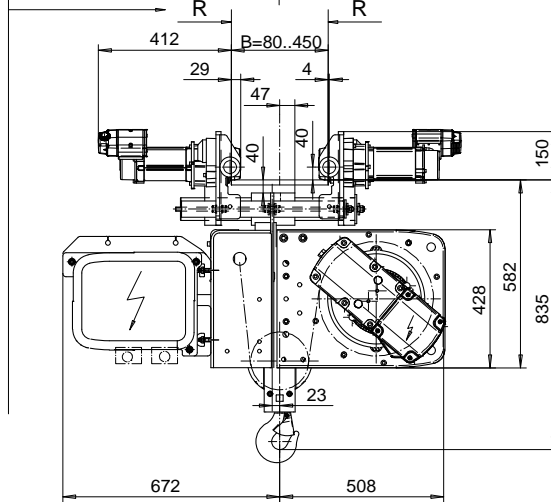
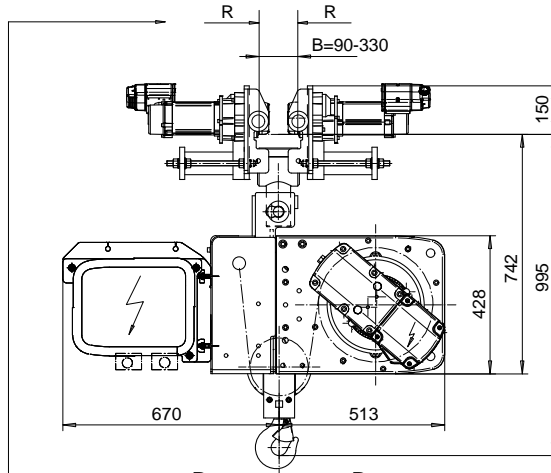
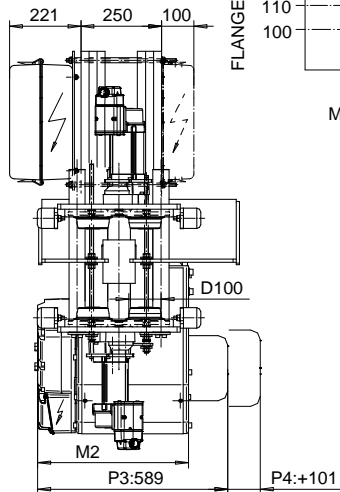
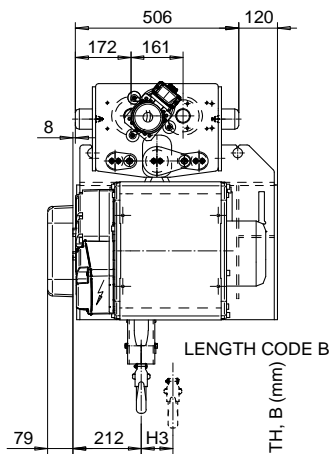
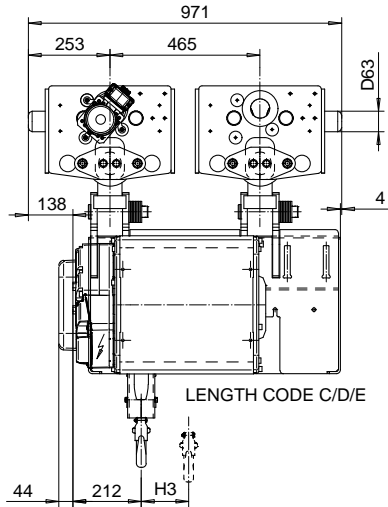


**NORMAL HEADROOM, CURVED TRACK; 2 PART SINGLE**  
**Hoist type:**  
**SX4021...N0**

**SI-60Hz**



Load (kg)	Class Fem/ISO	Hoisting speed (m/min)		
		Gear+Motor code:		
		E+P3	F+P3	H+P4
1600	3m/M6	9.5/1.6	12/2	19/3.2
2000	3m/M6	9.5/1.6	12/2	19/3.2
2500	2m/M5	9.5/1.6	12/2	19/3.2
+ weight (kg):		-	-	40

HOL (m)	Length code	M2 (mm)	H3 (mm)	Weight (kg)
12	B	467	98	380
18	C	567	147	500
24	D	667	198	540
30	E	787	258	550

This document is the absolute property of R&M Materials Handling, Inc. This document must not be copied without the written permission of R&M Materials Handling, Inc. The contents thereof must not be disclosed to a third party nor be used for any unauthorized purpose. Contravention will be prosecuted.

ETTVPH Design	ETTVPH Chd	Appd	Ref Drawing	QB-N-02
2004-12-23 Date	TROLLEY; NORMAL HEADROOM			1-10 Folder
SLEQDOCV Owner Dept	CURVED TRACK; 2 ROPE FALLS			Issue
R&M MATERIALS HANDLING, INC. HOIST & CRANE PRODUCTS SARASOTA, FL, USA	D003840-A			1