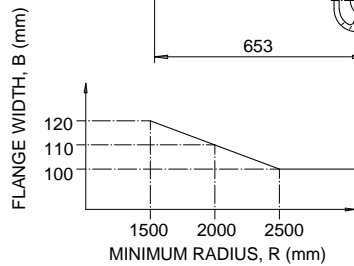
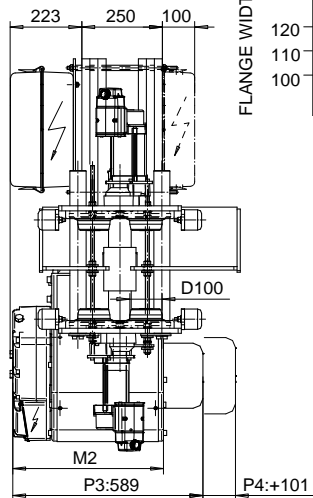
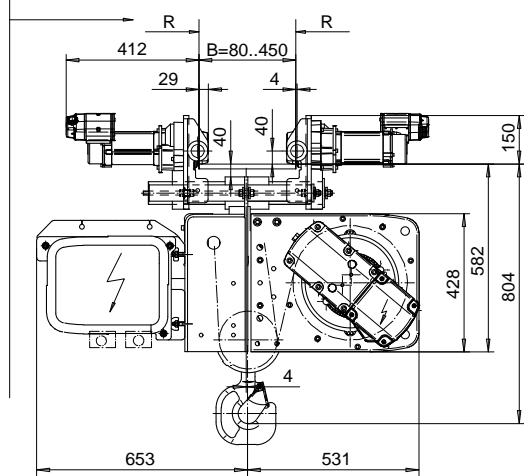
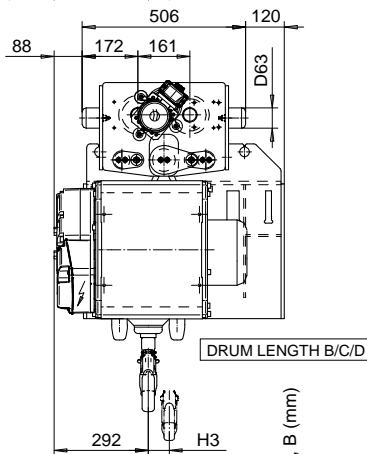
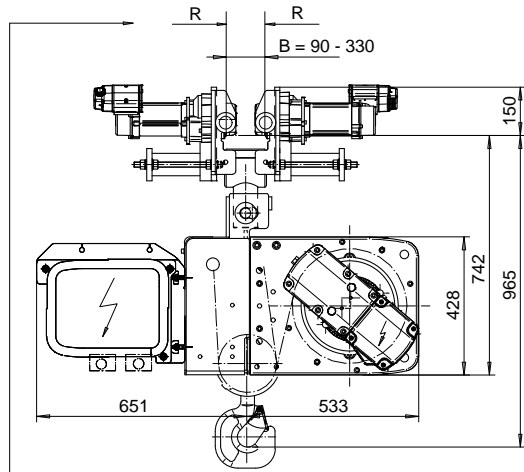
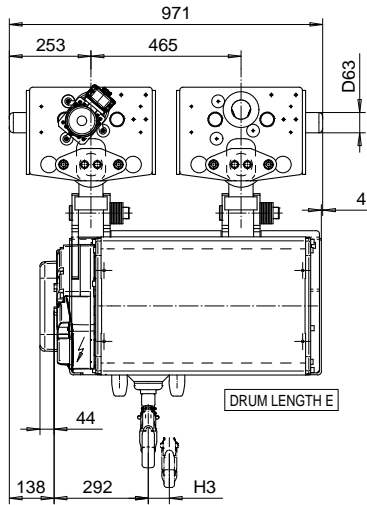


# NORMAL HEADROOM, CURVED TRACK; 4 PART SINGLE

Hoist type:  
SX4 041...N0

SI-60Hz



Load (kg)	Class Fem/ISO	Hoisting speed (m/min)		
		Gear+Motor code:		
		E+P3	F+P3	H+P4
3200	3m/M6	4.8/0.8	6/1	9.5/1.6
4000	3m/M6	4.8/0.8	6/1	9.5/1.6
5000	2m/M5	4.8/0.8	6/1	9.5/1.6
+ weight (kg):		-	-	40

HOL (m)	Length code	M2 (mm)	H3 (mm)	Weight (kg)
6	B	467	49	400
9	C	567	73	430
12	D	667	97	440
15	E	787	121	550

This document is the absolute property of R&M Materials Handling, Inc. This document must not be copied without the written permission of R&M Materials Handling, Inc. The contents thereof must not be disclosed to a third party nor be used for any unauthorized purpose. Contravention will be prosecuted.

ETVPH Design 2004-12-23 Date	ETVPH Chd Appd	Ref Drawing	QB-N-04
SLEQDOCV Owner Dept	TROLLEY; NORMAL HEADROOM CURVED TRACK; 4 ROPE FALLS		1-10 Folder
R&M R&M MATERIALS HANDLING, INC. SHEET & GEAR PRODUCTS SHEPHERD, OHIO	D003841-A		Issue 1