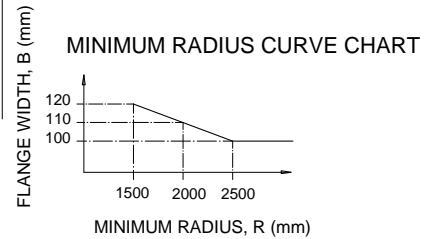
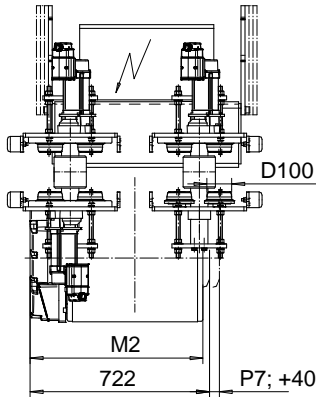
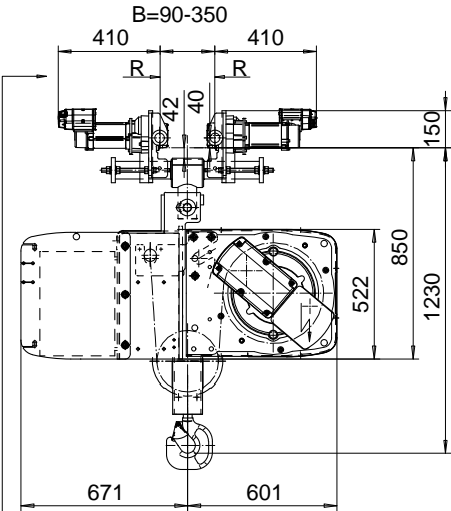
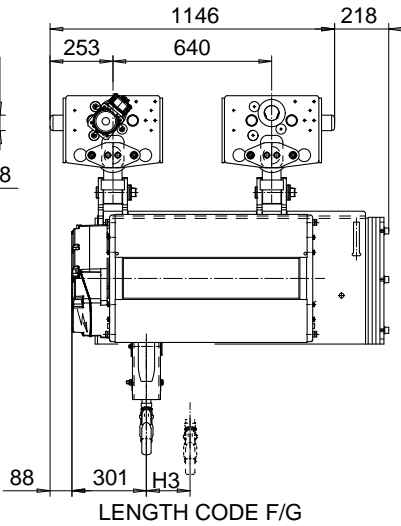
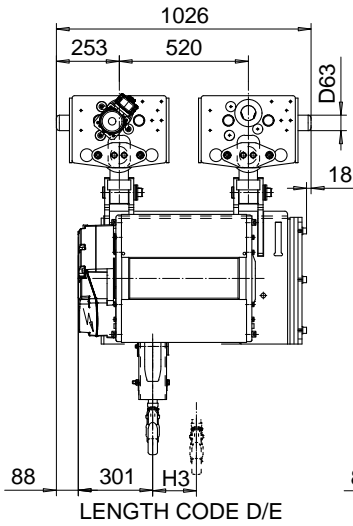


NORMAL HEADROOM, CURVED TRACK, 2 PART SINGLE

Hoist type:

SI-60Hz

SX5 021...N0



Load (kg)	Class Fem/ISO	Hoisting speed (m/min)			
		Gear+Motor code:			
		E+P5	F+P5	H+P6	J+P7
4000	3m/M6	9.5/1.6	12/2	19/3.2	24/4
5000	2m/M5	9.5/1.6	12/2	19/3.2	24/4
+ weight (kg):		-	-	60	80

HOL (m)	Length code	M2 (mm)	H3 (mm)	Weight (kg)
18	D	697	176	820
24	E	817	235	890
32	F	967	309	940
40	G	1157	403	1000

This document is the absolute property of R&M Materials Handling, Inc. This document must not be copied without the written permission of R&M Materials Handling, Inc. The contents thereof must not be disclosed to a third party nor be used for any unauthorized purpose. Contravention will be prosecuted.

Design	Appd	Ref Drawing	QC-N-02
ETVPH 2005-06-20 Date		TROLLEY; NORMAL HEADROOM CURVED TRACK, 2 ROPE FALLS	1 of 13 Folder
SLEQDOCV Owner Dept			Issue 1
R&M R&M MATERIALS HANDLING, INC. HOIST & CRANE PRODUCTS SHELTONVILLE, OHIO		D004135-A	

D004135-A_1

QC-N-02