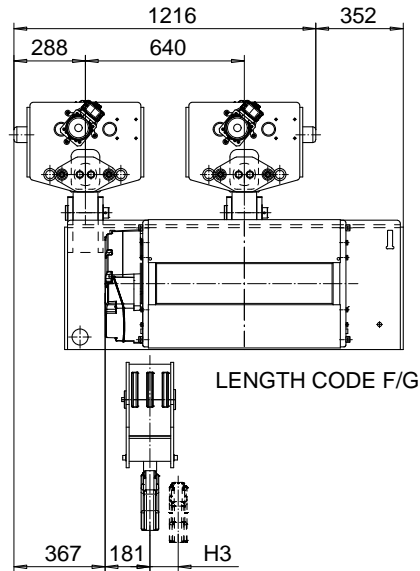
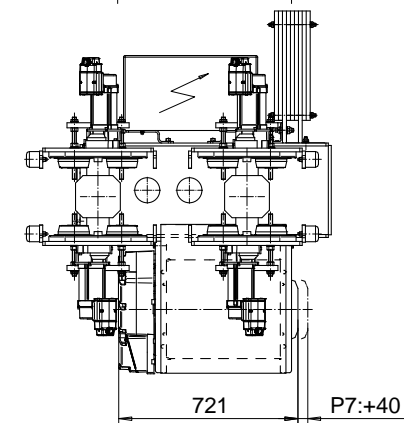
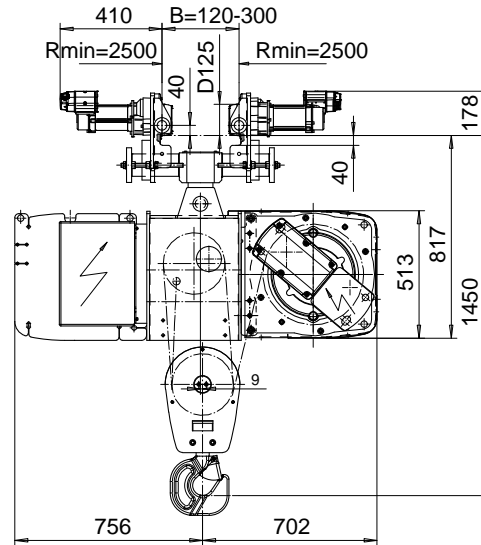
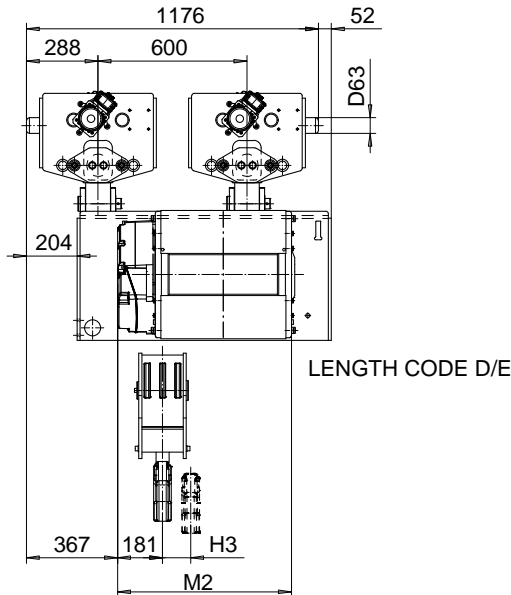


NORMAL HEADROOM, CURVED TRACK, 6 PART SINGLE

Hoist type:

SX5 061...N0

SI-60Hz



| Load (kg) | Class Fem/ISO | Hoisting speed (m/min) | | |
|----------------|------------------|------------------------|------|---------|
| | | Gear+Motor code: | | |
| | | F+P5 | H+P6 | J+P7 |
| 12000 | 3m/M6 | 3.8/0.6 | 6/1 | 7.5/1.3 |
| 15000 | 2m/M5 | 3.8/0.6 | 6/1 | 7.5/1.3 |
| + weight (kg): | | - | 60 | 80 |

| HOL (m) | Length code | M2 (mm) | H3 (mm) | Weight (kg) |
|------------|----------------|------------|------------|----------------|
| 6 | D | 682 | 53 | 1250 |
| 8 | E | 802 | 78 | 1300 |
| 10 | F | 952 | 98 | 1370 |
| 13 | G | 1142 | 132 | 1450 |

This document is the absolute property of R&M Materials Handling, Inc. This document must not be copied without the written permission of R&M Materials Handling, Inc. The contents thereof must not be disclosed to a third party nor be used for any unauthorized purpose. Contravention will be prosecuted.

| | | | | |
|---|----------------------------|------|-------------|-------------------|
| ETTPH Design | ETTPH Chd | Appd | Ref Drawing | QC-N-06 |
| 2005-08-26 Date | TROLLEY; NORMAL HEADROOM | | | 1 of 13 Folder |
| SLEQDOCV Owner Dept | CURVED TRACK, 6 ROPE FALLS | | | |
| R&M MATERIALS HANDLING, INC. SHEET & CRANE PRODUCTS SHEPHERD, OHIO | D004208-A | | | Issue 1 |