

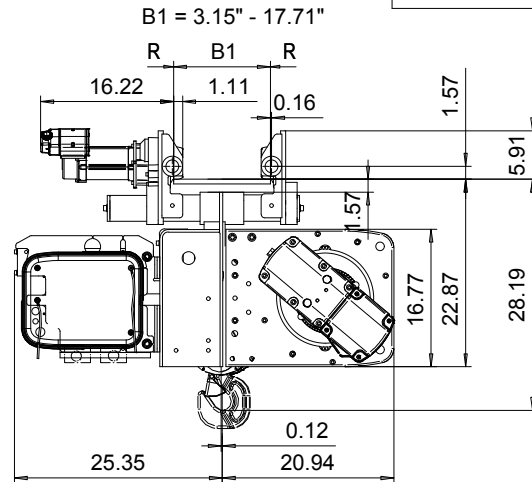
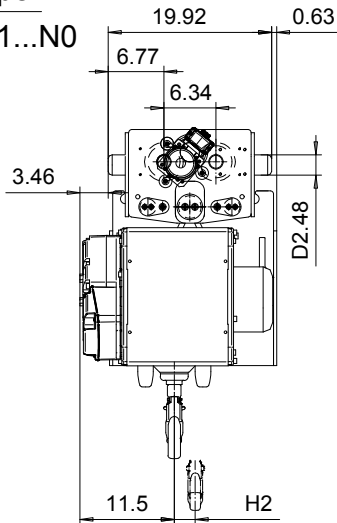
NORMAL HEADROOM, CURVED TRACK; 4 PART SINGLE

Hoist type:

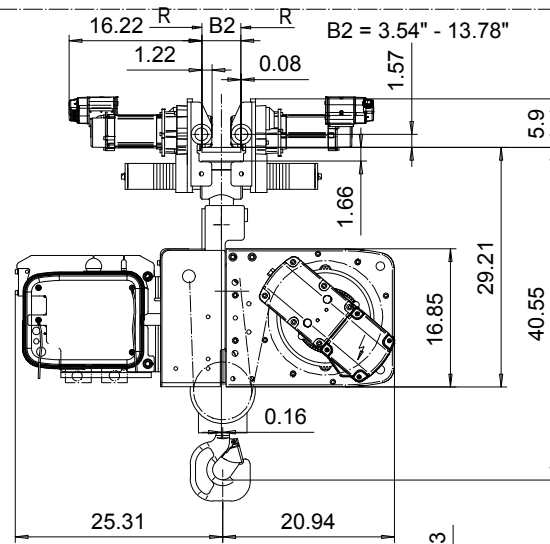
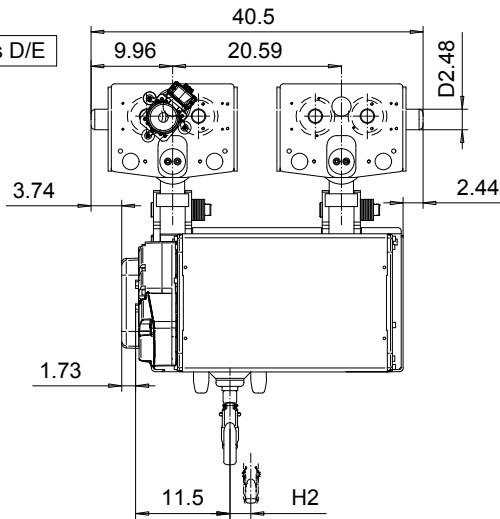
SX4 041...N0

US-60Hz

Lengths B/C



Lengths D/E

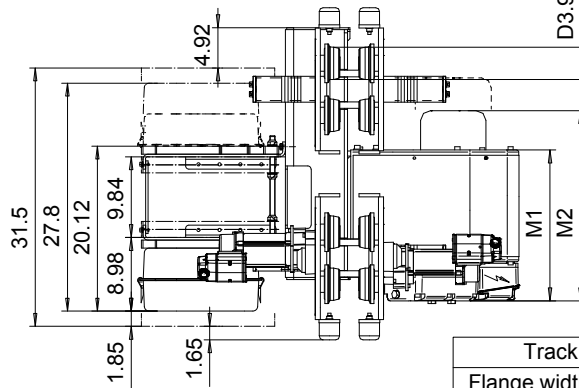


Motor Dimensions				
Motor	P3	P4	T3	T4
M2 (inch)	23.5	27.2	20	24
Weight (lb)	77	117	49	99

Hoist Dimensions				
HOL	Length	M1	H2	Weight
(ft)	code	(inch)	(inch)	(lb)
19'-8"	B	18.38	1.92	800
29'-6"	C	22.32	2.87	860
39'-4"	D	26.25	3.81	880
49'-2"	E	30.98	4.76	1100

Note: Weight calculated, when B = 11.81"

Load (TON)	Class ASME	Hoisting speed (ft/min)		
		Gear+Motor code:		
		E+P3	F+P3	H+P4
3	H4+	16/2.4	20/3.1	30/4.9
4	H4+	16/2.4	20/3.1	30/4.9
5	H4	16/2.4	20/3.1	30/4.9



Track Radius	
Flange width B	R min
3.15 - 4.29	98.5
4.33 - 4.68	78.7
4.72 - 17.7	59.1

Total weight = Hoist weight + Motor weight

This document is the absolute property of R&M Materials Handling, Inc. This document must not be copied without the written permission of R&M Materials Handling, Inc. The contents thereof must not be disclosed to a third party nor be used for any unauthorized purpose. Contravention will be prosecuted.

ETVPH Design	ETVPH Chd	Appd	Ref Drawing	QB-N-04
2004-12-23 Date	TROLLEY; NORMAL HEADROOM CURVED TRACK; 4 ROPE FALLS			3 of 9 Folder
SLEODOCV Owner Dept	R&M MATERIALS HANDLING, INC. HOIST & CRANE PRODUCTS SPRINGFIELD, OHIO			Issue 2
D003841-A				