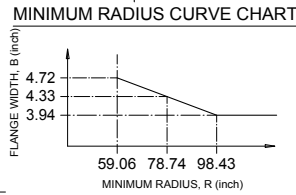
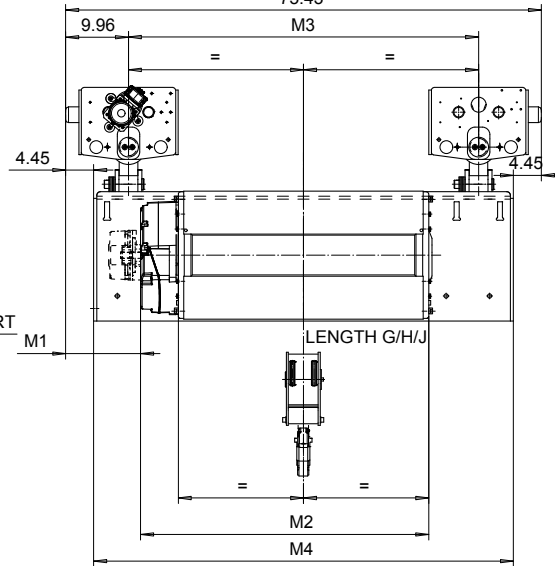
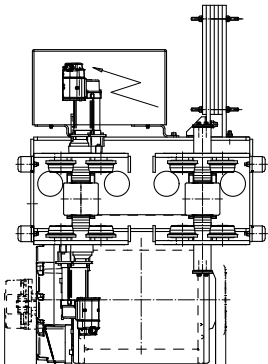
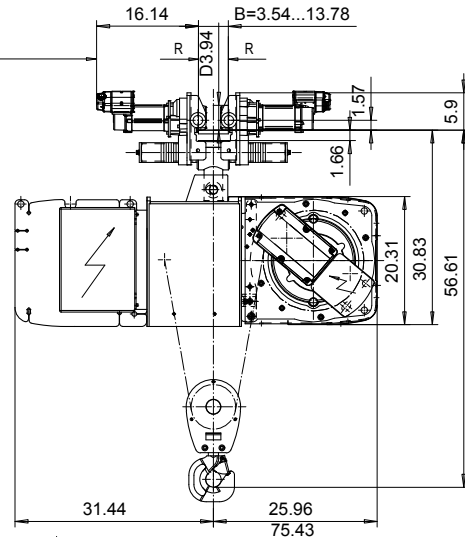
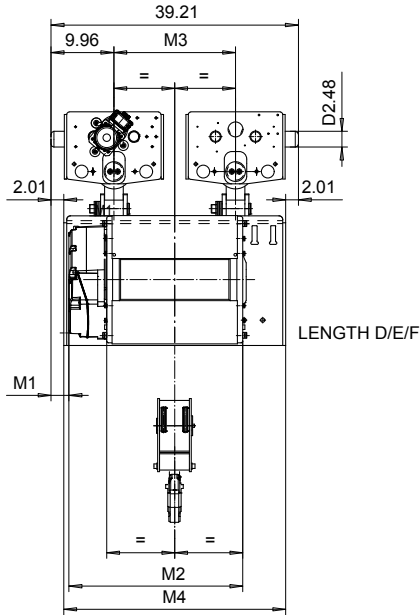


NORMAL HEADROOM, CURVED TRACK, 2 PART DOUBLE

Hoist type:

US-60Hz

SX5022...N0



*) H/J: 5.04

Load (TON)	Class ASME	Hoisting speed (ft/min)			
		E+P5	F+P5	H+P6	J+P7
4	H4+	30/4.9	40/6.7	60/9.8	80/12.5
5	H4	30/4.9	40/6.7	60/9.8	80/12.5
+ weight (lb):		-	-	120	160

HOL (ft)	Length code	M1 (inch)	M2 (inch)	M3 (inch)	M4 (inch)	Weight (lb)
27'-10"	D	2.83	27.44	19.29	35.19	2380
42'-7"	E	0.47	32.16	19.29	35.19	2560
59'-0"	F	- 2.48	38.07	19.29	35.19	2730
82'-0"	G	11.88	45.55	55.51	66.53	3280
109'-10"	H	6.96	55.39	55.51	66.53	3480
150'-11"	J	0.07	69.17	55.51	66.53	3750

Note:
Weight calculated with P5.

Note:
*) Gear brake as standard brake for drum lengths H and J

This document is the absolute property of R&M Materials Handling, Inc. This document must not be copied without the written permission of R&M Materials Handling, Inc. The contents thereof must not be disclosed to a third party nor be used for any unauthorized purpose. Contravention will be prosecuted.

ETTVPH Design	ETTVPH Clud	Appd	Ref Drawing	QC-N-22
2005-08-24 Date	TROLLEY; NORMAL HEADROOM CURVED TRACK, 2x2 ROPE FALLS			1 of 3 P01.doc
SLEQDOCV Drawn Dept	R&M R&M MATERIALS HANDLING, INC. STEEL & CONCRETE PRODUCTS CHICAGO, ILL.			Issue 1
D004206-A				