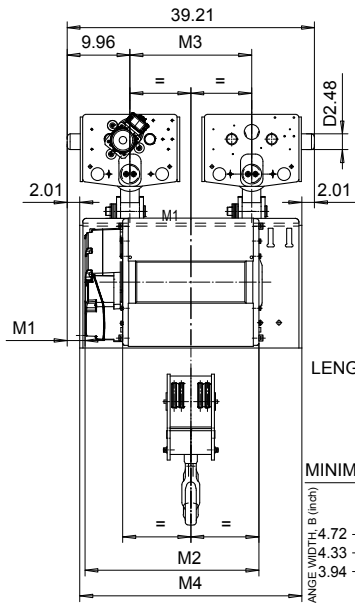


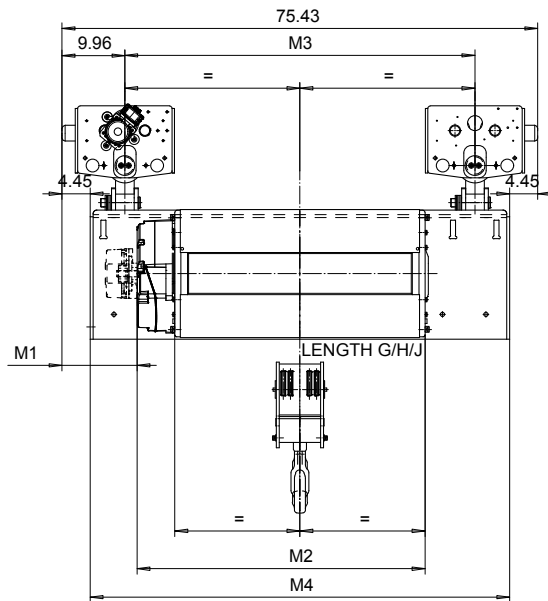
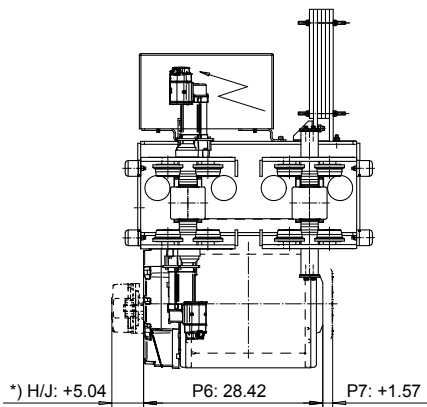
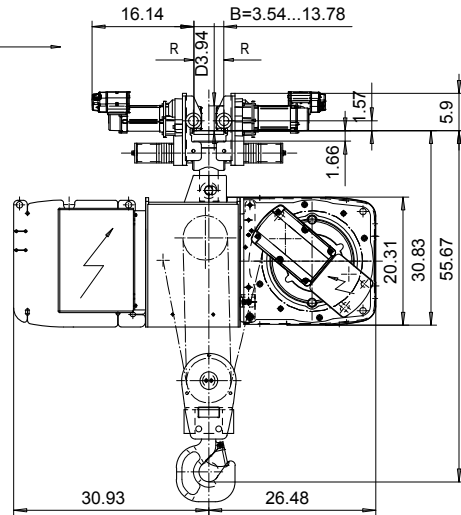
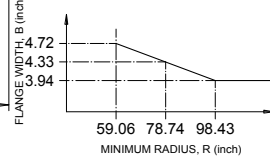
**NORMAL HEADROOM, CURVED TRACK, 4 PART DOUBLE**  
 Hoist type:  
 SX5042...N0

US-60Hz



LENGTH D/E/F

MINIMUM RADIUS CURVE CHART



Load (TON)	Class ASME	Hoisting speed (ft/min)			
		Gear+Motor code:			
		E+P5	F+P5	H+P6	J+P7
6	H4+	16/2.4	20/3.1	30/4.9	40/6.7
7 1/2	H4+	16/2.4	20/3.1	30/4.9	40/6.7
10	H4	16/2.4	20/3.1	30/4.9	40/6.7
+ weight (lb):		-	-	120	160

HOL (ft)	Length code	M1 (inch)	M2 (inch)	M3 (inch)	M4 (inch)	Weight (lb)
13'-1"	D	2.83	27.44	19.29	35.19	2340
21'-4"	E	0.47	32.16	19.29	35.19	2510
29'-6"	F	-2.48	38.07	19.29	35.19	2690
41'-0"	G	11.88	45.55	55.51	66.53	3220
54'-1"	H	6.96	55.39	55.51	66.53	3440
75'-5"	J	0.07	69.17	55.51	66.53	3840

Note:  
Weight calculated with P5.

Note:  
\*) Gear brake as standard brake for drum lengths H and J

This document is the absolute property of R&M Materials Handling, Inc. This document must not be copied without the written permission of R&M Materials Handling, Inc. The contents thereof must not be disclosed to a third party nor be used for any unauthorized purpose. Contravention will be prosecuted.

ETVPH Design 2005-08-24 Date	ETVPH Chd Appd	Ref Drawing	QC-N-24
SLEQDOCV Owner Dept	TROLLEY; NORMAL HEADROOM CURVED TRACK, 2x4 ROPE FALLS		1 of 15 Folder
R&M R&M MATERIALS HANDLING, INC. HOIST & CRANE PRODUCTS SHEPHERDVILLE, OHIO	D004207-A		Issue 1