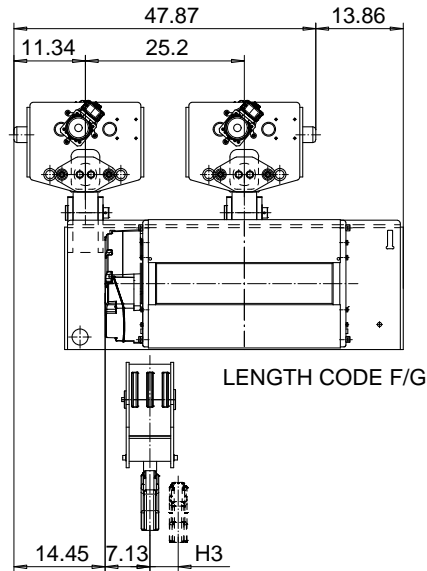
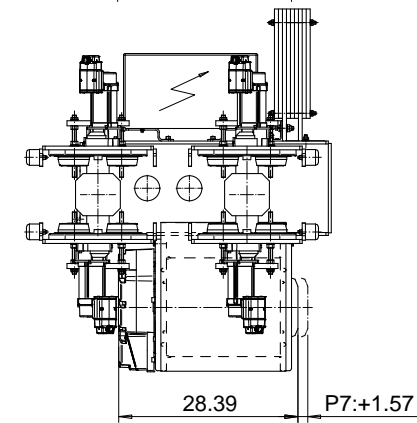
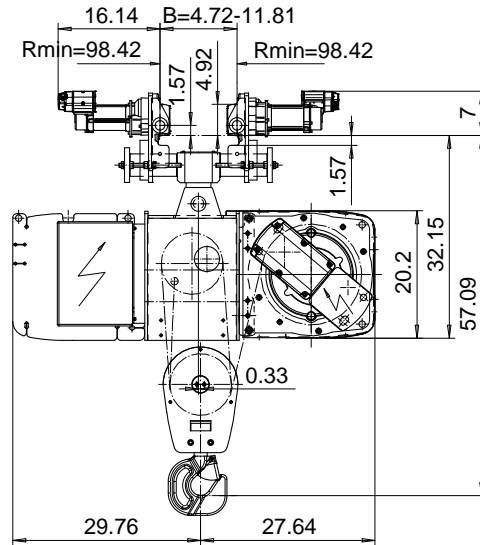
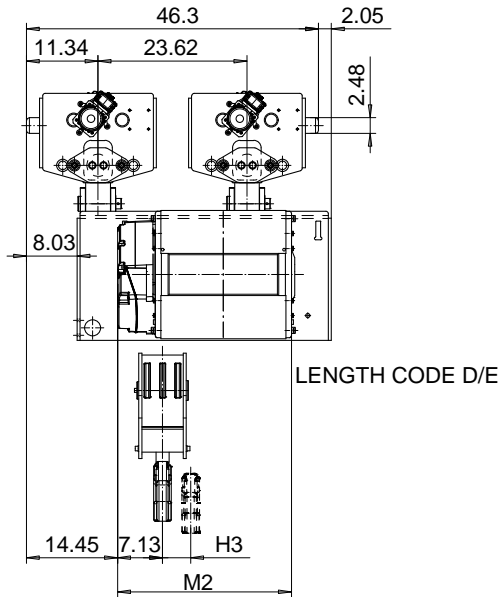


NORMAL HEADROOM, CURVED TRACK, 6 PART SINGLE

Hoist type:

US-60Hz

SX5 061...N0



Load (TON)	Class ASME	Hoisting speed (ft/min)		
		Gear+Motor code:		
		F+P5	H+P6	J+P7
12	H4+	12.5/1.9	20/3.1	25/3.9
15	H4	12.5/1.9	20/3.1	25/3.9
+ weight (lb):		-	120	160

HOL (ft)	Length code	M2 (inch)	H3 (inch)	Weight (lb)
19'-8"	D	26.85	2.08	2500
26'-2"	E	31.57	3.07	2600
32'-9"	F	37.48	3.85	2740
42'-7"	G	44.96	5.19	2900

This document is the absolute property of R&M Materials Handling, Inc. This document must not be copied without the written permission of R&M Materials Handling, Inc. The contents thereof must not be disclosed to a third party nor be used for any unauthorized purpose. Contravention will be prosecuted.

ETVPH Design	ETVPH Chd	Appd	Ref Drawing	QC-N-06
2005-08-26 Date	TROLLEY; NORMAL HEADROOM			1 of 13 Folder
SLEQDOCV Owner Dept	CURVED TRACK, 6 ROPE FALLS			
R&M MATERIALS HANDLING, INC. STEEL & CRANE PRODUCTS SHEWAN, WATSON & CO.	D004208-A			Issue 1