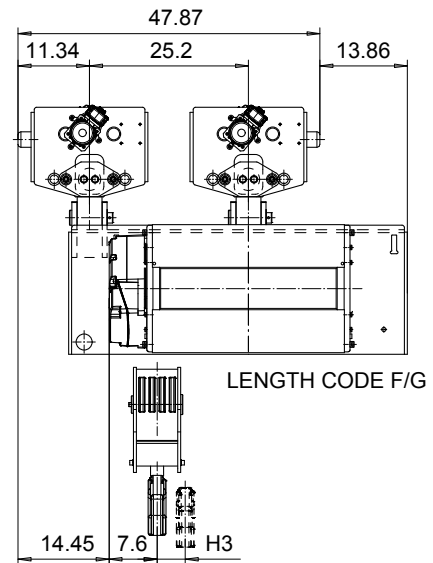
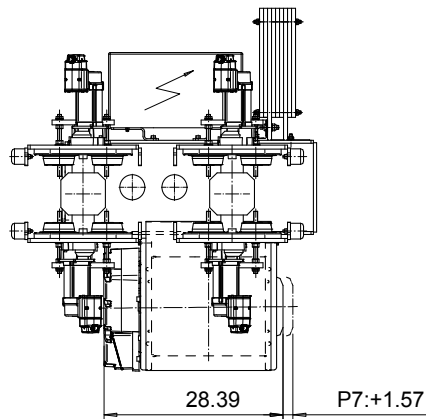
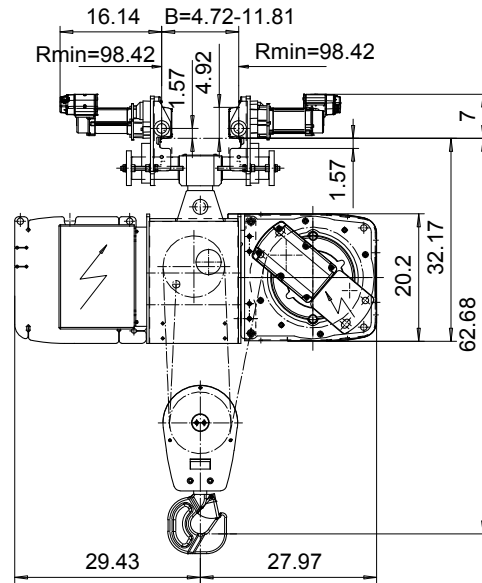
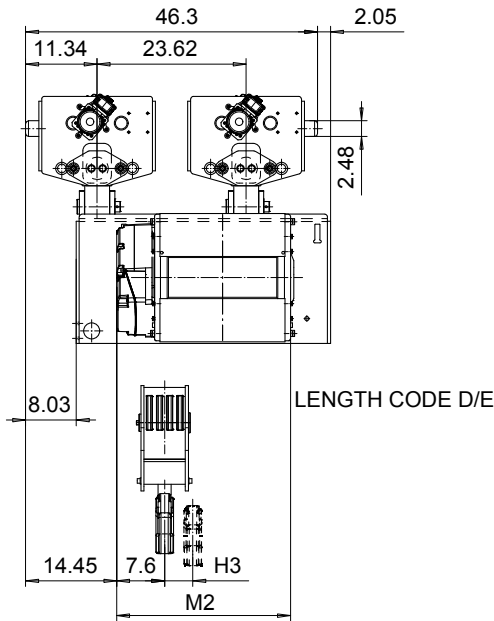


NORMAL HEADROOM, CURVED TRACK, 8 PART SINGLE

Hoist type:

SX5 081...N0

US-60Hz



Load (TON)	Class ASME	Hoisting speed (ft/min)		
		Gear+Motor code:		
		F+P5	H+P6	J+P7
15	H4	10/1.5	16/2.4	20/3.1
20	H3	10/1.5	16/2.4	20/3.1
+ weight (lb):		-	120	160

HOL (ft)	Length code	M2 (inch)	H3 (inch)	Weight (lb)
14'-9"	D	26.85	1.73	2540
19'-8"	E	31.57	2.08	2640
26'-2"	F	37.48	2.99	2780
32'-9"	G	44.96	3.85	2940

This document is the absolute property of R&M Materials Handling, Inc. This document must not be copied without the written permission of R&M Materials Handling, Inc. The contents thereof must not be disclosed to a third party nor be used for any unauthorized purpose. Contravention will be prosecuted.

ETVPH Design	ETVPH Chd	Appd	Ref Drawing	QC-N-08
2005-08-26 Date	TROLLEY; NORMAL HEADROOM			1 of 15 Folder
SLEQDCV Owner Dept	CURVED TRACK, 8 ROPE FALLS			
R&M MATERIALS HANDLING, INC. HOIST & CRANE PRODUCTS BROOKFIELD, OHIO	D004209-A			Issue 1