

Sales Policy

QX / QL Crane Components

March 2, 2009

SALES POLICY

Terms and Conditions of Sale

All sales are subject to the R&M Materials Handling, Inc. Standard Terms and Conditions of Sale (Revision 101707), a copy of which is available at www.rmhoist.com or upon request from your R&M Materials Handling, Inc. customer service/sales representatives and the terms of which are incorporated as if fully rewritten herein.

Currency: USD

R&M Materials Handling, Inc.
4501 Gateway Blvd.
Springfield, OH 45502



www.rmhoist.com

List prices FOB factory, Springfield, Ohio,
subject to change without notice.

Phone: 937-328-5100 Fax: 937-325-5319

This page intentionally left blank.

Currency: USD
Units: METRIC
Frequency: 50 Hz

QX / QL Crane Components

March 2, 2009

QX Crane Components for Spacemaster® SX electric wire rope hoists

QL Crane Components for LoadMate® electric chain hoists

| Table of Contents | |
|--|----------|
| Description | Page No. |
| Under Running End Truck Pricing | 1 |
| Top Running End Truck Pricing | 6 |
| End Truck Joint Plate Pricing | 11 |
| End Truck Bumper Pricing | 13 |
| Bridge Drive Pricing | 14 |
| QX Bridge Panel Pricing | 17 |
| QL Bridge Panel Pricing | 21 |
| Bridge Inverter Pricing | 22 |
| Pushbutton Pendant Pricing | 23 |
| RaCon Series II Radio Control System Pricing | 24 |
| RaCon Radio Control System Pricing | 25 |
| Crane Component Options Pricing | 26 |
| Spare Parts Packages Pricing | 29 |

Note: Festoon package selection and pricing is available through R&M's **QuoteMaster®** program.

R&M Materials Handling, Inc.
4501 Gateway Blvd.
Springfield, OH 45502



www.rmhoist.com

List prices FOB factory, Springfield, Ohio,
subject to change without notice.

Phone: 937-328-5100 Fax: 937-325-5319

Currency: USD
 Units: METRIC
 Frequency: 50 Hz

QX/QL Crane Components
 UNDER RUNNING END TRUCK PRICING

Page 1
 March 2, 2009

| Type | Runway Beam Flange Width Range (mm) | Whl. Dia. (mm) | Wheel Base (mm) | Approx. weight/trk. (kg) | Max. Static Corner Load (kN) | List Price per End Truck | Lead Time (weeks) |
|---------|-------------------------------------|----------------|-----------------|--------------------------|------------------------------|--------------------------|-------------------|
| RU08-12 | 73 - 120 | 80 | 1200 | 110 | 25 | 1428 | 8-10 |
| | 121 - 168 | | | | | | |
| | 169 - 216 | | | | | | |
| | 217 - 264 | | | | | | |
| | 265 - 313 | | | | | | |
| RU08-14 | 73 - 120 | 80 | 1400 | 117 | 25 | 1470 | 8-10 |
| | 121 - 168 | | | | | | |
| | 169 - 216 | | | | | | |
| | 217 - 264 | | | | | | |
| | 265 - 313 | | | | | | |
| RU08-18 | 73 - 120 | 80 | 1800 | 131 | 25 | 1512 | 2-4 |
| | 121 - 168 | | | | | | |
| | 169 - 216 | | | | | | |
| | 217 - 264 | | | | | | |
| | 265 - 313 | | | | | | |
| RU08-23 | 73 - 120 | 80 | 2300 | 148 | 23 | 1596 | 2-4 |
| | 121 - 168 | | | | | | |
| | 169 - 216 | | | | | | |
| | 217 - 264 | | | | | | |
| | 265 - 313 | | | | | | |

Note: Maximum Static Corner Load is based on Fem 2m duty at 32 m/min.

RU/RH/UT style end truck is a 8-wheel end truck - see outline drawing.

Specify the flange width of the runway beam when ordering under running end trucks

Drives, joint plates, and bumpers are sold separately.

| End Truck | Suitable Bridge Drive |
|------------------|-----------------------|
| UT16 | DS3, DS4 |
| RU08, RU10, RH10 | GEK |



R&M Materials Handling, Inc.
 4501 Gateway Blvd.
 Springfield, OH 45502

www.rmhoist.com

List prices FOB factory, Springfield, Ohio,
 subject to change without notice.

Phone: 937-328-5100 Fax: 937-325-5319

Currency: USD
 Units: METRIC
 Frequency: 50 Hz

QX/QL Crane Components
 UNDER RUNNING END TRUCK PRICING

Page 2
 March 2, 2009

| Type | Runway Beam Flange Width Range (mm) | Whl. Dia. (mm) | Wheel Base (mm) | Approx. weight/trk. (kg) | Max. Static Corner Load (kN) | List Price per End Truck | Lead Time (weeks) |
|---------|-------------------------------------|----------------|-----------------|--------------------------|------------------------------|--------------------------|-------------------|
| RU08-28 | 73 - 120 | 80 | 2800 | 165 | 20 | 1680 | 8-10 |
| | 121 - 168 | | | | | | |
| | 169 - 216 | | | | | | |
| | 217 - 264 | | | | | | |
| | 265 - 313 | | | | | | |
| RU10-12 | 82 - 130 | 100 | 1200 | 161 | 46 | 1853 | 8-10 |
| | 131 - 178 | | | | | | |
| | 179 - 226 | | | | | | |
| | 227 - 274 | | | | | | |
| | 275 - 322 | | | | | | |
| RU10-14 | 82 - 130 | 100 | 1400 | 171 | 46 | 1901 | 8-10 |
| | 131 - 178 | | | | | | |
| | 179 - 226 | | | | | | |
| | 227 - 274 | | | | | | |
| | 275 - 322 | | | | | | |
| RU10-18 | 82 - 130 | 100 | 1800 | 191 | 46 | 1939 | 2-4 |
| | 131 - 178 | | | | | | |
| | 179 - 226 | | | | | | |
| | 227 - 274 | | | | | | |
| | 275 - 322 | | | | | | |

Note: Maximum Static Corner Load is based on Fem 2m duty at 32 m/min.

RU/RH/UT style end truck is a 8-wheel end truck - see outline drawing.

Specify the flange width of the runway beam when ordering under running end trucks

Drives, joint plates, and bumpers are sold separately.

| End Truck | Suitable Bridge Drive |
|------------------|-----------------------|
| UT16 | DS3, DS4 |
| RU08, RU10, RH10 | GEK |



R&M Materials Handling, Inc.
 4501 Gateway Blvd.
 Springfield, OH 45502

www.rmhoist.com

List prices FOB factory, Springfield, Ohio,
 subject to change without notice.

Phone: 937-328-5100 Fax: 937-325-5319

Currency: USD
 Units: METRIC
 Frequency: 50 Hz

QX/QL Crane Components
 UNDER RUNNING END TRUCK PRICING

Page 3
 March 2, 2009

| Type | Runway Beam Flange Width Range (mm) | Whl. Dia. (mm) | Wheel Base (mm) | Approx. weight/trk. (kg) | Max. Static Corner Load (kN) | List Price per End Truck | Lead Time (weeks) |
|---------|-------------------------------------|----------------|-----------------|--------------------------|------------------------------|--------------------------|-------------------|
| RU10-23 | 82 - 130 | 100 | 2300 | 217 | 46 | 1978 | 2-4 |
| | 131 - 178 | | | | | | |
| | 179 - 226 | | | | | | |
| | 227 - 274 | | | | | | |
| | 275 - 322 | | | | | | |
| RU10-28 | 82 - 130 | 100 | 2800 | 275 | 46 | 2027 | 2-4 |
| | 131 - 178 | | | | | | |
| | 179 - 226 | | | | | | |
| | 227 - 274 | | | | | | |
| | 275 - 322 | | | | | | |
| RU10-32 | 82 - 130 | 100 | 3200 | 299 | 44 | 2070 | 8-10 |
| | 131 - 178 | | | | | | |
| | 179 - 226 | | | | | | |
| | 227 - 274 | | | | | | |
| | 275 - 322 | | | | | | |
| RU10-35 | 82 - 130 | 100 | 3500 | 318 | 40 | 2108 | 8-10 |
| | 131 - 178 | | | | | | |
| | 179 - 226 | | | | | | |
| | 227 - 274 | | | | | | |
| | 275 - 322 | | | | | | |

Note: Maximum Static Corner Load is based on Fem 2m duty at 32 m/min.

RU/RH/UT style end truck is a 8-wheel end truck - see outline drawing.

Specify the flange width of the runway beam when ordering under running end trucks

Drives, joint plates, and bumpers are sold separately.

| End Truck | Suitable Bridge Drive |
|------------------|-----------------------|
| UT16 | DS3, DS4 |
| RU08, RU10, RH10 | GEK |



R&M Materials Handling, Inc.
 4501 Gateway Blvd.
 Springfield, OH 45502

www.rmhoist.com

List prices FOB factory, Springfield, Ohio,
 subject to change without notice.

Phone: 937-328-5100 Fax: 937-325-5319

Currency: USD
 Units: METRIC
 Frequency: 50 Hz

QX/QL Crane Components

UNDER RUNNING END TRUCK PRICING

Page 4
 March 2, 2009

| Type | Runway Beam Flange Width Range (mm) | Whl. Dia. (mm) | Wheel Base (mm) | Approx. weight/trk. (kg) | Max. Static Corner Load (kN) | List Price per End Truck | Lead Time (weeks) |
|---------|-------------------------------------|----------------|-----------------|--------------------------|------------------------------|--------------------------|-------------------|
| RH10-14 | 82 - 130 | 100 | 1400 | 285 | 46 | 2694 | 8-10 |
| | 131 - 178 | | | | | | |
| | 179 - 226 | | | | | | |
| | 227 - 274 | | | | | | |
| | 275 - 322 | | | | | | |
| RH10-18 | 82 - 130 | 100 | 1800 | 305 | 46 | 2729 | 8-10 |
| | 131 - 178 | | | | | | |
| | 179 - 226 | | | | | | |
| | 227 - 274 | | | | | | |
| | 275 - 322 | | | | | | |
| RH10-23 | 82 - 130 | 100 | 2300 | 330 | 46 | 2773 | 8-10 |
| | 131 - 178 | | | | | | |
| | 179 - 226 | | | | | | |
| | 227 - 274 | | | | | | |
| | 275 - 322 | | | | | | |
| RH10-28 | 82 - 130 | 100 | 2800 | 370 | 46 | 2816 | 8-10 |
| | 131 - 178 | | | | | | |
| | 179 - 226 | | | | | | |
| | 227 - 274 | | | | | | |
| | 275 - 322 | | | | | | |

Note: Maximum Static Corner Load is based on Fem 2m duty at 32 m/min.

RU/RH/UT style end truck is a 8-wheel end truck - see outline drawing.

Specify the flange width of the runway beam when ordering under running end trucks

Drives, joint plates, and bumpers are sold separately.

| End Truck | Suitable Bridge Drive |
|------------------|-----------------------|
| UT16 | DS3, DS4 |
| RU08, RU10, RH10 | GEK |



R&M Materials Handling, Inc.
 4501 Gateway Blvd.
 Springfield, OH 45502

www.rmhoist.com

List prices FOB factory, Springfield, Ohio,
 subject to change without notice.

Phone: 937-328-5100 Fax: 937-325-5319

Currency: USD
 Units: METRIC
 Frequency: 50 Hz

QX/QL Crane Components
 UNDER RUNNING END TRUCK PRICING

Page 5
 March 2, 2009

| Type | Runway Beam Flange Width Range (mm) | Whl. Dia. (mm) | Wheel Base (mm) | Approx. weight/trk. (kg) | Max. Static Corner Load (kN) | List Price per End Truck | Lead Time (weeks) |
|---------|-------------------------------------|----------------|-----------------|--------------------------|------------------------------|--------------------------|-------------------|
| UT16-12 | 99 - 200 | 160 | 1200 | 370 | 70 | 3842 | 8-10 |
| UT16-12 | 200 - 331 | 160 | 1200 | 380 | 70 | 3842 | 8-10 |
| UT16-14 | 99 - 200 | 160 | 1400 | 405 | 70 | 3899 | 8-10 |
| UT16-14 | 200 - 331 | 160 | 1400 | 415 | 70 | 3899 | 8-10 |
| UT16-18 | 99 - 200 | 160 | 1800 | 440 | 70 | 4037 | 8-10 |
| UT16-18 | 200 - 331 | 160 | 1800 | 450 | 70 | 4037 | 8-10 |
| UT16-22 | 99 - 200 | 160 | 2200 | 480 | 70 | 4143 | 2-4 |
| UT16-22 | 200 - 331 | 160 | 2200 | 490 | 70 | 4143 | 2-4 |
| UT16-28 | 99 - 200 | 160 | 2800 | 540 | 70 | 4354 | 8-10 |
| UT16-28 | 200 - 331 | 160 | 2800 | 550 | 70 | 4354 | 8-10 |

Note: Maximum Static Corner Load is based on Fem 2m duty at 32 m/min.
 RU/RH/UT style end truck is a 8-wheel end truck - see outline drawing.
 Specify the flange width of the runway beam when ordering under running end trucks
 Drives, joint plates, and bumpers are sold separately.

| End Truck | Suitable Bridge Drive |
|------------------|-----------------------|
| UT16 | DS3, DS4 |
| RU08, RU10, RH10 | GEK |

R&M Materials Handling, Inc.
 4501 Gateway Blvd.
 Springfield, OH 45502



www.rmhoist.com

List prices FOB factory, Springfield, Ohio,
 subject to change without notice.
 Phone: 937-328-5100 Fax: 937-325-5319

Currency: USD
 Units: METRIC
 Frequency: 50 Hz

QX/QL Crane Components

Page 6
 March 2, 2009

TOP RUNNING END TRUCK PRICING

| Type | Wheel Tread Width Range (mm) | Whl. Dia. (mm) | Wheel Base (mm) | Approx. weight/trk. (kg) | List Price per End Truck | Lead Time (weeks) | |
|----------|------------------------------|----------------|-----------------|--------------------------|--------------------------|-------------------|------|
| | | | | | | S.G. | D.G. |
| RTL09-13 | 50 - 70 | 90 | 1250 | 53 | 584 | 8-10 | NA |
| RTL09-16 | 50 - 70 | 90 | 1600 | 67 | 649 | 8-10 | 8-10 |
| RTL09-20 | 50 - 70 | 90 | 2000 | 75 | 735 | 8-10 | 8-10 |
| RTN09-13 | 50 - 70 | 90 | 1250 | 78 | 840 | 8-10 | NA |
| RTN09-16 | 50 - 70 | 90 | 1600 | 100 | 916 | 2-4 | 2-4 |
| RTN09-20 | 50 - 70 | 90 | 2000 | 114 | 993 | 2-4 | 2-4 |
| RTN09-25 | 50 - 70 | 90 | 2500 | 133 | 1069 | 2-4 | 2-4 |
| RTN11-16 | 52 - 87 | 110 | 1600 | 127 | 1070 | 2-4 | 2-4 |
| RTN11-20 | 52 - 87 | 110 | 2000 | 146 | 1130 | 2-4 | 2-4 |
| RTN11-25 | 52 - 87 | 110 | 2500 | 169 | 1200 | 2-4 | 2-4 |
| RTN11-32 | 52 - 87 | 110 | 3200 | 199 | 1298 | 2-4 | 2-4 |

See outline drawing for wheel load information or use R&M's **QuoteMaster**® program.

Drives, joint plates, and bumpers are sold separately.

Bogie end truck weight and price is for two end trucks plus connector.

| End Truck | Suitable Bridge Drive |
|---|-----------------------|
| RSN09, RSN11, RTL09, RTN09, RTN11, RT14 | GES3 |
| RT20 | GES3, GES4 |
| RT25, RT32 | GES4, GES5 |
| RT50 | GES5 |



R&M Materials Handling, Inc.
 4501 Gateway Blvd.
 Springfield, OH 45502

www.rmhoist.com

List prices FOB factory, Springfield, Ohio,
 subject to change without notice.

Phone: 937-328-5100 Fax: 937-325-5319

Currency: USD
 Units: METRIC
 Frequency: 50 Hz

QX/QL Crane Components

Page 7
 March 2, 2009

TOP RUNNING END TRUCK PRICING

| Type | Wheel Tread Width Range (mm) | Whl. Dia. (mm) | Wheel Base (mm) | Approx. weight/trk. (kg) | List Price per End Truck | Lead Time (weeks) | |
|----------|------------------------------|----------------|-----------------|--------------------------|--------------------------|-------------------|------|
| | | | | | | S.G. | D.G. |
| RT14-14 | 50 - 75 | 140 | 1400 | 193 | 1015 | 8-10 | 8-10 |
| RT14-18 | 50 - 75 | 140 | 1800 | 217 | 1070 | 8-10 | 8-10 |
| RT14-22 | 50 - 75 | 140 | 2200 | 239 | 1137 | 2-4 | 2-4 |
| RT14-27 | 50 - 75 | 140 | 2700 | 268 | 1205 | 2-4 | 8-10 |
| RT14-31 | 50 - 75 | 140 | 3100 | 290 | 1286 | 8-10 | 8-10 |
| RT14-38 | 50 - 75 | 140 | 3800 | 330 | 1367 | 8-10 | 8-10 |
| RT20-18 | 55 - 100 | 200 | 1800 | 231 | 1733 | 8-10 | 8-10 |
| RT20-22 | 55 - 100 | 200 | 2200 | 260 | 1814 | 2-4 | 8-10 |
| RT20-27 | 55 - 100 | 200 | 2700 | 297 | 1909 | 2-4 | 2-4 |
| RT20-31 | 55 - 100 | 200 | 3100 | 326 | 2058 | 2-4 | 2-4 |
| RT20-38 | 55 - 100 | 200 | 3800 | 377 | 2159 | 8-10 | 8-10 |
| RT20B-12 | 55 - 100 | 200 | 1200 | 416 | 3669 | NA | 2-4 |
| RT20B-14 | 55 - 100 | 200 | 1400 | 444 | 3845 | NA | 8-10 |
| RT20B-16 | 55 - 100 | 200 | 1600 | 474 | 3947 | NA | 8-10 |
| RT20B-18 | 55 - 100 | 200 | 1800 | 502 | 4156 | NA | 8-10 |
| RT20B-20 | 55 - 100 | 200 | 2000 | 560 | 4332 | NA | 8-10 |

See outline drawing for wheel load information or use R&M's **QuoteMaster**[®] program.

Drives, joint plates, and bumpers are sold separately.

Bogie end truck weight and price is for two end trucks plus connector.

| End Truck | Suitable Bridge Drive |
|---|-----------------------|
| RSN09, RSN11, RTL09, RTN09, RTN11, RT14 | GES3 |
| RT20 | GES3, GES4 |
| RT25, RT32 | GES4, GES5 |
| RT50 | GES5 |



R&M Materials Handling, Inc.
 4501 Gateway Blvd.
 Springfield, OH 45502

www.rmhoist.com

List prices FOB factory, Springfield, Ohio,
 subject to change without notice.

Phone: 937-328-5100 Fax: 937-325-5319

Currency: USD
 Units: METRIC
 Frequency: 50 Hz

QX/QL Crane Components

Page 8
 March 2, 2009

TOP RUNNING END TRUCK PRICING

| Type | Wheel Tread Width Range (mm) | Whl. Dia. (mm) | Wheel Base (mm) | Approx. weight/trk. (kg) | List Price per End Truck | Lead Time (weeks) | |
|----------|------------------------------|----------------|-----------------|--------------------------|--------------------------|-------------------|------|
| | | | | | | S.G. | D.G. |
| RT25-22 | 55 - 100 | 250 | 2200 | 376 | 2572 | 8-10 | 8-10 |
| RT25-27 | 55 - 100 | 250 | 2700 | 426 | 2816 | 2-4 | 8-10 |
| RT25-31 | 55 - 100 | 250 | 3100 | 493 | 3060 | 8-10 | 2-4 |
| RT25-38 | 55 - 100 | 250 | 3800 | 641 | 3263 | 8-10 | 8-10 |
| RT25-45 | 55 - 100 | 250 | 4500 | 681 | 3507 | 8-10 | 8-10 |
| RT25-50 | 55 - 100 | 250 | 5000 | 739 | 3831 | 8-10 | 8-10 |
| RT25-55 | 55 - 100 | 250 | 5500 | 796 | 4211 | 8-10 | 8-10 |
| RT25B-14 | 55 - 100 | 250 | 1400 | 637 | 6404 | NA | 8-10 |
| RT25B-16 | 55 - 100 | 250 | 1600 | 677 | 6722 | NA | 8-10 |
| RT25B-18 | 55 - 100 | 250 | 1800 | 717 | 7020 | NA | 8-10 |
| RT25B-20 | 55 - 100 | 250 | 2000 | 759 | 7338 | NA | 8-10 |
| RT32-22 | 55 - 100 | 320 | 2200 | 488 | 3980 | 8-10 | 8-10 |
| RT32-27 | 55 - 100 | 320 | 2700 | 544 | 4170 | 8-10 | 8-10 |
| RT32-31 | 55 - 100 | 320 | 3100 | 596 | 4319 | 8-10 | 2-4 |
| RT32-38 | 55 - 100 | 320 | 3800 | 733 | 4617 | 8-10 | 8-10 |
| RT32-45 | 55 - 100 | 320 | 4500 | 765 | 4752 | 8-10 | 8-10 |
| RT32-50 | 55 - 100 | 320 | 5000 | 920 | 5348 | 8-10 | 8-10 |
| RT32-55 | 55 - 100 | 320 | 5500 | 986 | 5767 | 8-10 | 8-10 |

See outline drawing for wheel load information or use R&M's **QuoteMaster**® program.

Drives, joint plates, and bumpers are sold separately.

Bogie end truck weight and price is for two end trucks plus connector.

| End Truck | Suitable Bridge Drive |
|---|-----------------------|
| RSN09, RSN11, RTL09, RTN09, RTN11, RT14 | GES3 |
| RT20 | GES3, GES4 |
| RT25, RT32 | GES4, GES5 |
| RT50 | GES5 |



R&M Materials Handling, Inc.
 4501 Gateway Blvd.
 Springfield, OH 45502

www.rmhoist.com

List prices FOB factory, Springfield, Ohio,
 subject to change without notice.

Phone: 937-328-5100 Fax: 937-325-5319

Currency: USD
 Units: METRIC
 Frequency: 50 Hz

QX/QL Crane Components

Page 9
 March 2, 2009

TOP RUNNING END TRUCK PRICING

| Type | Wheel Tread Width Range (mm) | Whl. Dia. (mm) | Wheel Base (mm) | Approx. weight/trk. (kg) | List Price per End Truck | Lead Time (weeks) | |
|----------|------------------------------|----------------|-----------------|--------------------------|--------------------------|-------------------|------|
| | | | | | | S.G. | D.G. |
| RT32B-14 | 55 - 100 | 320 | 1400 | 829 | 9071 | NA | 8-10 |
| RT32B-16 | 55 - 100 | 320 | 1600 | 883 | 9511 | NA | 8-10 |
| RT32B-18 | 55 - 100 | 320 | 1800 | 935 | 9937 | NA | 8-10 |
| RT32B-20 | 55 - 100 | 320 | 2000 | 989 | 10411 | NA | 8-10 |
| RT50-22 | 55 - 100 | 500 | 2200 | 790 | 6052 | 8-10 | 8-10 |
| RT50-27 | 55 - 100 | 500 | 2700 | 900 | 6512 | 8-10 | 8-10 |
| RT50-31 | 55 - 100 | 500 | 3100 | 960 | 6810 | 8-10 | 8-10 |
| RT50-38 | 55 - 100 | 500 | 3800 | 1140 | 7284 | 8-10 | 8-10 |
| RT50-45 | 55 - 100 | 500 | 4500 | 1320 | 7744 | 8-10 | 8-10 |
| RT50-50 | 55 - 100 | 500 | 5000 | 1490 | 8245 | 8-10 | 8-10 |
| RT50-55 | 55 - 100 | 500 | 5500 | 1590 | 8556 | 8-10 | 8-10 |
| RT50B-16 | 55 - 100 | 500 | 1600 | 898 | 12104 | NA | 8-10 |
| RT50B-18 | 55 - 100 | 500 | 1800 | 978 | 12618 | NA | 8-10 |
| RT50B-20 | 55 - 100 | 500 | 2000 | 1058 | 13187 | NA | 8-10 |

See outline drawing for wheel load information or use R&M's **QuoteMaster**® program.

Drives, joint plates, and bumpers are sold separately.

Bogie end truck weight and price is for two end trucks plus connector.

| End Truck | Suitable Bridge Drive |
|---|-----------------------|
| RSN09, RSN11, RTL09, RTN09, RTN11, RT14 | GES3 |
| RT20 | GES3, GES4 |
| RT25, RT32 | GES4, GES5 |
| RT50 | GES5 |



R&M Materials Handling, Inc.
 4501 Gateway Blvd.
 Springfield, OH 45502

www.rmhoist.com

List prices FOB factory, Springfield, Ohio,
 subject to change without notice.

Phone: 937-328-5100 Fax: 937-325-5319

Currency: USD
 Units: METRIC
 Frequency: 50 Hz

QX/QL Crane Components

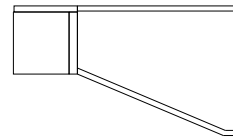
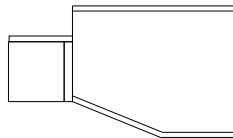
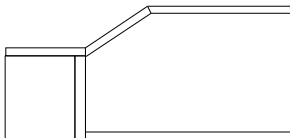
Page 10
 March 2, 2009

TOP RUNNING END TRUCK PRICING

| Type | Wheel Tread Width Range (mm) | Whl. Dia. (mm) | Wheel Base (mm) | Approx. weight/trk. (kg) | List Price per End Truck | Lead Time (weeks) | |
|----------|------------------------------|----------------|-----------------|--------------------------|--------------------------|-------------------|------|
| | | | | | | S.G. | D.G. |
| RSN09-13 | 50 - 70 | 90 | 1250 | 86 | 916 | 8-10 | N.A. |
| RSN09-16 | 50 - 70 | 90 | 1600 | 116 | 993 | 8-10 | 8-10 |
| RSN09-20 | 50 - 70 | 90 | 2000 | 130 | 1069 | 8-10 | 8-10 |
| RSN09-25 | 50 - 70 | 90 | 2500 | 149 | 1184 | 8-10 | 8-10 |
| RSN11-16 | 52 - 87 | 110 | 1600 | 179 | 1070 | 8-10 | 8-10 |
| RSN11-20 | 52 - 87 | 110 | 2000 | 202 | 1139 | 8-10 | 8-10 |
| RSN11-25 | 52 - 87 | 110 | 2500 | 230 | 1223 | 8-10 | 8-10 |
| RSN11-32 | 52 - 87 | 110 | 3200 | 267 | 1374 | 8-10 | 8-10 |

On the RSN end truck, the girder is joined to joint plate through a shear type connection.

Samples of a shear joint connection



See outline drawing for wheel load information or use R&M's **QuoteMaster**® program.

Drives, end truck joint plates, and bumpers must be added separately.

| End Truck | Suitable Bridge Drive |
|---|-----------------------|
| RSN09, RSN11, RTL09, RTN09, RTN11, RT14 | GES3 |
| RT20 | GES3, GES4 |
| RT25, RT32 | GES4, GES5 |
| RT50 | GES5 |

R&M Materials Handling, Inc.
 4501 Gateway Blvd.
 Springfield, OH 45502



www.rmhoist.com

List prices FOB factory, Springfield, Ohio,
 subject to change without notice.

Phone: 937-328-5100 Fax: 937-325-5319

Currency: USD
 Units: METRIC
 Frequency: 50 Hz

QX / QL Crane Components

Page 11
 March 2, 2009

END TRUCK JOINT PLATE PRICING

| Type | Possible Girder Connection Position | | Suitable for End Truck Type | Maximum Flange Width (mm) | List Price per End Truck | | Lead Time (weeks) |
|----------------------|-------------------------------------|-------|-----------------------------|---------------------------|--------------------------|------------|-------------------|
| | Profile | Box | | | S.G. | D.G. | |
| EBN09-400x200 | S;M;L | S;M;L | RSN09 | 400 | 153 | 298 | 8-10 |
| EBN11-400x255 | S;M;L | S;M;L | RSN11 | 400 | 191 | 390 | 8-10 |
| | | | | | | | |
| | | | | | | | |
| A3 | S;M | S;M | RTN09, RTL09 | 310 | 99 | 199 | 2-4 |
| A4 | S;M | S;M | RTN11 | 360 | 99 | 199 | 2-4 |
| A6 | S;M | S;M | RTN11 | 550 | 99 | 199 | 8-10 |
| | | | | | | | |
| | | | | | | | |
| K4 | S;M | S;M | RT25; RT32 | 410 | 373 | 745 | 8-10 |
| K5 | S;M | S;M | RT25; RT32; RT50 | 520 | 373 | 745 | 2-4 |
| K7 | S;M | S;M | RT32; RT50 | 740 | 373 | 745 | 8-10 |
| K9 | S;M | S;M | RT50 | 990 | 442 | 865 | 8-10 |
| | | | | | | | |
| L3 | S;M | S;M | RT20 | 300 | 230 | 461 | 2-4 |
| L4 | S;M | S;M | RT20 | 410 | 230 | 461 | 2-4 |
| L5 | S;M | S;M | RT20 | 520 | 230 | 461 | 2-4 |
| | | | | | | | |
| R3 | S;M;L | S;M;L | RT20 | 300 | 285 | 569 | 8-10 |
| R4 | S;M;L | S;M;L | RT20 | 410 | 285 | 569 | 2-4 |
| R5 | S;M;L | S;M;L | RT20 | 520 | 285 | 569 | 8-10 |

S = Standard connection
 M = Medium connection
 L = Low connection
 H = High connection
 S.G. = Single girder
 D.G. = Double girder

Above prices apply only when ordered with end truck.
 See End Truck Technical Guide for more information.
 XXX = User specified dimension (mm)



R&M Materials Handling, Inc.
 4501 Gateway Blvd.
 Springfield, OH 45502

www.rmhoist.com

List prices FOB factory, Springfield, Ohio,
 subject to change without notice.
 Phone: 937-328-5100 Fax: 937-325-5319

Currency: USD
Units: METRIC
Frequency: 50 Hz

QX / QL Crane Components

Page 12
March 2, 2009

END TRUCK JOINT PLATE PRICING

| Type | Possible Connection Position | | Suitable for End Truck Type | Maximum Flange Width (mm) | List Price per End Truck | | Lead Time (weeks) |
|---------------|------------------------------|-------|-----------------------------|---------------------------|--------------------------|------------|-------------------|
| | Profile | Box | | | S.G. | D.G. | |
| S4 | no | L | RT25; RT32 | 410 | 379 | 758 | 8-10 |
| S5 | no | L | RT25; RT32 | 520 | 379 | 758 | 8-10 |
| S6 | no | L | RT32; RT50 | 520 | 474 | 948 | 8-10 |
| S7 | no | L | RT32; RT50 | 740 | 474 | 948 | 8-10 |
| BA1 | S | no | RU08 | See Note | 92 | 191 | 2-4 |
| BA2 | S | no | RU08 | See Note | 92 | 191 | 2-4 |
| BA3 | S | no | RU08 | See Note | 92 | 191 | 2-4 |
| SA3 | S;M;H | S;M;H | RU08 | 300 | 92 | 191 | 8-10 |
| BB2 | S | no | RU10 | See Note | 92 | 191 | 2-4 |
| BB3 | S | no | RU10 | See Note | 92 | 191 | 2-4 |
| BB4 | S | no | RU10 | See Note | 92 | 191 | 2-4 |
| BB5 | S | no | RU10 | See Note | 92 | 191 | 2-4 |
| SB4 | S;M | S;M | RU10 | 410 | 92 | 191 | 8-10 |
| HB4(A) | S;M | S;M | RH10 | 410 | 109 | 217 | 8-10 |
| HB4(B) | S;M | S;M | RH10 | 410 | 109 | 217 | 8-10 |
| KB2 | S | no | RH10 | See Note | 94 | 217 | 8-10 |
| KB3 | S | no | RH10 | See Note | 94 | 195 | 8-10 |
| KB4 | S | no | RH10 | See Note | 94 | 195 | 8-10 |
| KB5 | S | no | RH10 | See Note | 94 | 195 | 8-10 |

Note: These are bolted connections without a joint plate. The different types define the bolt layout.

S = Standard connection
M = Medium connection
L = Low connection
H = High connection
S.G. = Single girder
D.G. = Double girder

Above prices apply only when ordered with end truck.
See End Truck Technical Guide for more information.
XXX = User specified dimension (mm)
Note: Bolted connection without a joint plate



R&M Materials Handling, Inc.
4501 Gateway Blvd.
Springfield, OH 45502

www.rmhoist.com

List prices FOB factory, Springfield, Ohio,
subject to change without notice.

Phone: 937-328-5100 Fax: 937-325-5319

Currency: USD
Units: METRIC
Frequency: 50 Hz

QX / QL Crane Components
END TRUCK BUMPER PRICING

Page 13
March 2, 2009

| Type | Code | Bumper Length (mm) | Bumper Diameter (mm) | List Price per End Truck | Lead Time (weeks) |
|------------|------|--------------------|----------------------|--------------------------|-------------------|
| D1801 | A | 53 | 63 | 32 | 2-4 |
| D2240 | B | 68 | 80 | 49 | 2-4 |
| D2241 | C | 85 | 100 | 81 | 2-4 |
| D2242 | D | 105 | 125 | 97 | 2-4 |
| PUR100*100 | G | 100 | 100 | 162 | 8-10 |
| PUR160*160 | H | 160 | 160 | 682 | 8-10 |
| PUR200*200 | I | 200 | 200 | 991 | 8-10 |
| PUR125*125 | M | 125 | 125 | 309 | 8-10 |
| PUR160*240 | P | 240 | 160 | 650 | 8-10 |
| PUR200*300 | S | 300 | 200 | 1430 | 8-10 |

Note: Above prices are valid only when purchased with the end truck.



R&M Materials Handling, Inc.
4501 Gateway Blvd.
Springfield, OH 45502

www.rmhoist.com

List prices FOB factory, Springfield, Ohio,
subject to change without notice.
Phone: 937-328-5100 Fax: 937-325-5319

Currency: USD
 Units: METRIC
 Frequency: 50 Hz

QX / QL Crane Components

Page 14
 March 2, 2009

BRIDGE DRIVE PRICING

| Type | Motor Code | Inverter Motor | Approx. weight/ drive (kg) | Motor kW | Synch motor speed (rpm) | Nominal motor current @ 400V | List Price | Lead Time (weeks) |
|------|------------|----------------|-------------------------------|-------------|-------------------------|------------------------------|-------------|-------------------|
| DS3 | MF06LA104 | | 20 | 0.55 / 0.12 | 3600/900 | 1.3 | 1254 | 2-4 |
| DS3 | MF06LA20P | x | 20 | 0.75 | 3600 | 2.1 | 1099 | 2-4 |
| DS3 | MF07LA104 | | 19 | 0.30 / 0.07 | 3600/900 | 1.3 | 1308 | 2-4 |
| DS3 | MF07LB104 | | 20 | 0.55 / 0.13 | 3600/900 | 1.6 | 1308 | 2-4 |
| DS3 | MF06LA100 | x | 20 | 0.65 | 4800 | 1.3 | 1099 | 2-4 |
| DS3 | MF06LA200 | x | 20 | 0.55 | 3600 | 1.8 | 1013 | 2-4 |
| DS3 | MF06MA100 | x | 20 | 0.45 | 4800 | 2.1 | 991 | 2-4 |
| DS3 | MF06MA200 | x | 20 | 0.37 | 3600 | 1.2 | 902 | 2-4 |
| DS3 | MF07LA100 | x | 19 | 0.30 | 3600 | 1.0 | 1110 | 2-4 |
| DS3 | MF07LA200 | x | 19 | 0.30 | 1800 | 1.0 | 1110 | 8-10 |
| DS3 | MF07LB100 | x | 20 | 0.55 | 3600 | 1.3 | 1164 | 2-4 |
| DS3 | MF07ZC100 | x | 22 | 0.90 | 3600 | 1.9 | 1386 | 8-10 |
| DS4 | MF06LA104 | | 20 | 0.55 / 0.12 | 3600/900 | 1.3 | 1760 | 2-4 |
| DS4 | MF06LA20P | x | 20 | 0.75 | 3600 | 2.1 | 1598 | 2-4 |
| DS4 | MF07ZC104 | | 22 | 0.75 / 0.18 | 3600/900 | 1.9 | 1719 | 8-10 |
| DS4 | MF06LA100 | x | 20 | 0.65 | 4800 | 2.1 | 1598 | 2-4 |
| DS4 | MF06LA200 | x | 20 | 0.55 | 3600 | 1.8 | 1598 | 2-4 |
| DS4 | MF06LB100 | x | 20 | 1.10 | 4800 | 2.9 | 1841 | 2-4 |
| DS4 | MF06LB200 | x | 20 | 1.10 | 3600 | 2.9 | 1801 | 2-4 |
| DS4 | MF06MA100 | x | 20 | 0.45 | 4800 | 2.1 | 1516 | 2-4 |
| DS4 | MF06MA200 | x | 20 | 0.37 | 3600 | 1.2 | 1422 | 2-4 |
| DS4 | MF07LB100 | x | 20 | 0.55 | 3600 | 1.3 | 1435 | 2-4 |
| DS4 | MF07LB200 | x | 20 | 0.55 | 1800 | 1.6 | 1435 | 2-4 |
| DS4 | MF07ZC100 | x | 22 | 0.90 | 3600 | 1.9 | 1652 | 2-4 |



R&M Materials Handling, Inc.
 4501 Gateway Blvd.
 Springfield, OH 45502

www.rmhoist.com

List prices FOB factory, Springfield, Ohio,
 subject to change without notice.

Phone: 937-328-5100 Fax: 937-325-5319

Currency: USD
 Units: METRIC
 Frequency: 50 Hz

QX / QL Crane Components

Page 15
 March 2, 2009

BRIDGE DRIVE PRICING

| Type | Motor Code | Inverter Motor | Approx. weight/ drive (kg) | Motor kW | Synch motor speed (rpm) | Nominal motor current @ 400V | List Price | Lead Time (weeks) |
|------|------------|----------------|-------------------------------|-------------|-------------------------|------------------------------|-------------|-------------------|
| GEK1 | MF06LA104 | | | 0.55 / 0.12 | 3600/900 | 1.3 | 956 | 8-10 |
| GEK1 | MF06LA20P | x | | 0.75 | 3600 | 2.1 | 801 | 8-10 |
| GEK1 | MF06MA104 | | | 0.37 / 0.07 | 3600 / 900 | 0.9 | 758 | 8-10 |
| GEK1 | MF06LA100 | x | | 0.65 | 4800 | 2.1 | 801 | 8-10 |
| GEK1 | MF06LA200 | x | | 0.55 | 3600 | 1.8 | 715 | 8-10 |
| GEK1 | MF06MA100 | x | | 0.45 | 4800 | 2.1 | 693 | 8-10 |
| GEK1 | MF06MA200 | x | | 0.37 | 3600 | 1.2 | 604 | 8-10 |
| GEK2 | MF06LA104 | | | 0.55 / 0.12 | 3600/900 | 1.3 | 1034 | 2-4 |
| GEK2 | MF06LA20P | x | | 0.75 | 3600 | 2.1 | 869 | 2-4 |
| GEK2 | MF06MA104 | | | 0.37 / 0.07 | 3600 / 900 | 0.9 | 826 | 2-4 |
| GEK2 | MF06LA100 | x | | 0.65 | 4800 | 2.1 | 869 | 2-4 |
| GEK2 | MF06LA200 | x | | 0.55 | 3600 | 1.8 | 780 | 2-4 |
| GEK2 | MF06MA100 | x | | 0.45 | 4800 | 2.1 | 755 | 2-4 |
| GEK2 | MF06MA200 | x | | 0.37 | 3600 | 1.2 | 663 | 2-4 |
| GES3 | MF06LA104 | | 20 | 0.55 / 0.12 | 3600 / 900 | 1.3 | 1254 | 2-4 |
| GES3 | MF06LA20P | x | 20 | 0.75 | 3600 | 2.1 | 1099 | 2-4 |
| GES3 | MF06MA104 | | 20 | 0.37 / 0.07 | 3600 / 900 | 0.9 | 1056 | 2-4 |
| GES3 | MF06LA100 | x | 20 | 0.65 | 4800 | 2.1 | 1099 | 2-4 |
| GES3 | MF06LA200 | x | 20 | 0.55 | 3600 | 1.8 | 1013 | 2-4 |
| GES3 | MF06MA100 | x | 20 | 0.45 | 4800 | 2.1 | 991 | 2-4 |
| GES3 | MF06MA200 | x | 20 | 0.37 | 3600 | 1.2 | 1013 | 2-4 |



R&M Materials Handling, Inc.
 4501 Gateway Blvd.
 Springfield, OH 45502

www.rmhoist.com

List prices FOB factory, Springfield, Ohio,
 subject to change without notice.
 Phone: 937-328-5100 Fax: 937-325-5319

Currency: USD
 Units: METRIC
 Frequency: 50 Hz

QX / QL Crane Components

Page 16
 March 2, 2009

BRIDGE DRIVE PRICING

| Type | Motor Code | Inverter Motor | Approx. weight/ drive (kg) | Motor kW | Synch motor speed (rpm) | Nominal motor current @ 400V | List Price | Lead Time (weeks) |
|------|------------|----------------|-------------------------------|-------------|-------------------------|------------------------------|-------------|-------------------|
| GES4 | MF06LA104 | | 30 | 0.55 / 0.12 | 3600 / 900 | 1.3 | 1497 | 2-4 |
| GES4 | MF06LA20P | x | 30 | 0.75 | 3600 | 2.1 | 1408 | 2-4 |
| GES4 | MF06MA104 | | 30 | 0.37 / 0.07 | 3600 / 900 | 0.9 | 1297 | 2-4 |
| GES4 | MF07X-104 | | 30 | 0.90 / 0.20 | 3600 / 900 | 2.7 | 1606 | 2-4 |
| GES4 | MF06LA100 | x | 30 | 0.65 | 4800 | 2.1 | 1343 | 2-4 |
| GES4 | MF06LA200 | x | 30 | 0.55 | 3600 | 1.8 | 1343 | 8-10 |
| GES4 | MF06LB100 | x | 30 | 1.1 | 4800 | 2.9 | 1584 | 8-10 |
| GES4 | MF06LB200 | x | 30 | 1.10 | 3600 | 2.9 | 1541 | 2-4 |
| GES4 | MF06MA100 | x | 30 | 0.45 | 4800 | 2.1 | 1254 | 8-10 |
| GES4 | MF06MA200 | x | 30 | 0.37 | 3600 | 1.2 | 1167 | 8-10 |
| GES5 | MF07X-104 | | 37 | 0.90 / 0.20 | 3600/900 | 2.7 | 2223 | 8-10 |
| GES5 | MF10M-104 | | 40 | 1.50 / 0.35 | 3600/900 | 3 | 2421 | 8-10 |
| GES5 | MF06LB100 | x | 37 | 1.10 | 4800 | 2.9 | 2155 | 8-10 |
| GES5 | MF06LB200 | x | 37 | 1.10 | 3600 | 2.9 | 2134 | 8-10 |
| GES5 | MF07XA100 | x | 37 | 1.80 | 4800 | 4.3 | 2310 | 8-10 |
| GES5 | MF07XA200 | x | 37 | 1.80 | 3600 | 3.9 | 2464 | 8-10 |
| GES5 | MF07XB100 | x | 37 | 3.00 | 4800 | 7.9 | 2310 | 8-10 |
| GES5 | MF07XB200 | x | 37 | 2.50 | 3600 | 6.5 | 2383 | 8-10 |



R&M Materials Handling, Inc.
 4501 Gateway Blvd.
 Springfield, OH 45502

www.rmhoist.com

List prices FOB factory, Springfield, Ohio,
 subject to change without notice.
 Phone: 937-328-5100 Fax: 937-325-5319

Currency: USD
 Units: METRIC
 Frequency: 50 Hz

QX Crane Components

BRIDGE PANEL PRICING

Page 17
 March 2, 2009

For use with two-speed hoist control and one hoist on bridge

| Type | Number of Motors for Hoisting | Max. kW of each Hoist Motor | Number of Hoists on Bridge | List Price - See Note! | | | Lead Time (weeks) |
|---------|-------------------------------|-----------------------------|----------------------------|------------------------|----------|--|-------------------|
| | | | | | 400 volt | | |
| BPPX-1 | 1 | 1.5 | 1 | | 842 | | 2-4 |
| BPR1-1 | 1 | 0.9 | 1 | | 937 | | 2-4 |
| BPP1-1 | 1 | 1.8 | 1 | | 937 | | 2-4 |
| BPP2-1 | 1 | 3.6 | 1 | | 937 | | 2-4 |
| BPP3-1 | 1 | 4.5 | 1 | | 937 | | 2-4 |
| BPP4-1 | 1 | 7.5 | 1 | | 1056 | | 8-10 |
| BPP5-1 | 1 | 9 | 1 | | 1235 | | 2-4 |
| BPP6-1 | 1 | 15 | 1 | | 1549 | | 2-4 |
| BPP7-1 | 1 | 18 | 1 | | 2112 | | 8-10 |
| BPP8-1 | 1 | 23 | 1 | | 2369 | | 8-10 |
| BP2P6-1 | 2 | 15 | 1 | | 2613 | | 8-10 |
| BP2P7-1 | 2 | 18 | 1 | | 3547 | | 8-10 |

Prices are subject to change depending on the actual crane specification. To get the most accurate bridge panel and inverter prices, use R&M's QuoteMaster[®] program.

Includes disconnect switch, mainline contactor, control voltage transformer, and autotransformer for the inverter controls as needed. (Autotransformer is needed when the power supply voltage is something other than 400-3-50.)

NOTE!

The above bridge panel prices do not include the price for the bridge inverter. The bridge inverter price must be added separately. See Bridge Inverter Pricing page.



R&M Materials Handling, Inc.
 4501 Gateway Blvd.
 Springfield, OH 45502

www.rmhoist.com

List prices FOB factory, Springfield, Ohio,
 subject to change without notice.
 Phone: 937-328-5100 Fax: 937-325-5319

Currency: USD
 Units: METRIC
 Frequency: 50 Hz

QX Crane Components

BRIDGE PANEL PRICING

Page 18
 March 2, 2009

For use with two-speed hoist control & two equal-capacity hoists on bridge

| Type | Number of Motors for Hoisting | Max. kW of each Hoist Motor | Number of Hoists on Bridge | List Price - See Note! | | | Lead Time (weeks) |
|---------|-------------------------------|-----------------------------|----------------------------|------------------------|----------|--|-------------------|
| | | | | | 400 volt | | |
| BPR1-2 | 1 | 0.9 | 2 | | 1338 | | 2-4 |
| BPP1-2 | 1 | 1.8 | 2 | | 1338 | | 2-4 |
| BPP2-2 | 1 | 3.6 | 2 | | 1338 | | 2-4 |
| BPP3-2 | 1 | 4.5 | 2 | | 1338 | | 2-4 |
| BPP4-2 | 1 | 7.5 | 2 | | 1509 | | 8-10 |
| BPP5-2 | 1 | 9 | 2 | | 1764 | | 2-4 |
| BPP6-2 | 1 | 15 | 2 | | 2213 | | 8-10 |
| BPP7-2 | 1 | 18 | 2 | | 3017 | | 8-10 |
| BPP8-2 | 1 | 23 | 2 | | 3385 | | 8-10 |
| BP2P6-2 | 2 | 15 | 2 | | 3733 | | 8-10 |
| BP2P7-2 | 2 | 18 | 2 | | 5067 | | 8-10 |

The above panels include tandem hoist control relays to allow separate or combined hoist operation (1, 1+2, 2)

Prices are subject to change depending on the actual crane specification. To get the most accurate bridge panel and inverter prices, use R&M's QuoteMaster[®] program.

Includes disconnect switch, mainline contactor, control voltage transformer, and autotransformer for the inverter controls as needed. (Autotransformer is needed when the power supply voltage is something other than 400-3-50.)

NOTE!

The above bridge panel prices do not include the price for the bridge inverter. The bridge inverter price must be added separately. See Bridge Inverter Pricing page.

R&M Materials Handling, Inc.
 4501 Gateway Blvd.
 Springfield, OH 45502



www.rmhoist.com

List prices FOB factory, Springfield, Ohio,
 subject to change without notice.
 Phone: 937-328-5100 Fax: 937-325-5319

Currency: USD
 Units: METRIC
 Frequency: 50 Hz

QX Crane Components

BRIDGE PANEL PRICING

Page 19
 March 2, 2009

For use with ControlMaster Plus hoist inverter

| Type | Number of Motors for Hoisting | Max. kW of each Hoist Motor | Number of Hoists on Bridge | List Price - See Note! | | | Lead Time (weeks) |
|---------|-------------------------------|-----------------------------|----------------------------|------------------------|----------|--|-------------------|
| | | | | | 400 volt | | |
| BPT1-1 | 1 | 1.8 | 1 | | 2153 | | 8-10 |
| BPT2-1 | 1 | 3.6 | 1 | | 2153 | | 8-10 |
| BPT3-1 | 1 | 4.5 | 1 | | 2153 | | 8-10 |
| BPT4-1 | 1 | 7.5 | 1 | | 3249 | | 8-10 |
| BPT5-1 | 1 | 9 | 1 | | 3926 | | 8-10 |
| BPT6-1 | 1 | 15 | 1 | | 4143 | | 8-10 |
| BPT7-1 | 1 | 18 | 1 | | 4684 | | 8-10 |
| BPT8-1 | 1 | 23 | 1 | | 5253 | | 8-10 |
| BPT9-1 | 1 | 28 | 1 | | 5822 | | 8-10 |
| BPTA-1 | 1 | 35 | 1 | | 6580 | | 8-10 |
| BP2T6-1 | 2 | 15 | 1 | | 6147 | | 8-10 |
| BP2T7-1 | 2 | 18 | 1 | | 7094 | | 8-10 |
| BP2T8-1 | 2 | 23 | 1 | | 9101 | | 8-10 |
| BP2T9-1 | 2 | 28 | 1 | | 10660 | | 8-10 |

Prices are subject to change depending on the actual crane specification. To get the most accurate bridge panel and inverter prices, use R&M's QuoteMaster[®] program.

Includes disconnect switch, mainline contactor, control voltage transformer, and autotransformer for the inverter controls as needed. (Autotransformer is needed when the power supply voltage is something other than 400-3-50.)

⁽¹⁾ Lead time is 8-10 weeks.

NOTE!

The above bridge panel prices do not include the price for the bridge inverter. The bridge inverter price must be added separately. See Bridge Inverter Pricing page.

R&M Materials Handling, Inc.
 4501 Gateway Blvd.
 Springfield, OH 45502



www.rmhoist.com

List prices FOB factory, Springfield, Ohio,
 subject to change without notice.

Phone: 937-328-5100 Fax: 937-325-5319

Currency: USD
 Units: METRIC
 Frequency: 50 Hz

QX Crane Components

BRIDGE PANEL PRICING

Page 20
 March 2, 2009

For use with ControlMaster Plus hoist inverter & two equal-capacity hoists on bridge

| Type | Number of Motors for Hoisting | Max. kW of each Hoist Motor | Number of Hoists on Bridge | List Price - See Note! | | | Lead Time (weeks) |
|---------|-------------------------------|-----------------------------|----------------------------|------------------------|--------------|--|-------------------|
| | | | | | 400 volt | | |
| BPT1-2 | 1 | 1.8 | 2 | | 3075 | | 8-10 |
| BPT2-2 | 1 | 3.6 | 2 | | 3075 | | 8-10 |
| BPT3-2 | 1 | 4.5 | 2 | | 3998 | | 8-10 |
| BPT4-2 | 1 | 7.5 | 2 | | 4642 | | 8-10 |
| BPT5-2 | 1 | 9 | 2 | | 5609 | | 8-10 |
| BPT6-2 | 1 | 15 | 2 | | 5918 | | 8-10 |
| BPT7-2 | 1 | 18 | 2 | | 6692 | | 8-10 |
| BPT8-2 | 1 | 23 | 2 | | 7504 | | 8-10 |
| BPT9-2 | 1 | 28 | 2 | | 8217 | | 8-10 |
| BPTA-2 | 1 | 35 | 2 | | 9400 | | 8-10 |
| BP2T6-2 | 2 | 15 | 2 | | 8781 | | 8-10 |
| BP2T7-2 | 2 | 18 | 2 | | 10135 | | 8-10 |
| BP2T8-2 | 2 | 23 | 2 | | 11530 | | 8-10 |
| BP2T9-2 | 2 | 28 | 2 | | 13514 | | 8-10 |

The above panels include tandem hoist control relays to allow separate or combined hoist operation (1, 1+2, 2)

Prices are subject to change depending on the actual crane specification. To get the most accurate bridge panel and inverter prices, use R&M's QuoteMaster[®] program.

Includes disconnect switch, mainline contactor, control voltage transformer, and autotransformer for the inverter controls as needed. (Autotransformer is needed when the power supply voltage is something other than 400-3-50.)

NOTE!

The above bridge panel prices do not include the price for the bridge inverter. The bridge inverter price must be added separately. See Bridge Inverter Pricing page.



R&M Materials Handling, Inc.
 4501 Gateway Blvd.
 Springfield, OH 45502

www.rmhoist.com

List prices FOB factory, Springfield, Ohio,
 subject to change without notice.
 Phone: 937-328-5100 Fax: 937-325-5319

Currency: USD
 Units: METRIC
 Frequency: 50 Hz

QL Crane Components

BRIDGE PANEL PRICING

Page 21
 March 2, 2009

For use with Electric Chain Hoist Contactor Control

| Type | | Max. kW of each Hoist Motor | Number of Hoists on Bridge | List Price - See Note! | | | Lead Time (weeks) |
|--------|--|-----------------------------|----------------------------|------------------------|----------|--|-------------------|
| | | | | | 400 volt | | |
| BPC1-1 | | 0.8 | 1 | | 937 | | 2-4 |
| BPC2-1 | | 1.8 | 1 | | 937 | | 2-4 |
| BPC3-1 | | 3.6 | 1 | | 937 | | 2-4 |
| BPC1-2 | | 0.8 | 2 | | 1338 | | 2-4 |
| BPC2-2 | | 1.8 | 2 | | 1338 | | 2-4 |
| BPC3-2 | | 3.6 | 2 | | 1338 | | 2-4 |

For use with LoadMate electric chain hoist with inverter hoist control

| | | | | | | | |
|--------|--|-----|---|--|------|--|-----|
| BPV1-1 | | 0.8 | 1 | | NA | | --- |
| BPV2-1 | | 1.8 | 1 | | 937 | | 2-4 |
| BPV3-1 | | 3.6 | 1 | | NA | | --- |
| BPV1-2 | | 0.8 | 2 | | NA | | --- |
| BPV2-2 | | 1.8 | 2 | | 1338 | | 2-4 |
| BPV3-2 | | 3.6 | 2 | | NA | | --- |

The above BPxx-2 panels include tandem hoist control relays to allow separate or combined hoist operation (I, I+II, II)

Prices are subject to change depending on the actual crane specification. To get the most accurate bridge panel and inverter prices, use R&M's QuoteMaster[®] program.

Includes disconnect switch, mainline contactor, control voltage transformer, and autotransformer for the inverter controls as needed. (Autotransformer is needed when the power supply voltage is something other than 400-3-50.)

NOTE!

The above bridge panel prices do not include the price for the bridge inverter. The bridge inverter price must be added separately. See Bridge Inverter Pricing page.



R&M Materials Handling, Inc.
 4501 Gateway Blvd.
 Springfield, OH 45502

www.rmhoist.com

List prices FOB factory, Springfield, Ohio,
 subject to change without notice.
 Phone: 937-328-5100 Fax: 937-325-5319

| Type | Maximum output current | | List Price | Lead Time (weeks) |
|------|------------------------|----------------------|------------|-------------------|
| | Nominal Current (A) | Starting Current (A) | | |
| | @ 400 Volts | @ 400 Volts | | |

| ControlMaster Select Inverter | | | | |
|-------------------------------|-----|-----|-------------|------|
| CMST 002F | 5.1 | 7.7 | 1760 | 2-4 |
| CMST 003F | 8 | 12 | 2031 | 2-4 |
| CMST 004F | 10 | 15 | 2302 | 2-4 |
| CMST 005F | 13 | 20 | 3114 | 8-10 |
| CMST 007F | 18 | 27 | 3655 | 8-10 |
| CMST 011F | 24 | 36 | 4739 | 8-10 |
| CMST 015F | 32 | 48 | 5415 | 8-10 |
| CMST 018F | 42 | 63 | 6742 | 8-10 |
| CMST 022F | 48 | 72 | 7744 | 8-10 |

| ControlMaster CMXC Inverter | | | | |
|-----------------------------|-----|-----|------------|-----|
| CMXC 022F | 5.0 | 7.5 | 460 | 2-4 |

Above prices are valid only when purchased with the bridge panel.

R&M Materials Handling, Inc.
 4501 Gateway Blvd.
 Springfield, OH 45502



www.rmhoist.com

List prices FOB factory, Springfield, Ohio,
 subject to change without notice.
 Phone: 937-328-5100 Fax: 937-325-5319

Currency: USD
 Units: METRIC
 Frequency: 50 Hz

QX / QL Crane Components

Page 23
 March 2, 2009

PUSHBUTTON PENDANT PRICING

| Type | ON / OFF | Hoist | Trolley | Bridge | Selector Switch | List Price | Lead Time (weeks) |
|--------------------------------------|----------|-------|---------|--------|-----------------|-------------|-------------------|
| PBR style Push Button Pendant | | | | | | | |
| PBR042001_00-N...PE20 | X | 2 | 0 | 0 | 0 | 406 | 2-4 |
| PBR082201_00-N...PE20 | X | 2 | 2 | 0 | 0 | 406 | 2-4 |
| PBR082221_00-N...PE30 | X | 2 | 2 | 2 | 0 | 406 | 2-4 |
| PBR122221_V2-N...PE30 | X | 2 | 2 | 2 | V2 | 542 | 2-4 |
| PBR122221_V3-N...PE30 | X | 2 | 2 | 2 | V3 | 542 | 2-4 |
| PBR122221_00-N...PE3E | X | 2x2 | 2x2 | 2 | 0 | 1590 | 2-4 |
| PD style Push Button Pendant | | | | | | | |
| PD06-2001NC00-...H0 | X | 2 | 0 | 0 | 0 | 555 | 2-4 |
| PD08-2201NC00-...H0 | X | 2 | 2 | 0 | 0 | 555 | 2-4 |
| PD08-2221NC00-...P0 | X | 2 | 2 | 2 | 0 | 555 | 2-4 |
| PD12-2221NCV2-...P0 | X | 2 | 2 | 2 | V2 | 704 | 2-4 |
| PD12-2221NCV3-...P0 | X | 2 | 2 | 2 | V3 | 704 | 2-4 |
| PD12-2221NC00-...PE | X | 2x2 | 2x2 | 2 | 0 | 1696 | 2-4 |
| Standby Heater for Pendant Station | | | | | | 135 | 8-10 |

Prices apply only when ordered with crane components or hoist.

0 = Not included
 2 = Two-speed
 V2 = 2 position selection (1 or 2)
 V3 = 3 position selection (1, 1+2, 2)
 X = Included
 PE2 = plug on SX hoist
 PE3 = plug on the moveable festoon trolley (on bridge)

Included:

Pendant cable for specified lift up to 15 m max.
 Pushbutton pendant station
 Plug



R&M Materials Handling, Inc.
 4501 Gateway Blvd.
 Springfield, OH 45502

www.rmhoist.com

List prices FOB factory, Springfield, Ohio,
 subject to change without notice.
 Phone: 937-328-5100 Fax: 937-325-5319

Currency: USD
 Units: METRIC
 Frequency: 50 Hz

QX / QL Crane Components
RACON II RADIO REMOTE CONTROL PRICING

Page 24
 March 2, 2009

| Type | Control Method | Hoist | Trolley | Bridge | Selector Switch | List Price | Lead Time (weeks) |
|---|----------------|-------|---------|--------|-----------------|----------------------------|-------------------|
| Single system for hoist | | | | | | | |
| RaConII RH110..... | Pushbutton | 2 | 2 | --- | none | 1939 | 2-4 |
| Single system for crane | | | | | | | |
| RaConII RS110..... | Pushbutton | 2 | 2 | 2 | none | 2061 | 2-4 |
| RaConII RF130..... | Pushbutton | 2 | 2 | 2 | none | 2283 | 2-4 |
| RaConII RF13S..... | Pushbutton | 2 | 2 | 2 | V3 | 2391 | 2-4 |
| Spare transmitter (when purchased with new system - add 25% to radio list price) | | | | | | + 0.25 x list price | |

Included:

2 = Two-speed

V3 = 3 position selection (1, 1+2, 2)

Main contactor On-button

Emergency Stop

Transmitter with battery and backup battery

Receiver & connection cable with ready-to-go plugs

Battery charger



R&M Materials Handling, Inc.
 4501 Gateway Blvd.
 Springfield, OH 45502

www.rmhoist.com

List prices FOB factory, Springfield, Ohio,
 subject to change without notice.

Phone: 937-328-5100 Fax: 937-325-5319

Currency: USD
 Units: METRIC
 Frequency: 50 Hz

QX / QL Crane Components

RACON RADIO REMOTE CONTROL PRICING

Page 25
 March 2, 2009

| Type | Control Method | Hoist | Trolley | Bridge | Selector Switch | List Price | Lead Time (weeks) |
|------|----------------|-------|---------|--------|-----------------|------------|-------------------|
|------|----------------|-------|---------|--------|-----------------|------------|-------------------|

Single system for a crane

| | | | | | | | |
|---------------------|------------|---|---|------|-------|-------------|------|
| RaCon508MI_0...00ST | Pushbutton | 2 | 2 | none | none | 2567 | 8-10 |
| RaCon516MI_0...00ST | Pushbutton | 2 | 2 | 2 | none | 3038 | 8-10 |
| RaCon516MI_S...00ST | Pushbutton | 2 | 2 | 2 | V2;V3 | 3344 | 8-10 |
| RaCon516SP_0...00ST | Joysticks | 2 | 2 | 2 | none | 4887 | 8-10 |
| RaCon516SP_S...00ST | Joysticks | 2 | 2 | 2 | V2;V3 | 5101 | 8-10 |

Tandem systems for two cranes

| | | | | | | | |
|---------------------|------------|---|---|---|------|-------------|------|
| RaCon516MI_0...T1ST | Pushbutton | 2 | 2 | 2 | none | 6872 | 8-10 |
| RaCon516SP_0...T1ST | Joysticks | 2 | 2 | 2 | none | 9759 | 8-10 |

| | |
|--|----------------------------|
| Spare transmitter (when purchased with new system - add 40% to radio list price) | + 0.40 x list price |
|--|----------------------------|

Included:

- | | |
|---|---|
| <p>2 = Two-speed V2 = 2 position selection (1 or 2) V3 = 3 position selection (1, 1+2, 2)</p> | <p>Main contactor On-button Emergency Stop Key Switch Transmitter with battery and backup battery Receiver & connection cable with ready-to-go plugs Battery charger</p> |
|---|---|

R&M Materials Handling, Inc.
 4501 Gateway Blvd.
 Springfield, OH 45502



www.rmhoist.com

List prices FOB factory, Springfield, Ohio,
 subject to change without notice.
 Phone: 937-328-5100 Fax: 937-325-5319

Currency: USD
Units: METRIC
Frequency: 50 Hz

QX / QL Crane Components

CRANE COMPONENT OPTIONS PRICING

Page 26
March 2, 2009

| | Note | Code | Lead Time (weeks) | List Price |
|--|------|-------|-------------------|------------------------|
| Thermal protection for bridge motor | B,C | BM08 | 8-10 | 306 |
| IP66 Protection for bridge motor | C | BM09 | 8-10 | 306 |
| Class H insulation for bridge motor | C | BM11 | 8-10 | 260 |
| Manual release for bridge motor brake | B,C | BRA06 | 8-10 | 203 |
| Magnetic limit switch for bridge | | BT10 | 8-10 | 609 |
| Photo detector anti-collision device for an existing crane | B,G | BT20 | 2-4 | 747 |
| Ultrasonic sensors anti-collision device for an existing crane | B,G | BT20 | 8-10 | 2640 |
| Rubber cables for hoist power supply (% of standard festoon package) | | CBL07 | 8-10 | + 28% |
| Cable tray component package | | CBL08 | 8-10 | 690 |
| Bumper extensions for bridge end trucks (One pair) | | DES44 | 8-10 | 1110 |
| Insulation for bridge panel | B,G | EL23 | 8-10 | Use QuoteMaster |
| Thermostat controlled heating | B,G | EL24 | 8-10 | Use QuoteMaster |
| Bridge panel light - operated by door | G | EL25 | 8-10 | 734 |
| Bridge panel light - manually operated | G | EL25 | 8-10 | 579 |
| Rain cover for bridge panel | G | EL26 | 8-10 | 273 |
| Cooling device per bridge panel - AC - Air conditioner | B,G | EL29 | 8-10 | 9263 |
| Cooling device per bridge panel - CE - Cooling element | B,G | EL29 | 8-10 | 2970 |
| Cooling device per bridge panel - CH - Air channel | B,G | EL29 | 8-10 | 7059 |
| Cooling device per bridge panel - CHF - Air channel with filter | B,G | EL29 | 8-10 | 8500 |
| Horn DBA 108 | | ELE05 | 2-4 | 271 |
| All electrics in bridge panel | B,G | ELE10 | 8-10 | Use QuoteMaster |
| Plug-in connector for pendant cable | | ELE16 | 2-4 | N.C. |
| Non-standard voltage/frequency for crane package | B | ELE21 | 8-10 | 509 |
| Pliotex type wire marker | | ELE48 | 8-10 | 311 |
| Provision for crane lights (Price/light, 6 lights max./crane) | B,G | ELE61 | 8-10 | 398 |

Note A: List price = Regular list price x 1.65

Note B: Refer to hoist technical guide for details/restrictions

Note C: Per motor

Note D: Contact factory

Note E: Add HoistMonitor HS11 to hoist

Note F: Add HoistMonitor Elite HS13 to each hoist

Note G: Not available for chain hoist cranes

Note H: Price per direction



R&M Materials Handling, Inc.
4501 Gateway Blvd.
Springfield, OH 45502

www.rmhoist.com

List prices FOB factory, Springfield, Ohio,
subject to change without notice.

Phone: 937-328-5100 Fax: 937-325-5319

Currency: USD
 Units: METRIC
 Frequency: 50 Hz

QX / QL Crane Components

CRANE COMPONENT OPTIONS PRICING

Page 27
 March 2, 2009

| | Note | Code | Lead Time (weeks) | List Price |
|--|-------|-------|-------------------|-------------|
| Hoist operated limit switch that trips mainline contactor | B,G | ELE64 | 8-10 | 433 |
| Warning indication for traveling movement | | ELE98 | --- | --- |
| Flashing light - activated through crane traveling | | | 2-4 | 273 |
| Flashing light - activated through crane/trolley traveling | | | 2-4 | 273 |
| Flashing light - activated through trolley traveling | | | 2-4 | 273 |
| Warning sound - activated through crane traveling | | | 2-4 | 273 |
| Warning sound - activated through crane/trolley traveling | | | 2-4 | 273 |
| Warning sound - activated through trolley traveling | | | 2-4 | 273 |
| Flashing Light/Warning sound - activated through crane traveling | | | 2-4 | 336 |
| Flashing Light/Warning sound - activated through crane/trolley traveling | | | 2-4 | 336 |
| Flashing Light/Warning sound - activated through trolley traveling | | | 2-4 | 336 |
| Special lubrication for gears | B | GE21 | 8-10 | 100 |
| One-step bridge travel limit switch (Slowdown) | | LIM10 | 2-4 | STD |
| One-step bridge travel limit switch (Stop) | | LIM11 | 2-4 | 68 |
| Two-step bridge travel limit switch (Slowdown+stop) | | LIM12 | 2-4 | 447 |
| Standby heater for bridge motor | C | MOT17 | 8-10 | 366 |
| Rain cover for bridge motor | C,G | MOT18 | 8-10 | 135 |
| Photo detector anti-collision device | B,G,H | OTH08 | --- | --- |
| Stop operation - for one direction | | | 2-4 | 747 |
| Slowdown operation - for one direction | | | 2-4 | 747 |
| Slowdown & stop operation - for one direction | | | 2-4 | 1495 |
| Ultrasonic sensors anti-collision device | B,G,H | OTH08 | --- | --- |
| Stop operation - for one direction | | | 8-10 | 2640 |
| Slowdown operation - for one direction | | | 8-10 | 2640 |
| Slowdown & stop operation - for one direction | | | 8-10 | 5280 |

Note A: List price = Regular list price x 1.65

Note B: Refer to hoist technical guide for details/restrictions

Note C: Per motor

Note D: Contact factory

Note E: Add HoistMonitor HS11 to hoist

Note F: Add HoistMonitor Elite HS13 to each hoist

Note G: Not available for QL chain hoist cranes

Note H: Price per direction



R&M Materials Handling, Inc.
 4501 Gateway Blvd.
 Springfield, OH 45502

www.rmhoist.com

List prices FOB factory, Springfield, Ohio,
 subject to change without notice.

Phone: 937-328-5100 Fax: 937-325-5319

Currency: USD
 Units: METRIC
 Frequency: 50 Hz

QX / QL Crane Components

CRANE COMPONENT OPTIONS PRICING

Page 28
 March 2, 2009

| | Note | Code | Lead Time (weeks) | List Price |
|---|-------|-------|-------------------|--------------|
| Plug kit + pigtail for radio controls (By others) | | | 2-4 | 131 |
| Plug kit for radio controls (By others) | | | 2-4 | 53 |
| Rail sweeps - wood (Price per end truck) | B | OTH21 | 8-10 | 793 |
| Rail sweeps - steel (Price per end truck) | B | OTH21 | 8-10 | 2488 |
| Storm locks (Price per end truck) | B | OTH22 | 8-10 | 1267 |
| Anti-jump catches for end truck (Price per end truck) | B | OTH24 | 8-10 | 688 |
| Patented track wheels for end truck (Price per 8 wheels) | | OTH26 | 2-4 | 1354 |
| Crane number sticker | | OTH28 | 2-4 | 68 |
| Crane data plate | | OTH30 | 2-4 | 95 |
| Steel wheels for under running end trucks (Price per 8 wheels) | | | 8-10 | 1169 |
| IP55 stainless steel bridge panel adder (% of std bridge panel price) | A,B,G | PAN04 | 8-10 | + 45% |
| IP66 protection rating for stainless steel bridge panel | A,B,G | PAN07 | 8-10 | + 65% |
| Standby heater for bridge panel | G | PAN08 | 8-10 | 217 |
| Plug source in bridge panel (1pc, 115v, 16A) - less plug outlet | G | PAN17 | 8-10 | 1628 |
| Standby heater for pendant | G | PEN03 | 8-10 | 135 |
| Contactora bridge control (Two-speed) | | PRI01 | 8-10 | 839 |
| Longer chain for trolley tow arm | | PS05 | 2-4 | 68 |

Note A: List price = Regular list price x 1.65

Note B: Refer to hoist technical guide for details/restrictions

Note C: Per motor

Note D: Contact factory

Note E: Add HoistMonitor HS11 to hoist

Note F: Add HoistMonitor Elite HS13 to each hoist

Note G: Not available for QL chain hoist cranes

Note H: Price per direction

R&M Materials Handling, Inc.
 4501 Gateway Blvd.
 Springfield, OH 45502



www.rmhoist.com

List prices FOB factory, Springfield, Ohio,
 subject to change without notice.

Phone: 937-328-5100 Fax: 937-325-5319

Currency: USD
 Units: METRIC
 Frequency: 50 Hz

QX / QL Crane Components

Page 29
 March 2, 2009

SPARE PARTS KIT PRICING

Spare Parts Packages for Bridge Panels

| Hoisting Motor Size | List Price |
|---------------------|-------------|
| P1, P2, P3 | 415 |
| P4 | 458 |
| P5, P6 | 633 |
| P7 | 828 |
| P8 | 1178 |

Spare part package for the bridge panel include:
 - Mainline contactor and fuses

Spare Parts Packages for Traveling Drives

| Motor Size | List Price |
|----------------------|------------|
| MF06 (with DC brake) | 456 |
| MF07 | 503 |

Spare part package for the drives include:
 - D.C. brake repair set - 2 pcs
 - D.C. brake rectifier - 2 pcs

Spare Parts Packages - Traveling Inverters

| Inverter Size | List Price |
|---------------|-------------|
| CMXC 007 | 568 |
| CMXC 022 | 785 |
| CM Select 002 | 2017 |
| CM Select 003 | 2544 |
| CM Select 004 | 3070 |

Spare Parts Packages for Traveling Drives

| Motor Size | List Price |
|---------------------------|------------|
| MF06 (with Compact brake) | 864 |

Spare part package for the drives include:
 - Friction disc kit

Prices are valid only when purchased with a components package.

Additional discounting beyond your standard R&M discount is not available on spare parts kits.

R&M Materials Handling, Inc.
 4501 Gateway Blvd.
 Springfield, OH 45502



www.rmhoist.com

List prices FOB factory, Springfield, Ohio,
 subject to change without notice.

Phone: 937-328-5100 Fax: 937-325-5319