

Sales Policy

QX / QL Crane Components

March 2, 2009

SALES POLICY

Terms and Conditions of Sale

All sales are subject to the R&M Materials Handling, Inc. Standard Terms and Conditions of Sale (Revision 101707), a copy of which is available at www.rmhoist.com or upon request from your R&M Materials Handling, Inc. customer service/sales representatives and the terms of which are incorporated as if fully rewritten herein.

Currency: USD

R&M Materials Handling, Inc.
4501 Gateway Blvd.
Springfield, OH 45502



www.rmhoist.com

List prices FOB factory, Springfield, Ohio,
subject to change without notice.

Phone: 937-328-5100 Fax: 937-325-5319

This page is intentionally left blank.

Currency: USD
Units: METRIC
Frequency: 60 Hz

QX / QL Crane Components

March 2, 2009

QX Crane Components for Spacemaster® SX electric wire rope hoists

QL Crane Components for LoadMate® electric chain hoists

Table of Contents	
Description	Page No.
Under Running End Truck Pricing	1
Top Running End Truck Pricing	6
End Truck Joint Plate Pricing	11
End Truck Bumper Pricing	13
Bridge Drive Pricing	14
QX Bridge Panel Pricing	17
QL Bridge Panel Pricing	21
Bridge Inverter Pricing	22
Pushbutton Pendant Pricing	23
RaCon Series II Radio Control System Pricing	24
RaCon Radio Control System Pricing	25
Crane Component Options Pricing	26
Spare Parts Packages Pricing	29

Note: Festoon package selection and pricing is available through R&M's **QuoteMaster®** program.

R&M Materials Handling, Inc.
4501 Gateway Blvd.
Springfield, OH 45502



www.rmhoist.com

List prices FOB factory, Springfield, Ohio,
subject to change without notice.

Phone: 937-328-5100 Fax: 937-325-5319

Currency: USD
 Units: METRIC
 Frequency: 60 Hz

QX/QL Crane Components

UNDER RUNNING END TRUCK PRICING

Page 1
 March 2, 2009

Type	Runway Beam Flange Width Range (mm)	Whl. Dia. (mm)	Wheel Base (mm)	Approx. weight/trk. (kg)	Max. Static Corner Load (kN)	List Price per End Truck	Lead Time (weeks)
RU08-12	73 - 120	80	1200	110	25	1428	8-10
	121 - 168						
	169 - 216						
	217 - 264						
	265 - 313						
RU08-14	73 - 120	80	1400	117	25	1470	8-10
	121 - 168						
	169 - 216						
	217 - 264						
	265 - 313						
RU08-18	73 - 120	80	1800	131	25	1512	2-4
	121 - 168						
	169 - 216						
	217 - 264						
	265 - 313						
RU08-23	73 - 120	80	2300	148	23	1596	2-4
	121 - 168						
	169 - 216						
	217 - 264						
	265 - 313						

Note: Maximum Static Corner Load is based on Fem 2m duty at 32 m/min.

RU/RH/UT style end truck is a 8-wheel end truck - see outline drawing.

Specify the flange width of the runway beam when ordering under running end trucks

Drives, joint plates, and bumpers are sold separately.

End Truck	Suitable Bridge Drive
UT16	DS3, DS4
RU08, RU10, RH10	GEK



R&M Materials Handling, Inc.
 4501 Gateway Blvd.
 Springfield, OH 45502

www.rmhoist.com

List prices FOB factory, Springfield, Ohio,
 subject to change without notice.

Phone: 937-328-5100 Fax: 937-325-5319

Currency: USD
 Units: METRIC
 Frequency: 60 Hz

QX/QL Crane Components
 UNDER RUNNING END TRUCK PRICING

Page 2
 March 2, 2009

Type	Runway Beam Flange Width Range (mm)	Whl. Dia. (mm)	Wheel Base (mm)	Approx. weight/trk. (kg)	Max. Static Corner Load (kN)	List Price per End Truck	Lead Time (weeks)
RU08-28	73 - 120	80	2800	165	20	1680	8-10
	121 - 168						
	169 - 216						
	217 - 264						
	265 - 313						
RU10-12	82 - 130	100	1200	161	46	1853	8-10
	131 - 178						
	179 - 226						
	227 - 274						
	275 - 322						
RU10-14	82 - 130	100	1400	171	46	1901	8-10
	131 - 178						
	179 - 226						
	227 - 274						
	275 - 322						
RU10-18	82 - 130	100	1800	191	46	1939	2-4
	131 - 178						
	179 - 226						
	227 - 274						
	275 - 322						

Note: Maximum Static Corner Load is based on Fem 2m duty at 32 m/min.

RU/RH/UT style end truck is a 8-wheel end truck - see outline drawing.

Specify the flange width of the runway beam when ordering under running end trucks

Drives, joint plates, and bumpers are sold separately.

End Truck	Suitable Bridge Drive
UT16	DS3, DS4
RU08, RU10, RH10	GEK



R&M Materials Handling, Inc.
 4501 Gateway Blvd.
 Springfield, OH 45502

www.rmhoist.com

List prices FOB factory, Springfield, Ohio,
 subject to change without notice.

Phone: 937-328-5100 Fax: 937-325-5319

Currency: USD
 Units: METRIC
 Frequency: 60 Hz

QX/QL Crane Components
 UNDER RUNNING END TRUCK PRICING

Page 3
 March 2, 2009

Type	Runway Beam Flange Width Range (mm)	Whl. Dia. (mm)	Wheel Base (mm)	Approx. weight/trk. (kg)	Max. Static Corner Load (kN)	List Price per End Truck	Lead Time (weeks)
RU10-23	82 - 130	100	2300	217	46	1978	2-4
	131 - 178						
	179 - 226						
	227 - 274						
	275 - 322						
RU10-28	82 - 130	100	2800	275	46	2027	2-4
	131 - 178						
	179 - 226						
	227 - 274						
	275 - 322						
RU10-32	82 - 130	100	3200	299	44	2070	8-10
	131 - 178						
	179 - 226						
	227 - 274						
	275 - 322						
RU10-35	82 - 130	100	3500	318	40	2108	8-10
	131 - 178						
	179 - 226						
	227 - 274						
	275 - 322						

Note: Maximum Static Corner Load is based on Fem 2m duty at 32 m/min.

RU/RH/UT style end truck is a 8-wheel end truck - see outline drawing.

Specify the flange width of the runway beam when ordering under running end trucks

Drives, joint plates, and bumpers are sold separately.

End Truck	Suitable Bridge Drive
UT16	DS3, DS4
RU08, RU10, RH10	GEK



R&M Materials Handling, Inc.
 4501 Gateway Blvd.
 Springfield, OH 45502

www.rmhoist.com

List prices FOB factory, Springfield, Ohio,
 subject to change without notice.

Phone: 937-328-5100 Fax: 937-325-5319

Currency: USD
 Units: METRIC
 Frequency: 60 Hz

QX/QL Crane Components

UNDER RUNNING END TRUCK PRICING

Page 4
 March 2, 2009

Type	Runway Beam Flange Width Range (mm)	Whl. Dia. (mm)	Wheel Base (mm)	Approx. weight/trk. (kg)	Max. Static Corner Load (kN)	List Price per End Truck	Lead Time (weeks)
RH10-14	82 - 130	100	1400	285	46	2694	8-10
	131 - 178						
	179 - 226						
	227 - 274						
	275 - 322						
RH10-18	82 - 130	100	1800	305	46	2729	8-10
	131 - 178						
	179 - 226						
	227 - 274						
	275 - 322						
RH10-23	82 - 130	100	2300	330	46	2773	8-10
	131 - 178						
	179 - 226						
	227 - 274						
	275 - 322						
RH10-28	82 - 130	100	2800	370	46	2816	8-10
	131 - 178						
	179 - 226						
	227 - 274						
	275 - 322						

Note: Maximum Static Corner Load is based on Fem 2m duty at 32 m/min.

RU/RH/UT style end truck is a 8-wheel end truck - see outline drawing.

Specify the flange width of the runway beam when ordering under running end trucks

Drives, joint plates, and bumpers are sold separately.

End Truck	Suitable Bridge Drive
UT16	DS3, DS4
RU08, RU10, RH10	GEK



R&M Materials Handling, Inc.
 4501 Gateway Blvd.
 Springfield, OH 45502

www.rmhoist.com

List prices FOB factory, Springfield, Ohio,
 subject to change without notice.

Phone: 937-328-5100 Fax: 937-325-5319

Currency: USD
 Units: METRIC
 Frequency: 60 Hz

QX/QL Crane Components
 UNDER RUNNING END TRUCK PRICING

Page 5
 March 2, 2009

Type	Runway Beam Flange Width Range (mm)	Whl. Dia. (mm)	Wheel Base (mm)	Approx. weight/trk. (kg)	Max. Static Corner Load (kN)	List Price per End Truck	Lead Time (weeks)
UT16-12	99 - 200	160	1200	370	70	3842	8-10
UT16-12	200 - 331	160	1200	380	70	3842	8-10
UT16-14	99 - 200	160	1400	405	70	3899	8-10
UT16-14	200 - 331	160	1400	415	70	3899	8-10
UT16-18	99 - 200	160	1800	440	70	4037	8-10
UT16-18	200 - 331	160	1800	450	70	4037	8-10
UT16-22	99 - 200	160	2200	480	70	4143	2-4
UT16-22	200 - 331	160	2200	490	70	4143	2-4
UT16-28	99 - 200	160	2800	540	70	4354	8-10
UT16-28	200 - 331	160	2800	550	70	4354	8-10

Note: Maximum Static Corner Load is based on Fem 2m duty at 32 m/min.
 RU/RH/UT style end truck is a 8-wheel end truck - see outline drawing.
 Specify the flange width of the runway beam when ordering under running end trucks
 Drives, joint plates, and bumpers are sold separately.

End Truck	Suitable Bridge Drive
UT16	DS3, DS4
RU08, RU10, RH10	GEK

R&M Materials Handling, Inc.
 4501 Gateway Blvd.
 Springfield, OH 45502



www.rmhoist.com

List prices FOB factory, Springfield, Ohio,
 subject to change without notice.
 Phone: 937-328-5100 Fax: 937-325-5319

Currency: USD
 Units: METRIC
 Frequency: 60 Hz

QX/QL Crane Components

Page 6
 March 2, 2009

TOP RUNNING END TRUCK PRICING

Type	Wheel Tread Width Range (mm)	Whl. Dia. (mm)	Wheel Base (mm)	Approx. weight/trk. (kg)	List Price per End Truck	Lead Time (weeks)	
						S.G.	D.G.
RTL09-13	50 - 70	90	1250	53	584	8-10	NA
RTL09-16	50 - 70	90	1600	67	649	8-10	8-10
RTL09-20	50 - 70	90	2000	75	735	8-10	8-10
RTN09-13	50 - 70	90	1250	78	840	8-10	NA
RTN09-16	50 - 70	90	1600	100	916	2-4	2-4
RTN09-20	50 - 70	90	2000	114	993	2-4	2-4
RTN09-25	50 - 70	90	2500	133	1069	2-4	2-4
RTN11-16	52 - 87	110	1600	127	1070	2-4	2-4
RTN11-20	52 - 87	110	2000	146	1130	2-4	2-4
RTN11-25	52 - 87	110	2500	169	1200	2-4	2-4
RTN11-32	52 - 87	110	3200	199	1298	2-4	2-4

See outline drawing for wheel load information or use R&M's **QuoteMaster**® program.

Drives, joint plates, and bumpers are sold separately.

Bogie end truck weight and price is for two end trucks plus connector.

End Truck	Suitable Bridge Drive
RSN09, RSN11, RTL09, RTN09, RTN11, RT14	GES3
RT20	GES3, GES4
RT25, RT32	GES4, GES5
RT50	GES5



R&M Materials Handling, Inc.
 4501 Gateway Blvd.
 Springfield, OH 45502

www.rmhoist.com

List prices FOB factory, Springfield, Ohio,
 subject to change without notice.

Phone: 937-328-5100 Fax: 937-325-5319

Currency: USD
 Units: METRIC
 Frequency: 60 Hz

QX/QL Crane Components

Page 7
 March 2, 2009

TOP RUNNING END TRUCK PRICING

Type	Wheel Tread Width Range (mm)	Whl. Dia. (mm)	Wheel Base (mm)	Approx. weight/trk. (kg)	List Price per End Truck	Lead Time (weeks)	
						S.G.	D.G.
RT14-14	50 - 75	140	1400	193	1015	8-10	8-10
RT14-18	50 - 75	140	1800	217	1070	8-10	8-10
RT14-22	50 - 75	140	2200	239	1137	2-4	2-4
RT14-27	50 - 75	140	2700	268	1205	2-4	8-10
RT14-31	50 - 75	140	3100	290	1286	8-10	8-10
RT14-38	50 - 75	140	3800	330	1367	8-10	8-10
RT20-18	55 - 100	200	1800	231	1733	8-10	8-10
RT20-22	55 - 100	200	2200	260	1814	2-4	8-10
RT20-27	55 - 100	200	2700	297	1909	2-4	2-4
RT20-31	55 - 100	200	3100	326	2058	2-4	2-4
RT20-38	55 - 100	200	3800	377	2159	8-10	8-10
RT20B-12	55 - 100	200	1200	416	3669	NA	2-4
RT20B-14	55 - 100	200	1400	444	3845	NA	8-10
RT20B-16	55 - 100	200	1600	474	3947	NA	8-10
RT20B-18	55 - 100	200	1800	502	4156	NA	8-10
RT20B-20	55 - 100	200	2000	560	4332	NA	8-10

See outline drawing for wheel load information or use R&M's **QuoteMaster**[®] program.

Drives, joint plates, and bumpers are sold separately.

Bogie end truck weight and price is for two end trucks plus connector.

End Truck	Suitable Bridge Drive
RSN09, RSN11, RTL09, RTN09, RTN11, RT14	GES3
RT20	GES3, GES4
RT25, RT32	GES4, GES5
RT50	GES5



R&M Materials Handling, Inc.
 4501 Gateway Blvd.
 Springfield, OH 45502

www.rmhoist.com

List prices FOB factory, Springfield, Ohio,
 subject to change without notice.

Phone: 937-328-5100 Fax: 937-325-5319

Currency: USD
 Units: METRIC
 Frequency: 60 Hz

QX/QL Crane Components

Page 8
 March 2, 2009

TOP RUNNING END TRUCK PRICING

Type	Wheel Tread Width Range (mm)	Whl. Dia. (mm)	Wheel Base (mm)	Approx. weight/trk. (kg)	List Price per End Truck	Lead Time (weeks)	
						S.G.	D.G.
RT25-22	55 - 100	250	2200	376	2572	8-10	8-10
RT25-27	55 - 100	250	2700	426	2816	2-4	8-10
RT25-31	55 - 100	250	3100	493	3060	8-10	2-4
RT25-38	55 - 100	250	3800	641	3263	8-10	8-10
RT25-45	55 - 100	250	4500	681	3507	8-10	8-10
RT25-50	55 - 100	250	5000	739	3831	8-10	8-10
RT25-55	55 - 100	250	5500	796	4211	8-10	8-10
RT25B-14	55 - 100	250	1400	637	6404	NA	8-10
RT25B-16	55 - 100	250	1600	677	6722	NA	8-10
RT25B-18	55 - 100	250	1800	717	7020	NA	8-10
RT25B-20	55 - 100	250	2000	759	7338	NA	8-10
RT32-22	55 - 100	320	2200	488	3980	8-10	8-10
RT32-27	55 - 100	320	2700	544	4170	8-10	8-10
RT32-31	55 - 100	320	3100	596	4319	8-10	2-4
RT32-38	55 - 100	320	3800	733	4617	8-10	8-10
RT32-45	55 - 100	320	4500	765	4752	8-10	8-10
RT32-50	55 - 100	320	5000	920	5348	8-10	8-10
RT32-55	55 - 100	320	5500	986	5767	8-10	8-10

See outline drawing for wheel load information or use R&M's **QuoteMaster**® program.

Drives, joint plates, and bumpers are sold separately.

Bogie end truck weight and price is for two end trucks plus connector.

End Truck	Suitable Bridge Drive
RSN09, RSN11, RTL09, RTN09, RTN11, RT14	GES3
RT20	GES3, GES4
RT25, RT32	GES4, GES5
RT50	GES5



R&M Materials Handling, Inc.
 4501 Gateway Blvd.
 Springfield, OH 45502

www.rmhoist.com

List prices FOB factory, Springfield, Ohio,
 subject to change without notice.

Phone: 937-328-5100 Fax: 937-325-5319

Currency: USD
 Units: METRIC
 Frequency: 60 Hz

QX/QL Crane Components

Page 9
 March 2, 2009

TOP RUNNING END TRUCK PRICING

Type	Wheel Tread Width Range (mm)	Whl. Dia. (mm)	Wheel Base (mm)	Approx. weight/trk. (kg)	List Price per End Truck	Lead Time (weeks)	
						S.G.	D.G.
RT32B-14	55 - 100	320	1400	829	9071	NA	8-10
RT32B-16	55 - 100	320	1600	883	9511	NA	8-10
RT32B-18	55 - 100	320	1800	935	9937	NA	8-10
RT32B-20	55 - 100	320	2000	989	10411	NA	8-10
RT50-22	55 - 100	500	2200	790	6052	8-10	8-10
RT50-27	55 - 100	500	2700	900	6512	8-10	8-10
RT50-31	55 - 100	500	3100	960	6810	8-10	8-10
RT50-38	55 - 100	500	3800	1140	7284	8-10	8-10
RT50-45	55 - 100	500	4500	1320	7744	8-10	8-10
RT50-50	55 - 100	500	5000	1490	8245	8-10	8-10
RT50-55	55 - 100	500	5500	1590	8556	8-10	8-10
RT50B-16	55 - 100	500	1600	898	12104	NA	8-10
RT50B-18	55 - 100	500	1800	978	12618	NA	8-10
RT50B-20	55 - 100	500	2000	1058	13187	NA	8-10

See outline drawing for wheel load information or use R&M's **QuoteMaster**® program.

Drives, joint plates, and bumpers are sold separately.

Bogie end truck weight and price is for two end trucks plus connector.

End Truck	Suitable Bridge Drive
RSN09, RSN11, RTL09, RTN09, RTN11, RT14	GES3
RT20	GES3, GES4
RT25, RT32	GES4, GES5
RT50	GES5



R&M Materials Handling, Inc.
 4501 Gateway Blvd.
 Springfield, OH 45502

www.rmhoist.com

List prices FOB factory, Springfield, Ohio,
 subject to change without notice.

Phone: 937-328-5100 Fax: 937-325-5319

Currency: USD
 Units: METRIC
 Frequency: 60 Hz

QX/QL Crane Components

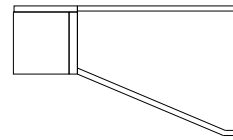
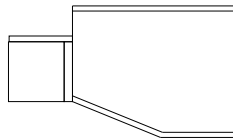
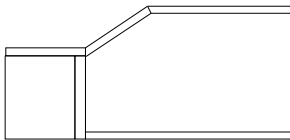
Page 10
 March 2, 2009

TOP RUNNING END TRUCK PRICING

Type	Wheel Tread Width Range (mm)	Whl. Dia. (mm)	Wheel Base (mm)	Approx. weight/trk. (kg)	List Price per End Truck	Lead Time (weeks)	
						S.G.	D.G.
RSN09-13	50 - 70	90	1250	86	916	8-10	N.A.
RSN09-16	50 - 70	90	1600	116	993	8-10	8-10
RSN09-20	50 - 70	90	2000	130	1069	8-10	8-10
RSN09-25	50 - 70	90	2500	149	1184	8-10	8-10
RSN11-16	52 - 87	110	1600	179	1070	8-10	8-10
RSN11-20	52 - 87	110	2000	202	1139	8-10	8-10
RSN11-25	52 - 87	110	2500	230	1223	8-10	8-10
RSN11-32	52 - 87	110	3200	267	1374	8-10	8-10

On the RSN end truck, the girder is joined to joint plate through a shear type connection.

Samples of a shear joint connection



See outline drawing for wheel load information or use R&M's **QuoteMaster**® program.

Drives, end truck joint plates, and bumpers must be added separately.

End Truck	Suitable Bridge Drive
RSN09, RSN11, RTL09, RTN09, RTN11, RT14	GES3
RT20	GES3, GES4
RT25, RT32	GES4, GES5
RT50	GES5

R&M Materials Handling, Inc.
 4501 Gateway Blvd.
 Springfield, OH 45502



www.rmhoist.com

List prices FOB factory, Springfield, Ohio,
 subject to change without notice.

Phone: 937-328-5100 Fax: 937-325-5319

Type	Possible Girder Connection Position		Suitable for End Truck Type	Maximum Flange Width (mm)	List Price per End Truck		Lead Time (weeks)
	Profile	Box			S.G.	D.G.	
EBN09-400x200	S;M;L	S;M;L	RSN09	400	153	298	8-10
EBN11-400x255	S;M;L	S;M;L	RSN11	400	191	390	8-10
A3	S;M	S;M	RTN09, RTL09	310	99	199	2-4
A4	S;M	S;M	RTN11	360	99	199	2-4
A6	S;M	S;M	RTN11	550	99	199	8-10
K4	S;M	S;M	RT25; RT32	410	373	745	8-10
K5	S;M	S;M	RT25; RT32; RT50	520	373	745	2-4
K7	S;M	S;M	RT32; RT50	740	373	745	8-10
K9	S;M	S;M	RT50	990	442	865	8-10
L3	S;M	S;M	RT20	300	230	461	2-4
L4	S;M	S;M	RT20	410	230	461	2-4
L5	S;M	S;M	RT20	520	230	461	2-4
R3	S;M;L	S;M;L	RT20	300	285	569	8-10
R4	S;M;L	S;M;L	RT20	410	285	569	2-4
R5	S;M;L	S;M;L	RT20	520	285	569	8-10

S = Standard connection
M = Medium connection
L = Low connection
H = High connection
S.G. = Single girder
D.G. = Double girder

Above prices apply only when ordered with end truck.
See End Truck Technical Guide for more information.
XXX = User specified dimension (mm)

R&M Materials Handling, Inc.
4501 Gateway Blvd.
Springfield, OH 45502



www.rmhoist.com

List prices FOB factory, Springfield, Ohio,
subject to change without notice.
Phone: 937-328-5100 Fax: 937-325-5319

Currency: USD
Units: METRIC
Frequency: 60 Hz

QX / QL Crane Components

Page 12
March 2, 2009

END TRUCK JOINT PLATE PRICING

Type	Possible Connection Position		Suitable for End Truck Type	Maximum Flange Width (mm)	List Price per End Truck		Lead Time (weeks)
	Profile	Box			S.G.	D.G.	
S4	no	L	RT25; RT32	410	379	758	8-10
S5	no	L	RT25; RT32	520	379	758	8-10
S6	no	L	RT32; RT50	520	474	948	8-10
S7	no	L	RT32; RT50	740	474	948	8-10
BA1	S	no	RU08	See Note	92	191	2-4
BA2	S	no	RU08	See Note	92	191	2-4
BA3	S	no	RU08	See Note	92	191	2-4
SA3	S;M;H	S;M;H	RU08	300	92	191	8-10
BB2	S	no	RU10	See Note	92	191	2-4
BB3	S	no	RU10	See Note	92	191	2-4
BB4	S	no	RU10	See Note	92	191	2-4
BB5	S	no	RU10	See Note	92	191	2-4
SB4	S;M	S;M	RU10	410	92	191	8-10
HB4(A)	S;M	S;M	RH10	410	109	217	8-10
HB4(B)	S;M	S;M	RH10	410	109	217	8-10
KB2	S	no	RH10	See Note	94	217	8-10
KB3	S	no	RH10	See Note	94	195	8-10
KB4	S	no	RH10	See Note	94	195	8-10
KB5	S	no	RH10	See Note	94	195	8-10

Note: These are bolted connections without a joint plate. The different types define the bolt layout.

S = Standard connection
M = Medium connection
L = Low connection
H = High connection
S.G. = Single girder
D.G. = Double girder

Above prices apply only when ordered with end truck.
See End Truck Technical Guide for more information.
XXX = User specified dimension (mm)
Note: Bolted connection without a joint plate

R&M Materials Handling, Inc.
4501 Gateway Blvd.
Springfield, OH 45502



www.rmhoist.com Phone: 937-328-5100 Fax: 937-325-5319

List prices FOB factory, Springfield, Ohio,
subject to change without notice.

Currency: USD
Units: METRIC
Frequency: 60 Hz

QX / QL Crane Components
END TRUCK BUMPER PRICING

Page 13
March 2, 2009

Type	Code	Bumper Length (mm)	Bumper Diameter (mm)	List Price per End Truck	Lead Time (weeks)
D1801	A	53	63	32	2-4
D2240	B	68	80	49	2-4
D2241	C	85	100	81	2-4
D2242	D	105	125	97	2-4
PUR100*100	G	100	100	162	8-10
PUR160*160	H	160	160	682	8-10
PUR200*200	I	200	200	991	8-10
PUR125*125	M	125	125	309	8-10
PUR160*240	P	240	160	650	8-10
PUR200*300	S	300	200	1430	8-10

Note: Above prices are valid only when purchased with the end truck.

R&M Materials Handling, Inc.
4501 Gateway Blvd.
Springfield, OH 45502



www.rmhoist.com

List prices FOB factory, Springfield, Ohio,
subject to change without notice.
Phone: 937-328-5100 Fax: 937-325-5319

Currency: USD
 Units: METRIC
 Frequency: 60 Hz

QX / QL Crane Components

Page 14
 March 2, 2009

BRIDGE DRIVE PRICING

Type	Motor Code	Inverter Motor	Approx. weight/ drive (kg)	Motor kW	Synch motor speed (rpm)	Nominal motor current @ 460V	List Price	Lead Time (weeks)
DS3	MF06LA104		20	0.55 / 0.12	3600/900	1.3	1254	2-4
DS3	MF06LA20P	x	20	0.75	3600	2.1	1099	2-4
DS3	MF07LA104		19	0.30 / 0.07	3600/900	1.3	1308	2-4
DS3	MF07LB104		20	0.55 / 0.13	3600/900	1.6	1308	2-4
DS3	MF06LA100	x	20	0.65	4800	1.3	1099	2-4
DS3	MF06LA200	x	20	0.55	3600	1.8	1013	2-4
DS3	MF06MA100	x	20	0.45	4800	2.1	991	2-4
DS3	MF06MA200	x	20	0.37	3600	1.2	902	2-4
DS3	MF07LA100	x	19	0.30	3600	1.0	1110	2-4
DS3	MF07LA200	x	19	0.30	1800	1.0	1110	8-10
DS3	MF07LB100	x	20	0.55	3600	1.3	1164	2-4
DS3	MF07ZC100	x	22	0.90	3600	1.9	1386	8-10
DS4	MF06LA104		20	0.55 / 0.12	3600/900	1.3	1760	2-4
DS4	MF06LA20P	x	20	0.75	3600	2.1	1598	2-4
DS4	MF07ZC104		22	0.75 / 0.18	3600/900	1.9	1719	8-10
DS4	MF06LA100	x	20	0.65	4800	2.1	1598	2-4
DS4	MF06LA200	x	20	0.55	3600	1.8	1598	2-4
DS4	MF06LB100	x	20	1.10	4800	2.9	1841	2-4
DS4	MF06LB200	x	20	1.10	3600	2.9	1801	2-4
DS4	MF06MA100	x	20	0.45	4800	2.1	1516	2-4
DS4	MF06MA200	x	20	0.37	3600	1.2	1422	2-4
DS4	MF07LB100	x	20	0.55	3600	1.3	1435	2-4
DS4	MF07LB200	x	20	0.55	1800	1.6	1435	2-4
DS4	MF07ZC100	x	22	0.90	3600	1.9	1652	2-4



R&M Materials Handling, Inc.
 4501 Gateway Blvd.
 Springfield, OH 45502

www.rmhoist.com

List prices FOB factory, Springfield, Ohio,
 subject to change without notice.

Phone: 937-328-5100 Fax: 937-325-5319

Currency: USD
 Units: METRIC
 Frequency: 60 Hz

QX / QL Crane Components

Page 15
 March 2, 2009

BRIDGE DRIVE PRICING

Type	Motor Code	Inverter Motor	Approx. weight/ drive (kg)	Motor kW	Synch motor speed (rpm)	Nominal motor current @ 460V	List Price	Lead Time (weeks)
GEK1	MF06LA104			0.55 / 0.12	3600/900	1.3	956	8-10
GEK1	MF06LA20P	x		0.75	3600	2.1	801	8-10
GEK1	MF06MA104			0.37 / 0.07	3600 / 900	0.9	758	8-10
GEK1	MF06LA100	x		0.65	4800	2.1	801	8-10
GEK1	MF06LA200	x		0.55	3600	1.8	715	8-10
GEK1	MF06MA100	x		0.45	4800	2.1	693	8-10
GEK1	MF06MA200	x		0.37	3600	1.2	604	8-10
GEK2	MF06LA104			0.55 / 0.12	3600/900	1.3	1034	2-4
GEK2	MF06LA20P	x		0.75	3600	2.1	869	2-4
GEK2	MF06MA104			0.37 / 0.07	3600 / 900	0.9	826	2-4
GEK2	MF06LA100	x		0.65	4800	2.1	869	2-4
GEK2	MF06LA200	x		0.55	3600	1.8	780	2-4
GEK2	MF06MA100	x		0.45	4800	2.1	755	2-4
GEK2	MF06MA200	x		0.37	3600	1.2	663	2-4
GES3	MF06LA104		20	0.55 / 0.12	3600 / 900	1.3	1254	2-4
GES3	MF06LA20P	x	20	0.75	3600	2.1	1099	2-4
GES3	MF06MA104		20	0.37 / 0.07	3600 / 900	0.9	1056	2-4
GES3	MF06LA100	x	20	0.65	4800	2.1	1099	2-4
GES3	MF06LA200	x	20	0.55	3600	1.8	1013	2-4
GES3	MF06MA100	x	20	0.45	4800	2.1	991	2-4
GES3	MF06MA200	x	20	0.37	3600	1.2	1013	2-4



R&M Materials Handling, Inc.
 4501 Gateway Blvd.
 Springfield, OH 45502

www.rmhoist.com

List prices FOB factory, Springfield, Ohio,
 subject to change without notice.
 Phone: 937-328-5100 Fax: 937-325-5319

Currency: USD
 Units: METRIC
 Frequency: 60 Hz

QX / QL Crane Components

Page 16
 March 2, 2009

BRIDGE DRIVE PRICING

Type	Motor Code	Inverter Motor	Approx. weight/ drive (kg)	Motor kW	Synch motor speed (rpm)	Nominal motor current @ 460V	List Price	Lead Time (weeks)
GES4	MF06LA104		30	0.55 / 0.12	3600 / 900	1.3	1497	2-4
GES4	MF06LA20P	x	30	0.75	3600	2.1	1408	2-4
GES4	MF06MA104		30	0.37 / 0.07	3600 / 900	0.9	1297	2-4
GES4	MF07X-104		30	0.90 / 0.20	3600 / 900	2.7	1606	2-4
GES4	MF06LA100	x	30	0.65	4800	2.1	1343	2-4
GES4	MF06LA200	x	30	0.55	3600	1.8	1343	8-10
GES4	MF06LB100	x	30	1.1	4800	2.9	1584	8-10
GES4	MF06LB200	x	30	1.10	3600	2.9	1541	2-4
GES4	MF06MA100	x	30	0.45	4800	2.1	1254	8-10
GES4	MF06MA200	x	30	0.37	3600	1.2	1167	8-10
GES5	MF07X-104		37	0.90 / 0.20	3600/900	2.7	2223	8-10
GES5	MF10M-104		40	1.50 / 0.35	3600/900	3	2421	8-10
GES5	MF06LB100	x	37	1.10	4800	2.9	2155	8-10
GES5	MF06LB200	x	37	1.10	3600	2.9	2134	8-10
GES5	MF07XA100	x	37	1.80	4800	4.3	2310	8-10
GES5	MF07XA200	x	37	1.80	3600	3.9	2464	8-10
GES5	MF07XB100	x	37	3.00	4800	7.9	2310	8-10
GES5	MF07XB200	x	37	2.50	3600	6.5	2383	8-10



R&M Materials Handling, Inc.
 4501 Gateway Blvd.
 Springfield, OH 45502

www.rmhoist.com

List prices FOB factory, Springfield, Ohio,
 subject to change without notice.
 Phone: 937-328-5100 Fax: 937-325-5319

Currency: USD
 Units: METRIC
 Frequency: 60 Hz

QX Crane Components

BRIDGE PANEL PRICING

Page 17
 March 2, 2009

For use with two-speed hoist control and one hoist on bridge

Type	Number of Motors for Hoisting	Max. kW of each Hoist Motor	Number of Hoists on Bridge	List Price - See Note!			Lead Time (weeks)
				208/230 volt	460 volt	575 volt	
BPPX-1	1	1.8	1	991 ⁽¹⁾	842	991	2-4
BPR1-1	1	0.9	1	1102	937	1102	2-4
BPP1-1	1	2.2	1	1102	937	1102	2-4
BPP2-1	1	4.3	1	1102	937	1102	2-4
BPP3-1	1	5.4	1	1102	937	1102	2-4
BPP4-1	1	9	1	1242	1056	1242	8-10
BPP5-1	1	11	1	1453	1235	1453	2-4
BPP6-1	1	18	1	1822 ⁽¹⁾	1549	1822	2-4
BPP7-1	1	21	1	2485	2112	2485	8-10
BPP8-1	1	25	1	2787	2369	2787	8-10
BP2P6-1	2	18	1	3074	2613	3074	8-10
BP2P7-1	2	25	1	4173	3547	4173	8-10

Prices are subject to change depending on the actual crane specification. To get the most accurate bridge panel and inverter prices, use R&M's QuoteMaster[®] program.

Includes disconnect switch, mainline contactor, control voltage transformer, and autotransformer for the inverter controls as needed. (Autotransformer is needed when the power supply voltage is something other than 460-3-60.)

⁽¹⁾ Lead time is 8-10 weeks.

NOTE!

The above bridge panel prices do not include the price for the bridge inverter. The bridge inverter price must be added separately. See Bridge Inverter Pricing page.



R&M Materials Handling, Inc.
 4501 Gateway Blvd.
 Springfield, OH 45502

www.rmhoist.com

List prices FOB factory, Springfield, Ohio,
 subject to change without notice.
 Phone: 937-328-5100 Fax: 937-325-5319

Currency: USD
 Units: METRIC
 Frequency: 60 Hz

QX Crane Components

BRIDGE PANEL PRICING

Page 18
 March 2, 2009

For use with two-speed hoist control & two equal-capacity hoists on bridge

Type	Number of Motors for Hoisting	Max. kW of each Hoist Motor	Number of Hoists on Bridge	List Price - See Note!			Lead Time (weeks)
				208/230 volt	460 volt	575 volt	
BPR1-2	1	1.1	2	1575 ⁽¹⁾	1338	1575	2-4
BPP1-2	1	2.2	2	1575 ⁽¹⁾	1338	1575	2-4
BPP2-2	1	4.3	2	1575 ⁽¹⁾	1338	1575	2-4
BPP3-2	1	5.4	2	1575 ⁽¹⁾	1338	1575	2-4
BPP4-2	1	9	2	1775	1509	1775	8-10
BPP5-2	1	11	2	2075 ⁽¹⁾	1764	2075	2-4
BPP6-2	1	18	2	2603	2213	2603	8-10
BPP7-2	1	21	2	3550	3017	3550	8-10
BPP8-2	1	25	2	3982	3385	3982	8-10
BP2P6-2	2	18	2	4382	3733	4392	8-10
BP2P7-2	2	25	2	5962	5067	5962	8-10

The above panels include tandem hoist control relays to allow separate or combined hoist operation (1, 1+2, 2)

Prices are subject to change depending on the actual crane specification. To get the most accurate bridge panel and inverter prices, use R&M's QuoteMaster[®] program.

Includes disconnect switch, mainline contactor, control voltage transformer, and autotransformer for the inverter controls as needed. (Autotransformer is needed when the power supply voltage is something other than 460-3-60.)

⁽¹⁾ Lead time is 8-10 weeks.

NOTE!

The above bridge panel prices do not include the price for the bridge inverter. The bridge inverter price must be added separately. See Bridge Inverter Pricing page.

R&M Materials Handling, Inc.
 4501 Gateway Blvd.
 Springfield, OH 45502



www.rmhoist.com

List prices FOB factory, Springfield, Ohio,
 subject to change without notice.

Phone: 937-328-5100 Fax: 937-325-5319

Currency: USD
 Units: METRIC
 Frequency: 60 Hz

QX Crane Components

BRIDGE PANEL PRICING

Page 19
 March 2, 2009

For use with ControlMaster Plus hoist inverter

Type	Number of Motors for Hoisting	Max. kW of each Hoist Motor	Number of Hoists on Bridge	List Price - See Note!			Lead Time (weeks)
				208/230 volt	460 volt	575 volt	
BPT1-1	1	2.2	1	2533	2153	2533	8-10
BPT2-1	1	4.3	1	2533	2153	2533	8-10
BPT3-1	1	5.4	1	2533	2153	2533	8-10
BPT4-1	1	9	1	3823	3249	3823	8-10
BPT5-1	1	11	1	4619	3926	4619	8-10
BPT6-1	1	18	1	4874	4143	4874	8-10
BPT7-1	1	21	1	5511	4684	5511	8-10
BPT8-1	1	27	1	6180	5253	6180	8-10
BPT9-1	1	34	1	6849	5822	6849	8-10
BPTA-1	1	42	1	7741	6580	7741	8-10
BP2T6-1	2	18	1	7231	6147	7231	8-10
BP2T7-1	2	21	1	8346	7094	8346	8-10
BP2T8-1	2	27	1	10720	9101	10720	8-10
BP2T9-1	2	34	1	12553	10660	12553	8-10

Prices are subject to change depending on the actual crane specification. To get the most accurate bridge panel and inverter prices, use R&M's QuoteMaster[®] program.

Includes disconnect switch, mainline contactor, control voltage transformer, and autotransformer for the inverter controls as needed. (Autotransformer is needed when the power supply voltage is something other than 460-3-60.)

NOTE!

The above bridge panel prices do not include the price for the bridge inverter. The bridge inverter price must be added separately. See Bridge Inverter Pricing page.



R&M Materials Handling, Inc.
 4501 Gateway Blvd.
 Springfield, OH 45502

www.rmhoist.com

List prices FOB factory, Springfield, Ohio,
 subject to change without notice.
 Phone: 937-328-5100 Fax: 937-325-5319

Currency: USD
 Units: METRIC
 Frequency: 60 Hz

QX Crane Components

BRIDGE PANEL PRICING

Page 20
 March 2, 2009

For use with ControlMaster Plus hoist inverter & two equal-capacity hoists on bridge

Type	Number of Motors for Hoisting	Max. kW of each Hoist Motor	Number of Hoists on Bridge	List Price - See Note!			Lead Time (weeks)
				208/230 volt	460 volt	575 volt	
BPT1-2	1	2.2	2	5065	4305	5065	8-10
BPT2-2	1	4.3	2	5065	4305	5065	8-10
BPT3-2	1	5.4	2	6584	5597	6584	8-10
BPT4-2	1	9	2	7645	6499	7645	8-10
BPT5-2	1	11	2	9239	7853	9239	8-10
BPT6-2	1	18	2	9748	8285	9748	8-10
BPT7-2	1	21	2	11022	9369	11022	8-10
BPT8-2	1	27	2	12361	10506	12361	8-10
BPT9-2	1	34	2	13698	11504	13698	8-10
BPTA-2	1	42	2	15481	13160	15481	8-10
BP2T6-2	2	18	2	14462	12293	14462	8-10
BP2T7-2	2	21	2	16692	14189	16692	8-10
BP2T8-2	2	27	2	18666	16142	18666	8-10
BP2T9-2	2	34	2	21445	18920	21445	8-10

The above panels include tandem hoist control relays to allow separate or combined hoist operation (1, 1+2, 2)

Prices are subject to change depending on the actual crane specification. To get the most accurate bridge panel and inverter prices, use R&M's QuoteMaster[®] program.

Includes disconnect switch, mainline contactor, control voltage transformer, and autotransformer for the inverter controls as needed. (Autotransformer is needed when the power supply voltage is something other than 460-3-60.)

NOTE!

The above bridge panel prices do not include the price for the bridge inverter. The bridge inverter price must be added separately. See Bridge Inverter Pricing page.



R&M Materials Handling, Inc.
 4501 Gateway Blvd.
 Springfield, OH 45502

www.rmhoist.com

List prices FOB factory, Springfield, Ohio,
 subject to change without notice.
 Phone: 937-328-5100 Fax: 937-325-5319

Currency: USD
 Units: METRIC
 Frequency: 60 Hz

QL Crane Components

BRIDGE PANEL PRICING

Page 21
 March 2, 2009

For use with LoadMate electric chain hoist with contactor hoist control

Type	Max. kW of each Hoist Motor	Number of Hoists on Bridge	List Price - See Note!			Lead Time (weeks)
			208/230 volt	460 volt	575 volt	
BPC1-1	1.1	1	1102	937	1102	2-4
BPC2-1	2.1	1	1102	937	1102	2-4
BPC3-1	4.2	1	1102	937	1102	2-4
BPC1-2	1.1	2	1575 ⁽¹⁾	1338	1575	2-4
BPC2-2	2.1	2	1575 ⁽¹⁾	1338	1575	2-4
BPC3-2	4.2	2	1575 ⁽¹⁾	1338	1575	2-4

For use with LoadMate electric chain hoist with inverter hoist control

BPV1-1	1.1	1	NA	NA	NA	---
BPV2-1	2.2	1	POA ⁽¹⁾	937	POA ⁽¹⁾	2-4
BPV3-1	4.2	1	NA	NA	NA	---
BPV1-2	1.1	2	NA	NA	NA	---
BPV2-2	2.2	2	POA ⁽¹⁾	1338	POA ⁽¹⁾	2-4
BPV3-2	4.2	2	NA	NA	NA	---

The above BPxx-2 panels include tandem hoist control relays to allow separate or combined hoist operation (I, I+II, II)

Prices are subject to change depending on the actual crane specification. To get the most accurate bridge panel and inverter prices, use R&M's QuoteMaster[®] program.

Includes disconnect switch, mainline contactor, control voltage transformer, and autotransformer for the inverter controls as needed. (Autotransformer is needed when the power supply voltage is something other than 460-3-60.)

⁽¹⁾ Lead time is 8-10 weeks.

NOTE!

The above bridge panel prices do not include the price for the bridge inverter. The bridge inverter price must be added separately. See Bridge Inverter Pricing page.


R&M Materials Handling, Inc.
 4501 Gateway Blvd.
 Springfield, OH 45502



www.rmhoist.com

List prices FOB factory, Springfield, Ohio,
 subject to change without notice.

Phone: 937-328-5100 Fax: 937-325-5319

Currency: USD Units: METRIC Frequency: 60 Hz	QX / QL Crane Components BRIDGE INVERTER PRICING		Page 22 March 2, 2009	
Type	Maximum output current		List Price	Lead Time (weeks)
	Nominal Current (A) @ 460 Volts	Starting Current (A) @ 460 Volts		
ControlMaster Select Inverter				
CMST 002F	5.1	7.7	1760	2-4
CMST 003F	8	12	2031	2-4
CMST 004F	10	15	2302	2-4
CMST 005F	13	20	3114	8-10
CMST 007F	18	27	3655	8-10
CMST 011F	24	36	4739	8-10
CMST 015F	32	48	5415	8-10
CMST 018F	42	63	6742	8-10
CMST 022F	48	72	7744	8-10
ControlMaster CMXC Inverter				
CMXC 022F	5.0	7.5	460	2-4
Above prices are valid only when purchased with the bridge panel.				
R&M Materials Handling, Inc. 4501 Gateway Blvd. Springfield, OH 45502		www.rmhoist.com	List prices FOB factory, Springfield, Ohio, subject to change without notice. Phone: 937-328-5100 Fax: 937-325-5319	

Currency: USD
 Units: METRIC
 Frequency: 60 Hz

QX / QL Crane Components

PUSHBUTTON PENDANT PRICING

Page 23
 March 2, 2009

Type	ON / OFF	Hoist	Trolley	Bridge	Selector Switch	List Price	Lead Time (weeks)
PBR style Push Button Pendant							
PBR042001_00-N...PE20	X	2	0	0	0	406	2-4
PBR082201_00-N...PE20	X	2	2	0	0	406	2-4
PBR082221_00-N...PE30	X	2	2	2	0	406	2-4
PBR122221_V2-N...PE30	X	2	2	2	V2	542	2-4
PBR122221_V3-N...PE30	X	2	2	2	V3	542	2-4
PBR122221_00-N...PE3E	X	2x2	2x2	2	0	1590	2-4
PD style Push Button Pendant							
PD06-2001NC00-...H0	X	2	0	0	0	555	2-4
PD08-2201NC00-...H0	X	2	2	0	0	555	2-4
PD08-2221NC00-...P0	X	2	2	2	0	555	2-4
PD12-2221NCV2-...P0	X	2	2	2	V2	704	2-4
PD12-2221NCV3-...P0	X	2	2	2	V3	704	2-4
PD12-2221NC00-...PE	X	2x2	2x2	2	0	1696	2-4
Standby Heater for Pendant Station						135	8-10

Prices apply only when ordered with crane components or hoist.

0 = Not included
 2 = Two-speed
 V2 = 2 position selection (1 or 2)
 V3 = 3 position selection (1, 1+2, 2)
 X = Included
 PE2 = plug on SX hoist
 PE3 = plug on the moveable festoon trolley (on bridge)

Included:
 Pendant cable for specified lift up to 15 m max.
 Pushbutton pendant station
 Plug

R&M Materials Handling, Inc.
 4501 Gateway Blvd.
 Springfield, OH 45502



www.rmhoist.com

List prices FOB factory, Springfield, Ohio,
 subject to change without notice.
 Phone: 937-328-5100 Fax: 937-325-5319

Currency: USD
 Units: METRIC
 Frequency: 60 Hz

QX / QL Crane Components
RACON II RADIO REMOTE CONTROL PRICING

Page 24
 March 2, 2009

Type	Control Method	Hoist	Trolley	Bridge	Selector Switch	List Price	Lead Time (weeks)
Single system for hoist							
RaConII RH110.....	Pushbutton	2	2	---	none	1939	2-4
Single system for crane							
RaConII RS110.....	Pushbutton	2	2	2	none	2061	2-4
RaConII RF130.....	Pushbutton	2	2	2	none	2283	2-4
RaConII RF13S.....	Pushbutton	2	2	2	V3	2391	2-4
Spare transmitter (when purchased with new system - add 25% to radio list price)						+ 0.25 x list price	

Included:

2 = Two-speed

V3 = 3 position selection (1, 1+2, 2)

Main contactor On-button

Emergency Stop

Transmitter with battery and backup battery

Receiver & connection cable with ready-to-go plugs

Battery charger



R&M Materials Handling, Inc.
 4501 Gateway Blvd.
 Springfield, OH 45502

www.rmhoist.com

List prices FOB factory, Springfield, Ohio,
 subject to change without notice.

Phone: 937-328-5100 Fax: 937-325-5319

Currency: USD
 Units: METRIC
 Frequency: 60 Hz

QX / QL Crane Components

RACON RADIO REMOTE CONTROL PRICING

Page 25
 March 2, 2009

Type	Control Method	Hoist	Trolley	Bridge	Selector Switch	List Price	Lead Time (weeks)
------	----------------	-------	---------	--------	-----------------	------------	-------------------

Single system for a crane

RaCon508MI_0...00ST	Pushbutton	2	2	none	none	2567	8-10
RaCon516MI_0...00ST	Pushbutton	2	2	2	none	3038	8-10
RaCon516MI_S...00ST	Pushbutton	2	2	2	V2;V3	3344	8-10
RaCon516SP_0...00ST	Joysticks	2	2	2	none	4887	8-10
RaCon516SP_S...00ST	Joysticks	2	2	2	V2;V3	5101	8-10

Tandem systems for two cranes

RaCon516MI_0...T1ST	Pushbutton	2	2	2	none	6872	8-10
RaCon516SP_0...T1ST	Joysticks	2	2	2	none	9759	8-10

Spare transmitter (when purchased with new system - add **40%** to radio list price) **+ 0.40 x list price**

Included:

- | | |
|---------------------------------------|--|
| 2 = Two-speed | Main contactor On-button |
| V2 = 2 position selection (1 or 2) | Emergency Stop |
| V3 = 3 position selection (1, 1+2, 2) | Key Switch |
| | Transmitter with battery and backup battery |
| | Receiver & connection cable with ready-to-go plugs |
| | Battery charger |

R&M Materials Handling, Inc.
 4501 Gateway Blvd.
 Springfield, OH 45502



www.rmhoist.com

List prices FOB factory, Springfield, Ohio,
 subject to change without notice.

Phone: 937-328-5100 Fax: 937-325-5319

Currency: USD
Units: METRIC
Frequency: 60 Hz

QX / QL Crane Components

CRANE COMPONENT OPTIONS PRICING

Page 26
March 2, 2009

	Note	Code	Lead Time (weeks)	List Price
Thermal protection for bridge motor	B,C	BM08	8-10	306
IP66 Protection for bridge motor	C	BM09	8-10	306
Class H insulation for bridge motor	C	BM11	8-10	260
Manual release for bridge motor brake	B,C	BRA06	8-10	203
Magnetic limit switch for bridge		BT10	8-10	609
Photo detector anti-collision device for an existing crane	B,G	BT20	2-4	747
Ultrasonic sensors anti-collision device for an existing crane	B,G	BT20	8-10	2640
Rubber cables for hoist power supply (% of standard festoon package)		CBL07	8-10	+ 28%
Cable tray component package		CBL08	8-10	690
Bumper extensions for bridge end trucks (One pair)		DES44	8-10	1110
Insulation for bridge panel	B,G	EL23	8-10	Use QuoteMaster
Thermostat controlled heating	B,G	EL24	8-10	Use QuoteMaster
Bridge panel light - operated by door	G	EL25	8-10	734
Bridge panel light - manually operated	G	EL25	8-10	579
Rain cover for bridge panel	G	EL26	8-10	273
Cooling device per bridge panel - AC - Air conditioner	B,G	EL29	8-10	9263
Cooling device per bridge panel - CE - Cooling element	B,G	EL29	8-10	2970
Cooling device per bridge panel - CH - Air channel	B,G	EL29	8-10	7059
Cooling device per bridge panel - CHF - Air channel with filter	B,G	EL29	8-10	8500
Horn DBA 108		ELE05	2-4	271
All electrics in bridge panel	B,G	ELE10	8-10	Use QuoteMaster
Plug-in connector for pendant cable		ELE16	2-4	N.C.
Non-standard voltage/frequency for crane package	B	ELE21	8-10	509
Pliotex type wire marker		ELE48	8-10	311
Provision for crane lights (Price/light, 6 lights max./crane)	B,G	ELE61	8-10	398

Note A: List price = Regular list price x 1.65

Note B: Refer to hoist technical guide for details/restrictions

Note C: Per motor

Note D: Contact factory

Note E: Add HoistMonitor HS11 to hoist

Note F: Add HoistMonitor Elite HS13 to each hoist

Note G: Not available for chain hoist cranes

Note H: Price per direction



R&M Materials Handling, Inc.
4501 Gateway Blvd.
Springfield, OH 45502

www.rmhoist.com

List prices FOB factory, Springfield, Ohio,
subject to change without notice.

Phone: 937-328-5100 Fax: 937-325-5319

Currency: USD
 Units: METRIC
 Frequency: 60 Hz

QX / QL Crane Components

CRANE COMPONENT OPTIONS PRICING

Page 27
 March 2, 2009

	Note	Code	Lead Time (weeks)	List Price
Hoist operated limit switch that trips mainline contactor	B,G	ELE64	8-10	433
Warning indication for traveling movement		ELE98	---	---
Flashing light - activated through crane traveling			2-4	273
Flashing light - activated through crane/trolley traveling			2-4	273
Flashing light - activated through trolley traveling			2-4	273
Warning sound - activated through crane traveling			2-4	273
Warning sound - activated through crane/trolley traveling			2-4	273
Warning sound - activated through trolley traveling			2-4	273
Flashing Light/Warning sound - activated through crane traveling			2-4	336
Flashing Light/Warning sound - activated through crane/trolley traveling			2-4	336
Flashing Light/Warning sound - activated through trolley traveling			2-4	336
Special lubrication for gears	B	GE21	8-10	100
One-step bridge travel limit switch (Slowdown)		LIM10	2-4	STD
One-step bridge travel limit switch (Stop)		LIM11	2-4	68
Two-step bridge travel limit switch (Slowdown+stop)		LIM12	2-4	447
Standby heater for bridge motor	C	MOT17	8-10	366
Rain cover for bridge motor	C,G	MOT18	8-10	135
Photo detector anti-collision device	B,G,H	OTH08	---	---
Stop operation - for one direction			2-4	747
Slowdown operation - for one direction			2-4	747
Slowdown & stop operation - for one direction			2-4	1495
Ultrasonic sensors anti-collision device	B,G,H	OTH08	---	---
Stop operation - for one direction			8-10	2640
Slowdown operation - for one direction			8-10	2640
Slowdown & stop operation - for one direction			8-10	5280

Note A: List price = Regular list price x 1.65

Note B: Refer to hoist technical guide for details/restrictions

Note C: Per motor

Note D: Contact factory

Note E: Add HoistMonitor HS11 to hoist

Note F: Add HoistMonitor Elite HS13 to each hoist

Note G: Not available for QL chain hoist cranes

Note H: Price per direction



R&M Materials Handling, Inc.
 4501 Gateway Blvd.
 Springfield, OH 45502

www.rmhoist.com

List prices FOB factory, Springfield, Ohio,
 subject to change without notice.

Phone: 937-328-5100 Fax: 937-325-5319

Currency: USD
 Units: METRIC
 Frequency: 60 Hz

QX / QL Crane Components

CRANE COMPONENT OPTIONS PRICING

Page 28
 March 2, 2009

	Note	Code	Lead Time (weeks)	List Price
Plug kit + pigtail for radio controls (By others)			2-4	131
Plug kit for radio controls (By others)			2-4	53
Rail sweeps - wood (Price per end truck)	B	OTH21	8-10	793
Rail sweeps - steel (Price per end truck)	B	OTH21	8-10	2488
Storm locks (Price per end truck)	B	OTH22	8-10	1267
Anti-jump catches for end truck (Price per end truck)	B	OTH24	8-10	688
Patented track wheels for end truck (Price per 8 wheels)		OTH26	2-4	1354
Crane number sticker		OTH28	2-4	68
Crane data plate		OTH30	2-4	95
Steel wheels for under running end trucks (Price per 8 wheels)			8-10	1169
IP55 stainless steel bridge panel adder (% of std bridge panel price)	A,B,G	PAN04	8-10	+ 45%
IP66 protection rating for stainless steel bridge panel	A,B,G	PAN07	8-10	+ 65%
Standby heater for bridge panel	G	PAN08	8-10	217
Plug source in bridge panel (1pc, 115v, 16A) - less plug outlet	G	PAN17	8-10	1628
Standby heater for pendant	G	PEN03	8-10	135
Contactora bridge control (Two-speed)		PRI01	8-10	839
Longer chain for trolley tow arm		PS05	2-4	68

Note A: List price = Regular list price x 1.65

Note B: Refer to hoist technical guide for details/restrictions

Note C: Per motor

Note D: Contact factory

Note E: Add HoistMonitor HS11 to hoist

Note F: Add HoistMonitor Elite HS13 to each hoist

Note G: Not available for QL chain hoist cranes

Note H: Price per direction



R&M Materials Handling, Inc.
 4501 Gateway Blvd.
 Springfield, OH 45502

www.rmhoist.com

List prices FOB factory, Springfield, Ohio,
 subject to change without notice.

Phone: 937-328-5100 Fax: 937-325-5319

Currency: USD
 Units: METRIC
 Frequency: 60 Hz

QX / QL Crane Components

Page 29
 March 2, 2009

SPARE PARTS KIT PRICING

Spare Parts Packages for Bridge Panels

Hoisting Motor Size	List Price
P1, P2, P3	415
P4	458
P5, P6	633
P7	828
P8	1178

Spare part package for the bridge panel include:
 - Mainline contactor and fuses

Spare Parts Packages for Traveling Drives

Motor Size	List Price
MF06 (with DC brake)	456
MF07	503

Spare part package for the drives include:
 - D.C. brake repair set - 2 pcs
 - D.C. brake rectifier - 2 pcs

Spare Parts Packages - Traveling Inverters

Inverter Size	List Price
CMXC 007	568
CMXC 022	785
CM Select 002	2017
CM Select 003	2544
CM Select 004	3070

Spare Parts Packages for Traveling Drives

Motor Size	List Price
MF06 (with Compact brake)	864

Spare part package for the drives include:
 - Friction disc kit

Prices are valid only when purchased with a components package.

Additional discounting beyond your standard R&M discount is not available on spare parts kits.

R&M Materials Handling, Inc.
 4501 Gateway Blvd.
 Springfield, OH 45502



www.rmhoist.com

List prices FOB factory, Springfield, Ohio,
 subject to change without notice.

Phone: 937-328-5100 Fax: 937-325-5319