

Sales Policy

QX / QL Crane Components

March 2, 2009

SALES POLICY

Terms and Conditions of Sale

All sales are subject to the R&M Materials Handling, Inc. Standard Terms and Conditions of Sale (Revision 101707), a copy of which is available at www.rmhoist.com or upon request from your R&M Materials Handling, Inc. customer service/sales representatives and the terms of which are incorporated as if fully rewritten herein.

Currency: USD

R&M Materials Handling, Inc.
4501 Gateway Blvd.
Springfield, OH 45502



www.rmhoist.com

List prices FOB factory, Springfield, Ohio,
subject to change without notice.
Phone: 937-328-5100 Fax: 937-325-5319

This page left intentionally blank.

Currency: USD
Units: US
Frequency: 60 Hz

QX / QL Crane Components

March 2, 2009

QX Crane Components for Spacemaster® SX electric wire rope hoists

QL Crane Components for LoadMate® electric chain hoists

Table of Contents

Description	Page No.
Under Running End Truck Pricing	1
Top Running End Truck Pricing	6
End Truck Joint Plate Pricing	11
End Truck Bumper Pricing	13
Bridge Drive Pricing	14
QX Bridge Panel Pricing	17
QL Bridge Panel Pricing	21
Bridge Inverter Pricing	22
Pushbutton Pendant Pricing	23
RaCon Series II Radio Control System Pricing	24
RaCon Radio Control System Pricing	25
Crane Component Options Pricing	26
Spare Parts Packages Pricing	29

Note: Festoon package selection and pricing is available through R&M's **QuoteMaster®** program.

R&M Materials Handling, Inc.
4501 Gateway Blvd.
Springfield, OH 45502



www.rmhoist.com

List prices FOB factory, Springfield, Ohio,
subject to change without notice.

Phone: 937-328-5100 Fax: 937-325-5319

Currency: USD
 Units: US
 Frequency: 60 Hz

QX/QL Crane Components
 UNDER RUNNING END TRUCK PRICING

Page 1
 March 2, 2009

Type	Runway Beam Flange Width Range (in)	Whl. Dia.	Wheel Base	Approx. weight/trk. (lbs)	Max. Static Corner Load (lbs)	List Price per End Truck	Lead Time (weeks)
RU08-12	2 7/8" - 4 3/4"	3 5/32"	3'-11 1/4"	243	4891	1428	8-10
	4 3/4" - 6 5/8"						
	6 5/8" - 8 1/2"						
	8 1/2" - 10 5/16"						
	10 5/8" - 12 5/16"						
RU08-14	2 7/8" - 4 3/4"	3 5/32"	4'-7 1/8"	258	4891	1470	8-10
	4 3/4" - 6 5/8"						
	6 5/8" - 8 1/2"						
	8 1/2" - 10 5/16"						
	10 5/8" - 12 5/16"						
RU08-18	2 7/8" - 4 3/4"	3 5/32"	5'-10 7/8"	289	4891	1512	2-4
	4 3/4" - 6 5/8"						
	6 5/8" - 8 1/2"						
	8 1/2" - 10 5/16"						
	10 5/8" - 12 5/16"						
RU08-23	2 7/8" - 4 3/4"	3 5/32"	7'-6 9/16"	326	4500	1596	2-4
	4 3/4" - 6 5/8"						
	6 5/8" - 8 1/2"						
	8 1/2" - 10 5/16"						
	10 5/8" - 12 5/16"						

Note: Maximum Static Corner Load is based on CMAA Class C duty at 100 fpm.

RU/RH/UT style end truck is a 8-wheel end truck - see outline drawing.

Specify the flange width of the runway beam when ordering under running end trucks

Drives, joint plates, and bumpers are sold separately.

End Truck	Suitable Bridge Drive
UT16	DS3, DS4
RU08, RU10, RH10	GEK



R&M Materials Handling, Inc.
 4501 Gateway Blvd.
 Springfield, OH 45502

www.rmhoist.com

List prices FOB factory, Springfield, Ohio,
 subject to change without notice.

Phone: 937-328-5100 Fax: 937-325-5319

Currency: USD
 Units: US
 Frequency: 60 Hz

QX/QL Crane Components
 UNDER RUNNING END TRUCK PRICING

Page 2
 March 2, 2009

Type	Runway Beam Flange Width Range (in)	Whl. Dia.	Wheel Base	Approx. weight/trk. (lbs)	Max. Static Corner Load (lbs)	List Price per End Truck	Lead Time (weeks)
RU08-28	2 7/8" - 4 3/4"	3 5/32"	9'-2 1/4"	364	3913	1680	8-10
	4 3/4" - 6 5/8"						
	6 5/8" - 8 1/2"						
	8 1/2" - 10 5/16"						
	10 5/8" - 12 5/16"						
RU10-12	3 1/4" - 5 1/8"	3 15/16"	3'-11 1/4"	355	9000	1853	8-10
	5 1/8" - 7"						
	7" - 8 15/16"						
	8 15/16" - 10 3/4"						
	10 3/4" - 12 5/8"						
RU10-14	3 1/4" - 5 1/8"	3 15/16"	4'-7 1/8"	377	9000	1901	8-10
	5 1/8" - 7"						
	7" - 8 15/16"						
	8 15/16" - 10 3/4"						
	10 3/4" - 12 5/8"						
RU10-18	3 1/4" - 5 1/8"	3 15/16"	5'-10 7/8"	421	9000	1939	2-4
	5 1/8" - 7"						
	7" - 8 15/16"						
	8 15/16" - 10 3/4"						
	10 3/4" - 12 5/8"						

Note: Maximum Static Corner Load is based on CMAA Class C duty at 100 fpm.

RU/RH/UT style end truck is a 8-wheel end truck - see outline drawing.

Specify the flange width of the runway beam when ordering under running end trucks

Drives, joint plates, and bumpers are sold separately.

End Truck	Suitable Bridge Drive
UT16	DS3, DS4
RU08, RU10, RH10	GEK



R&M Materials Handling, Inc.
 4501 Gateway Blvd.
 Springfield, OH 45502

www.rmhoist.com

List prices FOB factory, Springfield, Ohio,
 subject to change without notice.

Phone: 937-328-5100 Fax: 937-325-5319

Currency: USD
 Units: US
 Frequency: 60 Hz

QX/QL Crane Components
 UNDER RUNNING END TRUCK PRICING

Page 3
 March 2, 2009

Type	Runway Beam Flange Width Range (in)	Whl. Dia.	Wheel Base	Approx. weight/trk. (lbs)	Max. Static Corner Load (lbs)	List Price per End Truck	Lead Time (weeks)
RU10-23	3 1/4" - 5 1/8"	3 15/16"	7'-9 9/16"	478	9000	1978	2-4
	5 1/8" - 7"						
	7" - 8 15/16"						
	8 15/16" - 10 3/4"						
	10 3/4" - 12 5/8"						
RU10-28	3 1/4" - 5 1/8"	3 15/16"	9'-2 1/4"	606	9000	2027	2-4
	5 1/8" - 7"						
	7" - 8 15/16"						
	8 15/16" - 10 3/4"						
	10 3/4" - 12 5/8"						
RU10-32	3 1/4" - 5 1/8"	3 15/16"	10'-6"	659	8609	2070	8-10
	5 1/8" - 7"						
	7" - 8 15/16"						
	8 15/16" - 10 3/4"						
	10 3/4" - 12 5/8"						
RU10-35	3 1/4" - 5 1/8"	3 15/16"	11'-5 13/16"	701	8609	2108	8-10
	5 1/8" - 7"						
	7" - 8 15/16"						
	8 15/16" - 10 3/4"						
	10 3/4" - 12 5/8"						

Note: Maximum Static Corner Load is based on CMAA Class C duty at 100 fpm.

RU/RH/UT style end truck is a 8-wheel end truck - see outline drawing.

Specify the flange width of the runway beam when ordering under running end trucks

Drives, joint plates, and bumpers are sold separately.

End Truck	Suitable Bridge Drive
UT16	DS3, DS4
RU08, RU10, RH10	GEK



R&M Materials Handling, Inc.
 4501 Gateway Blvd.
 Springfield, OH 45502

www.rmhoist.com

List prices FOB factory, Springfield, Ohio,
 subject to change without notice.

Phone: 937-328-5100 Fax: 937-325-5319

Currency: USD
 Units: US
 Frequency: 60 Hz

QX/QL Crane Components
 UNDER RUNNING END TRUCK PRICING

Page 4
 March 2, 2009

Type	Runway Beam Flange Width Range (in)	Whl. Dia.	Wheel Base	Approx. weight/trk. (lbs)	Max. Static Corner Load (lbs)	List Price per End Truck	Lead Time (weeks)
RH10-14	3 1/4" - 5 1/8"	3 15/16"	4'-7 1/8"	628	9000	2694	8-10
	5 1/8" - 7"						
	7" - 8 15/16"						
	8 15/16" - 10 3/4"						
	10 3/4" - 12 5/8"						
RH10-18	3 1/4" - 5 1/8"	3 15/16"	5'-10 7/8"	672	9000	2729	8-10
	5 1/8" - 7"						
	7" - 8 15/16"						
	8 15/16" - 10 3/4"						
	10 3/4" - 12 5/8"						
RH10-23	3 1/4" - 5 1/8"	3 15/16"	7'-9 9/16"	727	9000	2773	8-10
	5 1/8" - 7"						
	7" - 8 15/16"						
	8 15/16" - 10 3/4"						
	10 3/4" - 12 5/8"						
RH10-28	3 1/4" - 5 1/8"	3 15/16"	9'-2 1/4"	816	9000	2816	8-10
	5 1/8" - 7"						
	7" - 8 15/16"						
	8 15/16" - 10 3/4"						
	10 3/4" - 12 5/8"						

Note: Maximum Static Corner Load is based on CMAA Class C duty at 100 fpm.

RU/RH/UT style end truck is a 8-wheel end truck - see outline drawing.

Specify the flange width of the runway beam when ordering under running end trucks

Drives, joint plates, and bumpers are sold separately.

End Truck	Suitable Bridge Drive
UT16	DS3, DS4
RU08, RU10, RH10	GEK



R&M Materials Handling, Inc.
 4501 Gateway Blvd.
 Springfield, OH 45502

www.rmhoist.com

List prices FOB factory, Springfield, Ohio,
 subject to change without notice.

Phone: 937-328-5100 Fax: 937-325-5319

Currency: USD
 Units: US
 Frequency: 60 Hz

QX/QL Crane Components
 UNDER RUNNING END TRUCK PRICING

Page 5
 March 2, 2009

Type	Runway Beam Flange Width Range (in)	Whl. Dia.	Wheel Base	Approx. weight/trk. (lbs)	Max. Static Corner Load (lbs)	List Price per End Truck	Lead Time (weeks)
UT16-12	3.9 - 7.9	6 1/4"	3'-11 1/4"	816	15652	3842	8-10
UT16-12	7.9 - 11.9	6 1/4"	3'-11 1/4"	838	15652	3842	8-10
UT16-14	3.9 - 7.9	6 1/4"	4'-7 1/8"	893	15652	3899	8-10
UT16-14	7.9 - 11.9	6 1/4"	4'-7 1/8"	915	15652	3899	8-10
UT16-18	3.9 - 7.9	6 1/4"	5'-10 7/8"	970	15652	4037	8-10
UT16-18	7.9 - 11.9	6 1/4"	5'-10 7/8"	992	15652	4037	8-10
UT16-22	3.9 - 7.9	6 1/4"	7'-2 5/8"	1058	15652	4143	2-4
UT16-22	7.9 - 11.9	6 1/4"	7'-2 5/8"	1080	15652	4143	2-4
UT16-28	3.9 - 7.9	6 1/4"	9'-2 1/4"	1190	15652	4354	8-10
UT16-28	7.9 - 11.9	6 1/4"	9'-2 1/4"	1213	15652	4354	8-10

Note: Maximum Static Corner Load is based on CMAA Class C duty at 100 fpm.

RU/RH/UT style end truck is a 8-wheel end truck - see outline drawing.

Specify the flange width of the runway beam when ordering under running end trucks

Drives, joint plates, and bumpers are sold separately.

End Truck	Suitable Bridge Drive
UT16	DS3, DS4
RU08, RU10, RH10	GEK

R&M Materials Handling, Inc.
 4501 Gateway Blvd.
 Springfield, OH 45502



www.rmhoist.com

List prices FOB factory, Springfield, Ohio,
 subject to change without notice.

Phone: 937-328-5100 Fax: 937-325-5319

Currency: USD
 Units: US
 Frequency: 60 Hz

QX/QL Crane Components
 TOP RUNNING END TRUCK PRICING

Page 6
 March 2, 2009

Type	Wheel Tread Width Range	Whl. Dia.	Wheel Base	Approx. weight/trk. (lbs)	List Price per End Truck	Lead Time (weeks)	
						S.G.	D.G.
RTL09-13	2" - 2 3/4"	3 1/2"	4'-1 1/4"	117	584	8-10	NA
RTL09-16	2" - 2 3/4"	3 1/2"	5'-3"	148	649	8-10	8-10
RTL09-20	2" - 2 3/4"	3 1/2"	6'-6 3/4"	166	735	8-10	8-10
RTN09-13	2" - 2 3/4"	3 1/2"	4'-1 1/4"	172	840	8-10	NA
RTN09-16	2" - 2 3/4"	3 1/2"	5'-3"	220	916	2-4	2-4
RTN09-20	2" - 2 3/4"	3 1/2"	6'-6 3/4"	251	993	2-4	2-4
RTN09-25	2" - 2 3/4"	3 1/2"	8'-2 7/16"	293	1069	2-4	2-4
RTN11-16	2 1/16" - 3 7/16"	4 3/8"	5'-3"	280	1070	2-4	2-4
RTN11-20	2 1/16" - 3 7/16"	4 3/8"	6'-6 3/4"	322	1130	2-4	2-4
RTN11-25	2 1/16" - 3 7/16"	4 3/8"	8'-2 7/16"	553	1200	2-4	2-4
RTN11-32	2 1/16" - 3 7/16"	4 3/8"	10'-4"	439	1298	2-4	2-4

See outline drawing for wheel load information or use R&M's **QuoteMaster**® program.
 Drives, joint plates, and bumpers are sold separately.
 Bogie end truck weight and price is for two end trucks plus connector.

End Truck	Suitable Bridge Drive
RSN09, RSN11, RTL09, RTN09, RTN11, RT14	GES3
RT20	GES3, GES4
RT25, RT32	GES4, GES5
RT50	GES5



R&M Materials Handling, Inc.
 4501 Gateway Blvd.
 Springfield, OH 45502

www.rmhoist.com

List prices FOB factory, Springfield, Ohio,
 subject to change without notice.
 Phone: 937-328-5100 Fax: 937-325-5319

Currency: USD
 Units: US
 Frequency: 60 Hz

QX/QL Crane Components

Page 7
 March 2, 2009

TOP RUNNING END TRUCK PRICING

Type	Wheel Tread Width Range	Whl. Dia.	Wheel Base	Approx. weight/trk. (lbs)	List Price per End Truck	Lead Time (weeks)	
						S.G.	D.G.
RT14-14	2" - 2 15/16"	5 1/2"	4' - 7 1/8'	256	1015	8-10	8-10
RT14-18	2" - 2 15/16"	5 1/2"	5' - 10 7/8"	298	1070	8-10	8-10
RT14-22	2" - 2 15/16"	5 1/2"	7' - 2 5/8"	337	1137	2-4	2-4
RT14-27	2" - 2 15/16"	5 1/2"	8' - 10 3/8"	390	1205	2-4	8-10
RT14-31	2" - 2 15/16"	5 1/2"	10' - 2"	430	1286	8-10	8-10
RT14-38	2" - 2 15/16"	5 1/2"	12' - 5 5/8"	503	1367	8-10	8-10
RT20-18	2 3/16" - 3 15/16"	7 7/8"	5' - 10 7/8"	509	1733	8-10	8-10
RT20-22	2 3/16" - 3 15/16"	7 7/8"	7' - 2 5/8"	573	1814	2-4	8-10
RT20-27	2 3/16" - 3 15/16"	7 7/8"	8' - 10 3/8"	655	1909	2-4	2-4
RT20-31	2 3/16" - 3 15/16"	7 7/8"	10' - 2"	719	2058	2-4	2-4
RT20-38	2 3/16" - 3 15/16"	7 7/8"	12' - 5 5/8"	831	2159	8-10	8-10
RT20B-12	2 3/16" - 3 15/16"	7 7/8"	3' - 11 1/4"	917	3669	NA	2-4
RT20B-14	2 3/16" - 3 15/16"	7 7/8"	4' - 7 1/8"	979	3845	NA	8-10
RT20B-16	2 3/16" - 3 15/16"	7 7/8"	5' - 3"	1045	3947	NA	8-10
RT20B-18	2 3/16" - 3 15/16"	7 7/8"	5' - 10 7/8"	1107	4156	NA	8-10
RT20B-20	2 3/16" - 3 15/16"	7 7/8"	6' - 6 3/4"	1235	4332	NA	8-10

See outline drawing for wheel load information or use R&M's **QuoteMaster**[®] program.

Drives, joint plates, and bumpers are sold separately.

Bogie end truck weight and price is for two end trucks plus connector.

End Truck	Suitable Bridge Drive
RSN09, RSN11, RTL09, RTN09, RTN11, RT14	GES3
RT20	GES3, GES4
RT25, RT32	GES4, GES5
RT50	GES5



R&M Materials Handling, Inc.
 4501 Gateway Blvd.
 Springfield, OH 45502

www.rmhoist.com

List prices FOB factory, Springfield, Ohio,
 subject to change without notice.

Phone: 937-328-5100 Fax: 937-325-5319

Currency: USD
 Units: US
 Frequency: 60 Hz

QX/QL Crane Components

Page 8
 March 2, 2009

TOP RUNNING END TRUCK PRICING

Type	Wheel Tread Width Range	Whl. Dia.	Wheel Base	Approx. weight/trk. (lbs)	List Price per End Truck	Lead Time (weeks)	
						S.G.	D.G.
RT25-22	2 3/16" - 3 15/16"	9 7/8"	7' - 2 5/8"	829	2572	8-10	8-10
RT25-27	2 3/16" - 3 15/16"	9 7/8"	8' - 10 3/8"	939	2816	2-4	8-10
RT25-31	2 3/16" - 3 15/16"	9 7/8"	10' - 2"	1087	3060	8-10	2-4
RT25-38	2 3/16" - 3 15/16"	9 7/8"	12' - 5 5/8"	1413	3263	8-10	8-10
RT25-45	2 3/16" - 3 15/16"	9 7/8"	14' - 9 1/8"	1501	3507	8-10	8-10
RT25-50	2 3/16" - 3 15/16"	9 7/8"	16' - 4 7/8"	1629	3831	8-10	8-10
RT25-55	2 3/16" - 3 15/16"	9 7/8"	18' - 1/2"	1755	4211	8-10	8-10
RT25B-14	2 3/16" - 3 15/16"	9 7/8"	4' - 7 1/8"	1404	6404	NA	8-10
RT25B-16	2 3/16" - 3 15/16"	9 7/8"	5' - 3"	1493	6722	NA	8-10
RT25B-18	2 3/16" - 3 15/16"	9 7/8"	5' - 10 7/8"	1581	7020	NA	8-10
RT25B-20	2 3/16" - 3 15/16"	9 7/8"	6' - 6 3/4"	1673	7338	NA	8-10
RT32-22	2 3/16" - 3 15/16"	12 5/8"	7' - 2 5/8"	1076	3980	8-10	8-10
RT32-27	2 3/16" - 3 15/16"	12 5/8"	8' - 10 3/8"	1199	4170	8-10	8-10
RT32-31	2 3/16" - 3 15/16"	12 5/8"	10' - 2"	1344	4319	8-10	2-4
RT32-38	2 3/16" - 3 15/16"	12 5/8"	12' - 5 5/8"	1616	4617	8-10	8-10
RT32-45	2 3/16" - 3 15/16"	12 5/8"	14' - 9 1/8"	1687	4752	8-10	8-10
RT32-50	2 3/16" - 3 15/16"	12 5/8"	16' - 4 7/8"	2028	5348	8-10	8-10
RT32-55	2 3/16" - 3 15/16"	12 5/8"	18' - 1/2"	2174	5767	8-10	8-10

See outline drawing for wheel load information or use R&M's **QuoteMaster**® program.

Drives, joint plates, and bumpers are sold separately.

Bogie end truck weight and price is for two end trucks plus connector.

End Truck	Suitable Bridge Drive
RSN09, RSN11, RTL09, RTN09, RTN11, RT14	GES3
RT20	GES3, GES4
RT25, RT32	GES4, GES5
RT50	GES5



R&M Materials Handling, Inc.
 4501 Gateway Blvd.
 Springfield, OH 45502

www.rmhoist.com

List prices FOB factory, Springfield, Ohio,
 subject to change without notice.

Phone: 937-328-5100 Fax: 937-325-5319

Currency: USD
 Units: US
 Frequency: 60 Hz

QX/QL Crane Components
 TOP RUNNING END TRUCK PRICING

Page 9
 March 2, 2009

Type	Wheel Tread Width Range	Whl. Dia.	Wheel Base	Approx. weight/trk. (lbs)	List Price per End Truck	Lead Time (weeks)	
						S.G.	D.G.
RT32B-14	2 3/16" - 3 15/16"	12 5/8"	4' - 7 1/8"	1828	9071	NA	8-10
RT32B-16	2 3/16" - 3 15/16"	12 5/8"	5' - 3"	1947	9511	NA	8-10
RT32B-18	2 3/16" - 3 15/16"	12 5/8"	5' - 10 7/8"	2061	9937	NA	8-10
RT32B-20	2 3/16" - 3 15/16"	12 5/8"	6' - 6 3/4"	2180	10411	NA	8-10
RT50-22	2 3/16" - 3 15/16"	19 11/16"	7' - 2 5/8"	1742	6052	8-10	8-10
RT50-27	2 3/16" - 3 15/16"	19 11/16"	8' - 10 3/8"	1984	6512	8-10	8-10
RT50-31	2 3/16" - 3 15/16"	19 11/16"	10' - 2"	2116	6810	8-10	8-10
RT50-38	2 3/16" - 3 15/16"	19 11/16"	12' - 5 5/8"	2513	7284	8-10	8-10
RT50-45	2 3/16" - 3 15/16"	19 11/16"	14' - 9 1/8"	2910	7744	8-10	8-10
RT50-50	2 3/16" - 3 15/16"	19 11/16"	16' - 4 7/8"	3285	8245	8-10	8-10
RT50-55	2 3/16" - 3 15/16"	19 11/16"	18' - 1/2"	3505	8556	8-10	8-10
RT50B-16	2 3/16" - 3 15/16"	19 11/16"	5' - 3"	1980	12104	NA	8-10
RT50B-18	2 3/16" - 3 15/16"	19 11/16"	5' - 10 7/8"	2156	12618	NA	8-10
RT50B-20	2 3/16" - 3 15/16"	19 11/16"	6' - 6 3/4"	2332	13187	NA	8-10

See outline drawing for wheel load information or use R&M's **QuoteMaster**® program.
 Drives, joint plates, and bumpers are sold separately.
 Bogie end truck weight and price is for two end trucks plus connector.

End Truck	Suitable Bridge Drive
RSN09, RSN11, RTL09, RTN09, RTN11, RT14	GES3
RT20	GES3, GES4
RT25, RT32	GES4, GES5
RT50	GES5



R&M Materials Handling, Inc.
 4501 Gateway Blvd.
 Springfield, OH 45502

www.rmhoist.com

List prices FOB factory, Springfield, Ohio,
 subject to change without notice.
 Phone: 937-328-5100 Fax: 937-325-5319

Currency: USD
 Units: US
 Frequency: 60 Hz

QX/QL Crane Components

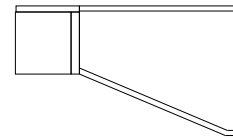
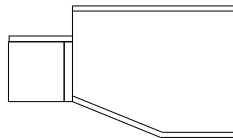
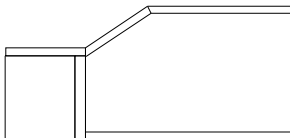
TOP RUNNING END TRUCK PRICING

Page 10
 March 2, 2009

Type	Wheel Tread Width Range	Whl. Dia.	Wheel Base	Approx. weight/trk. (lbs)	List Price per End Truck	Lead Time (weeks)	
						S.G.	D.G.
RSN09-13	2" - 2 3/4"	3 1/2"	4'-1 1/4"	190	916	8-10	N.A.
RSN09-16	2" - 2 3/4"	3 1/2"	5'-3"	256	993	8-10	8-10
RSN09-20	2" - 2 3/4"	3 1/2"	6'-6 3/4"	287	1069	8-10	8-10
RSN09-25	2" - 2 3/4"	3 1/2"	8'-2 7/16"	328	1184	8-10	8-10
RSN11-16	2 1/16" - 3 7/16"	4 3/8"	5'-3"	395	1070	8-10	8-10
RSN11-20	2 1/16" - 3 7/16"	4 3/8"	6'-6 3/4"	445	1139	8-10	8-10
RSN11-25	2 1/16" - 3 7/16"	4 3/8"	8'-2 7/16"	507	1223	8-10	8-10
RSN11-32	2 1/16" - 3 7/16"	4 3/8"	10'-4"	588	1374	8-10	8-10

On the RSN end truck, the girder is joined to joint plate through a shear type connection.

Samples of a shear joint connection



See outline drawing for wheel load information or use R&M's **QuoteMaster**® program.

Drives, end truck joint plates, and bumpers must be added separately.

End Truck	Suitable Bridge Drive
RSN09, RSN11, RTL09, RTN09, RTN11, RT14	GES3
RT20	GES3, GES4
RT25, RT32	GES4, GES5
RT50	GES5

R&M Materials Handling, Inc.
 4501 Gateway Blvd.
 Springfield, OH 45502



www.rmhoist.com

List prices FOB factory, Springfield, Ohio,
 subject to change without notice.

Phone: 937-328-5100 Fax: 937-325-5319

Type	Possible Girder Connection Position		Suitable for End Truck Type	Maximum Flange Width	List Price per End Truck		Lead Time (weeks)
	Profile	Box			S.G.	D.G.	
EBN09-400x200	S;M;L	S;M;L	RSN09	15 3/4"	153	298	8-10
EBN11-400x255	S;M;L	S;M;L	RSN11	15 3/4"	191	390	8-10
A3	S;M	S;M	RTN09, RTL09	12 3/16"	99	199	2-4
A4	S;M	S;M	RTN11	14 3/16"	99	199	2-4
A6	S;M	S;M	RTN11	21 5/8"	99	199	8-10
K4	S;M	S;M	RT25; RT32	16 1/8"	373	745	8-10
K5	S;M	S;M	RT25; RT32; RT50	20 7/16"	373	745	2-4
K7	S;M	S;M	RT32; RT50	29 1/8"	373	745	8-10
K9	S;M	S;M	RT50	39"	442	865	8-10
L3	S;M	S;M	RT20	11 13/16"	230	461	2-4
L4	S;M	S;M	RT20	16 1/8"	230	461	2-4
L5	S;M	S;M	RT20	20 7/16"	230	461	2-4
R3	S;M;L	S;M;L	RT20	11 13/16"	285	569	8-10
R4	S;M;L	S;M;L	RT20	16 1/8"	285	569	2-4
R5	S;M;L	S;M;L	RT20	20 7/16"	285	569	8-10

S = Standard connection
M = Medium connection
L = Low connection
H = High connection
S.G. = Single girder
D.G. = Double girder

Above prices apply only when ordered with end truck.
See End Truck Technical Guide for more information.
XXX = User specified dimension (mm)

R&M Materials Handling, Inc.
4501 Gateway Blvd.
Springfield, OH 45502



www.rmhoist.com

List prices FOB factory, Springfield, Ohio,
subject to change without notice.
Phone: 937-328-5100 Fax: 937-325-5319

Type	Possible Connection Position		Suitable for End Truck Type	Maximum Flange Width	List Price per End Truck		Lead Time (weeks)
	Profile	Box			S.G.	D.G.	
S4	no	L	RT25; RT32	16 1/8"	379	758	8-10
S5	no	L	RT25; RT32	20 7/16"	379	758	8-10
S6	no	L	RT32; RT50	20 7/16"	474	948	8-10
S7	no	L	RT32; RT50	29 1/8"	474	948	8-10
BA1	S	no	RU08	See Note	92	191	2-4
BA2	S	no	RU08	See Note	92	191	2-4
BA3	S	no	RU08	See Note	92	191	2-4
SA3	S;M;H	S;M;H	RU08	11 13/16"	92	191	8-10
BB2	S	no	RU10	See Note	92	191	2-4
BB3	S	no	RU10	See Note	92	191	2-4
BB4	S	no	RU10	See Note	92	191	2-4
BB5	S	no	RU10	See Note	92	191	2-4
SB4	S;M	S;M	RU10	16 1/8"	92	191	8-10
HB4(A)	S;M	S;M	RH10	16 1/8"	109	217	8-10
HB4(B)	S;M	S;M	RH10	16 1/8"	109	217	8-10
KB2	S	no	RH10	See Note	94	217	8-10
KB3	S	no	RH10	See Note	94	195	8-10
KB4	S	no	RH10	See Note	94	195	8-10
KB5	S	no	RH10	See Note	94	195	8-10

Note: These are bolted connections without a joint plate. The different types define the bolt layout.

S = Standard connection
M = Medium connection
L = Low connection
H = High connection
S.G. = Single girder
D.G. = Double girder

Above prices apply only when ordered with end truck.
See End Truck Technical Guide for more information.
XXX = User specified dimension (mm)
Note: Bolted connection without a joint plate



R&M Materials Handling, Inc.
4501 Gateway Blvd.
Springfield, OH 45502

List prices FOB factory, Springfield, Ohio,
subject to change without notice.

www.rmhoist.com Phone: 937-328-5100 Fax: 937-325-5319

Currency: USD
Units: US
Frequency: 60 Hz

QX / QL Crane Components
END TRUCK BUMPER PRICING

Page 13
March 2, 2009

Type	Code	Bumper Length	Bumper Diameter	List Price per End Truck	Lead Time (weeks)
D1801	A	2 1/8"	2 1/2"	32	2-4
D2240	B	2 5/8"	3 1/8"	49	2-4
D2241	C	3 3/8"	3 7/8"	81	2-4
D2242	D	4 1/8"	4 7/8"	97	2-4
PUR100*100	G	3 7/8"	3 7/8"	162	8-10
PUR160*160	H	6 1/4"	6 1/4"	682	8-10
PUR200*200	I	7 7/8"	7 7/8"	991	8-10
PUR125*125	M	5"	5"	309	8-10
PUR160*240	P	9 7/16"	6 1/4"	650	8-10
PUR200*300	S	11 13/16"	7 7/8"	1430	8-10

Note: Above prices are valid only when purchased with end truck.

R&M Materials Handling, Inc.
4501 Gateway Blvd.
Springfield, OH 45502



www.rmhoist.com

List prices FOB factory, Springfield, Ohio,
subject to change without notice.
Phone: 937-328-5100 Fax: 937-325-5319

Currency: USD
 Units: US
 Frequency: 60 Hz

QX / QL Crane Components

Page 14
 March 2, 2009

BRIDGE DRIVE PRICING

Type	Motor Code	Inverter Motor	Approx. weight/ drive (lbs)	Motor HP	Synch motor speed (rpm)	Nominal motor current @ 460V	List Price	Lead Time (weeks)
DS3	MF06LA104		43	0.74 / 0.16	3600/900	1.3	1254	2-4
DS3	MF06LA20P	x	43	1.01	3600	2.1	1099	2-4
DS3	MF07LA104		41	0.40 / 0.09	3600/900	1.3	1308	2-4
DS3	MF07LB104		44	0.74 / 0.17	3600/900	1.6	1308	2-4
DS3	MF06LA100	x	43	0.87	4800	1.3	1099	2-4
DS3	MF06LA200	x	43	0.74	3600	1.8	1013	2-4
DS3	MF06MA100	x	43	0.60	4800	2.1	991	2-4
DS3	MF06MA200	x	43	0.50	3600	1.2	902	2-4
DS3	MF07LA100	x	41	0.40	3600	1.0	1110	2-4
DS3	MF07LA200	x	41	0.40	1800	1.0	1110	8-10
DS3	MF07LB100	x	44	0.74	3600	1.3	1164	2-4
DS3	MF07ZC100	x	48	1.21	3600	1.9	1386	8-10
DS4	MF06LA104		43	0.74 / 0.16	3600/900	1.3	1760	2-4
DS4	MF06LA20P	x	43	1.01	3600	2.1	1598	2-4
DS4	MF07ZC104		48	1.01 / 0.24	3600/900	1.9	1719	8-10
DS4	MF06LA100	x	43	0.87	4800	2.1	1598	2-4
DS4	MF06LA200	x	43	0.74	3600	1.8	1598	2-4
DS4	MF06LB100	x	44	1.48	4800	2.9	1841	2-4
DS4	MF06LB200	x	44	1.48	3600	2.9	1801	2-4
DS4	MF06MA100	x	43	0.60	4800	2.1	1516	2-4
DS4	MF06MA200	x	43	0.50	3600	1.2	1422	2-4
DS4	MF07LB100	x	44	0.74	3600	1.3	1435	2-4
DS4	MF07LB200	x	44	0.74	1800	1.6	1435	2-4
DS4	MF07ZC100	x	48	1.21	3600	1.9	1652	2-4



R&M Materials Handling, Inc.
 4501 Gateway Blvd.
 Springfield, OH 45502

www.rmhoist.com

List prices FOB factory, Springfield, Ohio,
 subject to change without notice.

Phone: 937-328-5100 Fax: 937-325-5319

Currency: USD
 Units: US
 Frequency: 60 Hz

QX / QL Crane Components

Page 15
 March 2, 2009

BRIDGE DRIVE PRICING

Type	Motor Code	Inverter Motor	Approx. weight/ drive (lbs)	Motor HP	Synch motor speed (rpm)	Nominal motor current @ 460V	List Price	Lead Time (weeks)
GEK1	MF06LA104		43	0.74 / 0.16	3600/900	1.3	956	8-10
GEK1	MF06LA20P	x	43	1.01	3600	2.1	801	8-10
GEK1	MF06MA104		44	0.50 / 0.09	3600 / 900	0.9	758	8-10
GEK1	MF06LA100	x	43	0.87	4800	2.1	801	8-10
GEK1	MF06LA200	x	43	0.74	3600	1.8	715	8-10
GEK1	MF06MA100	x	44	0.60	4800	2.1	693	8-10
GEK1	MF06MA200	x	44	0.50	3600	1.2	604	8-10
GEK2	MF06LA104		43	0.74 / 0.16	3600/900	1.3	1034	2-4
GEK2	MF06LA20P	x	43	1.01	3600	2.1	869	2-4
GEK2	MF06MA104		44	0.50 / 0.09	3600 / 900	0.9	826	2-4
GEK2	MF06LA100	x	43	0.87	4800	2.1	869	2-4
GEK2	MF06LA200	x	43	0.74	3600	1.8	780	2-4
GEK2	MF06MA100	x	44	0.60	4800	2.1	755	2-4
GEK2	MF06MA200	x	44	0.50	3600	1.2	663	2-4
GES3	MF06LA104		44	0.74 / 0.16	3600 / 900	1.3	1254	2-4
GES3	MF06LA20P	x	44	1.01	3600	2.1	1099	2-4
GES3	MF06MA104		44	0.50 / 0.09	3600 / 900	0.9	1056	2-4
GES3	MF06LA100	x	44	0.87	4800	2.1	1099	2-4
GES3	MF06LA200	x	44	0.74	3600	1.8	1013	2-4
GES3	MF06MA100	x	44	0.60	4800	2.1	991	2-4
GES3	MF06MA200	x	44	0.50	3600	1.2	1013	2-4

R&M Materials Handling, Inc.
 4501 Gateway Blvd.
 Springfield, OH 45502



www.rmhoist.com

List prices FOB factory, Springfield, Ohio,
 subject to change without notice.
 Phone: 937-328-5100 Fax: 937-325-5319

Currency: USD
 Units: US
 Frequency: 60 Hz

QX / QL Crane Components

Page 16
 March 2, 2009

BRIDGE DRIVE PRICING

Type	Motor Code	Inverter Motor	Approx. weight/ drive (lbs)	Motor HP	Synch motor speed (rpm)	Nominal motor current @ 460V	List Price	Lead Time (weeks)
GES4	MF06LA104		66	0.74 / 0.16	3600 / 900	1.3	1497	2-4
GES4	MF06LA20P	x	66	1.01	3600	2.1	1408	2-4
GES4	MF06MA104		66	0.50 / 0.09	3600 / 900	0.9	1297	2-4
GES4	MF07X-104		66	1.21 / 0.27	3600 / 900	2.7	1606	2-4
GES4	MF06LA100	x	66	0.87	4800	2.1	1343	2-4
GES4	MF06LA200	x	66	0.74	3600	1.8	1343	8-10
GES4	MF06LB100	x	66	1.48	4800	2.9	1584	8-10
GES4	MF06LB200	x	66	1.48	3600	2.9	1541	2-4
GES4	MF06MA100	x	66	0.60	4800	2.1	1254	8-10
GES4	MF06MA200	x	66	0.50	3600	1.2	1167	8-10
GES5	MF07X-104		82	1.21 / 0.27	3600/900	2.7	2223	8-10
GES5	MF10M-104		88	2.01 / 0.47	3600/900	3	2421	8-10
GES5	MF06LB100	x	82	1.48	4800	2.9	2155	8-10
GES5	MF06LB200	x	82	1.48	3600	2.9	2134	8-10
GES5	MF07XA100	x	82	2.41	4800	4.3	2310	8-10
GES5	MF07XA200	x	82	2.41	3600	3.9	2464	8-10
GES5	MF07XB100	x	82	4.02	4800	7.9	2310	8-10
GES5	MF07XB200	x	82	3.35	3600	6.5	2383	8-10



R&M Materials Handling, Inc.
 4501 Gateway Blvd.
 Springfield, OH 45502

www.rmhoist.com

List prices FOB factory, Springfield, Ohio,
 subject to change without notice.
 Phone: 937-328-5100 Fax: 937-325-5319

Currency: USD
 Units: US
 Frequency: 60 Hz

QX Crane Components

BRIDGE PANEL PRICING

Page 17
 March 2, 2009

For use with two-speed hoist control and one hoist on bridge

Type	Number of Motors for Hoisting	Max. HP of each Hoist Motor	Number of Hoists on Bridge	List Price - See Note!			Lead Time (weeks)
				208/230 volt	460 volt	575 volt	
BPPX-1	1	2.4	1	991 ⁽¹⁾	842	991	2-4
BPR1-1	1	1.5	1	1102	937	1102	2-4
BPP1-1	1	3	1	1102	937	1102	2-4
BPP2-1	1	5.8	1	1102	937	1102	2-4
BPP3-1	1	7.2	1	1102	937	1102	2-4
BPP4-1	1	12.1	1	1242	1056	1242	8-10
BPP5-1	1	14.8	1	1453	1235	1453	2-4
BPP6-1	1	24.1	1	1822 ⁽¹⁾	1549	1822	2-4
BPP7-1	1	28.2	1	2485	2112	2485	8-10
BPP8-1	1	33.5	1	2787	2369	2787	8-10
BP2P6-1	2	24.1	1	3074	2613	3074	8-10
BP2P7-1	2	28.2	1	4173	3547	4173	8-10

Prices are subject to change depending on the actual crane specification. To get the most accurate bridge panel and inverter prices, use R&M's QuoteMaster[®] program.

Includes disconnect switch, mainline contactor, control voltage transformer, and autotransformer for the inverter controls as needed. (Autotransformer is needed when the power supply voltage is something other than 460-3-60.)

⁽¹⁾ Lead time is 8-10 weeks.

NOTE!

The above bridge panel prices do not include the price for the bridge inverter. The bridge inverter price must be added separately. See Bridge Inverter Pricing page.



R&M Materials Handling, Inc.
 4501 Gateway Blvd.
 Springfield, OH 45502

www.rmhoist.com

List prices FOB factory, Springfield, Ohio,
 subject to change without notice.
 Phone: 937-328-5100 Fax: 937-325-5319

Currency: USD
 Units: US
 Frequency: 60 Hz

QX Crane Components

BRIDGE PANEL PRICING

Page 18
 March 2, 2009

For use with two-speed hoist control & two equal-capacity hoists on bridge

Type	Number of Motors for Hoisting	Max. HP of each Hoist Motor	Number of Hoists on Bridge	List Price - See Note!			Lead Time (weeks)
				208/230 volt	460 volt	575 volt	
BPR1-2	1	1.5	2	1575 ⁽¹⁾	1338	1575	2-4
BPP1-2	1	3	2	1575 ⁽¹⁾	1338	1575	2-4
BPP2-2	1	5.8	2	1575 ⁽¹⁾	1338	1575	2-4
BPP3-2	1	7.2	2	1575 ⁽¹⁾	1338	1575	2-4
BPP4-2	1	12.1	2	1775	1509	1775	8-10
BPP5-2	1	14.8	2	2075 ⁽¹⁾	1764	2075	2-4
BPP6-2	1	24.1	2	2603	2213	2603	8-10
BPP7-2	1	28.2	2	3550	3017	3550	8-10
BPP8-2	1	33.5	2	3982	3385	3982	8-10
BP2P6-2	2	24.1	2	4382	3733	4392	8-10
BP2P7-2	2	28.2	2	5962	5067	5962	8-10

The above panels include tandem hoist control relays to allow separate or combined hoist operation (I, I+II, II)

Prices are subject to change depending on the actual crane specification. To get the most accurate bridge panel and inverter prices, use R&M's QuoteMaster[®] program.

Includes disconnect switch, mainline contactor, control voltage transformer, and autotransformer for the inverter controls as needed. (Autotransformer is needed when the power supply voltage is something other than 460-3-60.)

⁽¹⁾ Lead time is 8-10 weeks.

NOTE!

The above bridge panel prices do not include the price for the bridge inverter. The bridge inverter price must be added separately. See Bridge Inverter Pricing page.

R&M Materials Handling, Inc.
 4501 Gateway Blvd.
 Springfield, OH 45502



www.rmhoist.com

List prices FOB factory, Springfield, Ohio,
 subject to change without notice.

Phone: 937-328-5100 Fax: 937-325-5319

Currency: USD
 Units: US
 Frequency: 60 Hz

QX Crane Components

BRIDGE PANEL PRICING

Page 19
 March 2, 2009

For use with ControlMaster Plus hoist inverter

Type	Number of Motors for Hoisting	Max. HP of each Hoist Motor	Number of Hoists on Bridge	List Price - See Note!			Lead Time (weeks)
				208/230 volt	460 volt	575 volt	
BPT1-1	1	3	1	2533	2153	2533	8-10
BPT2-1	1	5.8	1	2533	2153	2533	8-10
BPT3-1	1	7.2	1	2533	2153	2533	8-10
BPT4-1	1	12.1	1	3823	3249	3823	8-10
BPT5-1	1	14.8	1	4619	3926	4619	8-10
BPT6-1	1	24.1	1	4874	4143	4874	8-10
BPT7-1	1	28.2	1	5511	4684	5511	8-10
BPT8-1	1	36.2	1	6180	5253	6180	8-10
BPT9-1	1	45.6	1	6849	5822	6849	8-10
BPTA-1	1	56.3	1	7741	6580	7741	8-10
BP2T6-1	2	24.1	1	7231	6147	7231	8-10
BP2T7-1	2	28.2	1	8346	7094	8346	8-10
BP2T8-1	2	36.2	1	10720	9101	10720	8-10
BP2T9-1	2	45.6	1	12553	10660	12553	8-10

Prices are subject to change depending on the actual crane specification. To get the most accurate bridge panel and inverter prices, use R&M's QuoteMaster[®] program.

Includes disconnect switch, mainline contactor, control voltage transformer, and autotransformer for the inverter controls as needed. (Autotransformer is needed when the power supply voltage is something other than 460-3-60.)

NOTE!

The above bridge panel prices do not include the price for the bridge inverter. The bridge inverter price must be added separately. See Bridge Inverter Pricing page.

R&M Materials Handling, Inc.
 4501 Gateway Blvd.
 Springfield, OH 45502



www.rmhoist.com

List prices FOB factory, Springfield, Ohio,
 subject to change without notice.
 Phone: 937-328-5100 Fax: 937-325-5319

Currency: USD
 Units: US
 Frequency: 60 Hz

QX Crane Components

BRIDGE PANEL PRICING

Page 20
 March 2, 2009

For use with ControlMaster Plus hoist inverter & two equal-capacity hoists on bridge

Type	Number of Motors for Hoisting	Max. HP of each Hoist Motor	Number of Hoists on Bridge	List Price - See Note!			Lead Time (weeks)
				208/230 volt	460 volt	575 volt	
BPT1-2	1	3	2	3618	3075	3618	8-10
BPT2-2	1	5.8	2	3618	3075	3618	8-10
BPT3-2	1	7.2	2	4703	3998	4703	8-10
BPT4-2	1	12.1	2	5461	4642	5461	8-10
BPT5-2	1	14.8	2	6599	5609	6599	8-10
BPT6-2	1	24.1	2	6963	5918	6963	8-10
BPT7-2	1	28.2	2	7873	6692	7873	8-10
BPT8-2	1	36.2	2	8829	7504	8829	8-10
BPT9-2	1	45.6	2	9784	8217	9784	8-10
BPTA-2	1	56.3	2	11058	9400	11058	8-10
BP2T6-2	2	24.1	2	10330	8781	10330	8-10
BP2T7-2	2	28.2	2	11923	10135	11923	8-10
BP2T8-2	2	36.2	2	13333	11530	13333	8-10
BP2T9-2	2	45.6	2	15318	13514	15318	8-10

The above panels include tandem hoist control relays to allow separate or combined hoist operation (I, I+II, II)

Prices are subject to change depending on the actual crane specification. To get the most accurate bridge panel and inverter prices, use R&M's QuoteMaster[®] program.

Includes disconnect switch, mainline contactor, control voltage transformer, and autotransformer for the inverter controls as needed. (Autotransformer is needed when the power supply voltage is something other than 460-3-60.)

NOTE!

The above bridge panel prices do not include the price for the bridge inverter. The bridge inverter price must be added separately. See Bridge Inverter Pricing page.



R&M Materials Handling, Inc.
 4501 Gateway Blvd.
 Springfield, OH 45502

www.rmhoist.com

List prices FOB factory, Springfield, Ohio,
 subject to change without notice.

Phone: 937-328-5100 Fax: 937-325-5319

Currency: USD
 Units: US
 Frequency: 60 Hz

QL Crane Components

BRIDGE PANEL PRICING

Page 21
 March 2, 2009

For use with LoadMate electric chain hoist with contactor hoist control

Type	Max. HP of each Hoist Motor	Number of Hoists on Bridge	List Price - See Note!			Lead Time (weeks)
			208/230 volt	460 volt	575 volt	
BPC1-1	1.5	1	1102	937	1102	2-4
BPC2-1	3	1	1102	937	1102	2-4
BPC3-1	5.8	1	1102	937	1102	2-4
BPC1-2	1.5	2	1575 ⁽¹⁾	1338	1575	2-4
BPC2-2	3	2	1575 ⁽¹⁾	1338	1575	2-4
BPC3-2	5.8	2	1575 ⁽¹⁾	1338	1575	2-4

For use with LoadMate electric chain hoist with inverter hoist control

BPV1-1	1.5	1	NA	NA	NA	---
BPV2-1	3	1	POA ⁽¹⁾	937	POA ⁽¹⁾	2-4
BPV3-1	5.8	1	NA	NA	NA	---
BPV1-2	1.5	2	NA	NA	NA	---
BPV2-2	3	2	POA ⁽¹⁾	1338	POA ⁽¹⁾	2-4
BPV3-2	5.8	2	NA	NA	NA	---

The above BPxx-2 panels include tandem hoist control relays to allow separate or combined hoist operation (I, I+II, II)

Prices are subject to change depending on the actual crane specification. To get the most accurate bridge panel and inverter prices, use R&M's QuoteMaster[®] program.

Includes disconnect switch, mainline contactor, control voltage transformer, and autotransformer for the inverter controls as needed. (Autotransformer is needed when the power supply voltage is something other than 460-3-60.)

⁽¹⁾ Lead time is 8-10 weeks.

NOTE!

The above bridge panel prices do not include the price for the bridge inverter. The bridge inverter price must be added separately. See Bridge Inverter Pricing page.

R&M Materials Handling, Inc.
 4501 Gateway Blvd.
 Springfield, OH 45502



www.rmhoist.com

List prices FOB factory, Springfield, Ohio,
 subject to change without notice.

Phone: 937-328-5100 Fax: 937-325-5319

Currency: USD Units: US Frequency: 60 Hz	QX / QL Crane Components BRIDGE INVERTER PRICING	Page 22 March 2, 2009
--	--	--------------------------

Type	Maximum output current		List Price	Lead Time (weeks)
	Nominal Current (A) @ 460 Volts	Starting Current (A) @ 460 Volts		

ControlMaster Select Inverter				
CMST 002F	5.1	7.7	1760	2-4
CMST 003F	8	12	2031	2-4
CMST 004F	10	15	2302	2-4
CMST 005F	13	20	3114	8-10
CMST 007F	18	27	3655	8-10
CMST 011F	24	36	4739	8-10
CMST 015F	32	48	5415	8-10
CMST 018F	42	63	6742	8-10
CMST 022F	48	72	7744	8-10

ControlMaster CMXC Inverter				
CMXC 022F	5.0	7.5	460	2-4

Above prices are valid only when purchased with the bridge panel.

R&M Materials Handling, Inc.
4501 Gateway Blvd.
Springfield, OH 45502



www.rmhoist.com

List prices FOB factory, Springfield, Ohio,
subject to change without notice.
Phone: 937-328-5100 Fax: 937-325-5319

Currency: USD
 Units: US
 Frequency: 60 Hz

QX / QL Crane Components

Page 23
 March 2, 2009

PUSHBUTTON PENDANT PRICING

Type	ON / OFF	Hoist	Trolley	Bridge	Selector Switch	List Price	Lead Time (weeks)
PBR style Push Button Pendant							
PBR042001_00-N...PE20	X	2	0	0	0	406	2-4
PBR082201_00-N...PE20	X	2	2	0	0	406	2-4
PBR082221_00-N...PE30	X	2	2	2	0	406	2-4
PBR122221_V2-N...PE30	X	2	2	2	V2	542	2-4
PBR122221_V3-N...PE30	X	2	2	2	V3	542	2-4
PBR122221_00-N...PE3E	X	2x2	2x2	2	0	1590	2-4
PD style Push Button Pendant							
PD06-2001NC00-...H0	X	2	0	0	0	555	2-4
PD08-2201NC00-...H0	X	2	2	0	0	555	2-4
PD08-2221NC00-...P0	X	2	2	2	0	555	2-4
PD12-2221NCV2-...P0	X	2	2	2	V2	704	2-4
PD12-2221NCV3-...P0	X	2	2	2	V3	704	2-4
PD12-2221NC00-...PE	X	2x2	2x2	2	0	1696	2-4
Standby Heater for Pendant Station						135	8-10

Prices apply only when ordered with crane components or hoist.

0 = Not included
 2 = Two-speed
 V2 = 2 position selection (1 or 2)
 V3 = 3 position selection (1, 1+2, 2)
 X = Included
 PE2 = plug on SX hoist
 PE3 = plug on the moveable festoon trolley (on bridge)

Included:

Pendant cable for specified lift up to 50 ft max.
 Pushbutton pendant station
 Plug



R&M Materials Handling, Inc.
 4501 Gateway Blvd.
 Springfield, OH 45502

www.rmhoist.com

List prices FOB factory, Springfield, Ohio,
 subject to change without notice.
 Phone: 937-328-5100 Fax: 937-325-5319

Currency: USD
 Units: US
 Frequency: 60 Hz

QX / QL Crane Components
RACON II RADIO REMOTE CONTROL PRICING

Page 24
 March 2, 2009

Type	Control Method	Hoist	Trolley	Bridge	Selector Switch	List Price	Lead Time (weeks)
Single system for hoist							
RaConII RH110.....	Pushbutton	2	2	---	none	1939	2-4
Single system for crane							
RaConII RS110.....	Pushbutton	2	2	2	none	2061	2-4
RaConII RF130.....	Pushbutton	2	2	2	none	2283	2-4
RaConII RF13S.....	Pushbutton	2	2	2	V3	2391	2-4
Spare transmitter (when purchased with new system - add 25% to radio list price)						+ 0.25 x list price	

Included:

2 = Two-speed

V3 = 3 position selection (1, 1+2, 2)

Main contactor On-button

Emergency Stop

Transmitter with battery and backup battery

Receiver & connection cable with ready-to-go plugs

Battery charger



R&M Materials Handling, Inc.
 4501 Gateway Blvd.
 Springfield, OH 45502

www.rmhoist.com

List prices FOB factory, Springfield, Ohio,
 subject to change without notice.

Phone: 937-328-5100 Fax: 937-325-5319

Type	Control Method	Hoist	Trolley	Bridge	Selector Switch	List Price	Lead Time (weeks)
------	----------------	-------	---------	--------	-----------------	------------	-------------------

Single system for a crane

RaCon508MI_0...00ST	Pushbutton	2	2	none	none	2567	8-10
RaCon516MI_0...00ST	Pushbutton	2	2	2	none	3038	8-10
RaCon516MI_S...00ST	Pushbutton	2	2	2	V2;V3	3344	8-10
RaCon516SP_0...00ST	Joysticks	2	2	2	none	4887	8-10
RaCon516SP_S...00ST	Joysticks	2	2	2	V2;V3	5101	8-10

Tandem systems for two cranes

RaCon516MI_0...T1ST	Pushbutton	2	2	2	none	6872	8-10
RaCon516SP_0...T1ST	Joysticks	2	2	2	none	9759	8-10

Spare transmitter (when purchased with new system - add 40% to radio list price)	+ 0.40 x list price	
--	----------------------------	--



Included:

- | | |
|--|--|
| 2 = Two-speed
V2 = 2 position selection (1 or 2)
V3 = 3 position selection (1, 1+2, 2) | Main contactor On-button
Emergency Stop
Key Switch
Transmitter with battery and backup battery
Receiver & connection cable with ready-to-go plugs
Battery charger |
|--|--|

R&M Materials Handling, Inc.
 4501 Gateway Blvd.
 Springfield, OH 45502



www.rmhoist.com

List prices FOB factory, Springfield, Ohio,
 subject to change without notice.
 Phone: 937-328-5100 Fax: 937-325-5319

Currency: USD Units: US Frequency: 60 Hz	<h2 style="margin: 0;">QX / QL Crane Components</h2> <p style="margin: 0;">CRANE COMPONENT OPTIONS PRICING</p>	Page 26 March 2, 2009
---	--	--

	Note	Code	Lead Time (weeks)	List Price
Thermal protection for bridge motor	B,C	BM08	8-10	306
IP66 Protection for bridge motor	C	BM09	8-10	306
Class H insulation for bridge motor	C	BM11	8-10	260
Manual release for bridge motor brake	B,C	BRA06	8-10	203
Magnetic limit switch for bridge		BT10	8-10	609
Photo detector anti-collision device for an existing crane	B,G	BT20	2-4	747
Ultrasonic sensors anti-collision device for an existing crane	B,G	BT20	8-10	2640
Rubber cables for hoist power supply (% of standard festoon package)		CBL07	8-10	+ 28%
Cable tray component package		CBL08	8-10	690
Bumper extensions for bridge end trucks (One pair)		DES44	8-10	1110
Insulation for bridge panel	B,G	EL23	8-10	Use QuoteMaster
Thermostat controlled heating	B,G	EL24	8-10	Use QuoteMaster
Bridge panel light - operated by door	G	EL25	8-10	734
Bridge panel light - manually operated	G	EL25	8-10	579
Rain cover for bridge panel	G	EL26	8-10	273
Cooling device per bridge panel - AC - Air conditioner	B,G	EL29	8-10	9263
Cooling device per bridge panel - CE - Cooling element	B,G	EL29	8-10	2970
Cooling device per bridge panel - CH - Air channel	B,G	EL29	8-10	7059
Cooling device per bridge panel - CHF - Air channel with filter	B,G	EL29	8-10	8500
Horn DBA 108		ELE05	2-4	271
All electrics in bridge panel	B,G	ELE10	8-10	Use QuoteMaster
Plug-in connector for pendant cable		ELE16	2-4	N.C.
Non-standard voltage/frequency for crane package	B	ELE21	8-10	509
Pliotex type wire marker		ELE48	8-10	311
Provision for crane lights (Price/light, 6 lights max./crane)	B,G	ELE61	8-10	398

Note A: List price = Regular list price x 1.65
Note B: Refer to hoist technical guide for details/restrictions
Note C: Per motor
Note D: Contact factory

Note E: Add HoistMonitor HS11 to hoist
Note F: Add HoistMonitor Elite HS13 to each hoist
Note G: Not available for chain hoist cranes
Note H: Price per direction



R&M Materials Handling, Inc.
4501 Gateway Blvd.
Springfield, OH 45502

www.rmhoist.com

List prices FOB factory, Springfield, Ohio,
subject to change without notice.
Phone: 937-328-5100 Fax: 937-325-5319

Currency: USD
 Units: US
 Frequency: 60 Hz

QX / QL Crane Components

CRANE COMPONENT OPTIONS PRICING

Page 27
 March 2, 2009

	Note	Code	Lead Time (weeks)	List Price
Hoist operated limit switch that trips mainline contactor	B,G	ELE64	8-10	433
Warning indication for traveling movement		ELE98	---	---
Flashing light - activated through crane traveling			2-4	273
Flashing light - activated through crane/trolley traveling			2-4	273
Flashing light - activated through trolley traveling			2-4	273
Warning sound - activated through crane traveling			2-4	273
Warning sound - activated through crane/trolley traveling			2-4	273
Warning sound - activated through trolley traveling			2-4	273
Flashing Light/Warning sound - activated through crane traveling			2-4	336
Flashing Light/Warning sound - activated through crane/trolley traveling			2-4	336
Flashing Light/Warning sound - activated through trolley traveling			2-4	336
Special lubrication for gears	B	GE21	8-10	100
One-step bridge travel limit switch (Slowdown)		LIM10	2-4	STD
One-step bridge travel limit switch (Stop)		LIM11	2-4	68
Two-step bridge travel limit switch (Slowdown+stop)		LIM12	2-4	447
Standby heater for bridge motor	C	MOT17	8-10	366
Rain cover for bridge motor	C,G	MOT18	8-10	135
Photo detector anti-collision device	B,G,H	OTH08	---	---
Stop operation - for one direction			2-4	747
Slowdown operation - for one direction			2-4	747
Slowdown & stop operation - for one direction			2-4	1495
Ultrasonic sensors anti-collision device	B,G,H	OTH08	---	---
Stop operation - for one direction			8-10	2640
Slowdown operation - for one direction			8-10	2640
Slowdown & stop operation - for one direction			8-10	5280

Note A: List price = Regular list price x 1.65
 Note B: Refer to hoist technical guide for details/restrictions
 Note C: Per motor
 Note D: Contact factory

Note E: Add HoistMonitor HS11 to hoist
 Note F: Add HoistMonitor Elite HS13 to each hoist
 Note G: Not available for QL chain hoist cranes
 Note H: Price per direction



R&M Materials Handling, Inc.
 4501 Gateway Blvd.
 Springfield, OH 45502

www.rmhoist.com

List prices FOB factory, Springfield, Ohio,
 subject to change without notice.
 Phone: 937-328-5100 Fax: 937-325-5319

Currency: USD
 Units: US
 Frequency: 60 Hz

QX / QL Crane Components

CRANE COMPONENT OPTIONS PRICING

Page 28
 March 2, 2009

	Note	Code	Lead Time (weeks)	List Price
Plug kit + pigtail for radio controls (By others)			2-4	131
Plug kit for radio controls (By others)			2-4	53
Rail sweeps - wood (Price per end truck)	B	OTH21	8-10	793
Rail sweeps - steel (Price per end truck)	B	OTH21	8-10	2488
Storm locks (Price per end truck)	B	OTH22	8-10	1267
Anti-jump catches for end truck (Price per end truck)	B	OTH24	8-10	688
Patented track wheels for end truck (Price per 8 wheels)		OTH26	2-4	1354
Crane number sticker		OTH28	2-4	68
Crane data plate		OTH30	2-4	95
Steel wheels for under running end trucks (Price per 8 wheels)			8-10	1169
IP55 stainless steel bridge panel adder (% of std bridge panel price)	A,B,G	PAN04	8-10	+ 45%
IP66 protection rating for stainless steel bridge panel	A,B,G	PAN07	8-10	+ 65%
Standby heater for bridge panel	G	PAN08	8-10	217
Plug source in bridge panel (1pc, 115v, 16A) - less plug outlet	G	PAN17	8-10	1628
Standby heater for pendant	G	PEN03	8-10	135
Contactoer bridge control (Two-speed)		PRI01	8-10	839
Longer chain for trolley tow arm		PS05	2-4	68

Note A: List price = Regular list price x 1.65 or 1.45
 Note B: Refer to hoist technical guide for details/restrictions
 Note C: Per motor
 Note D: Contact factory

Note E: Add HoistMonitor HS11 to hoist
 Note F: Add HoistMonitor Elite HS13 to each hoist
 Note G: Not available for QL chain hoist cranes
 Note H: Price per direction



R&M Materials Handling, Inc.
 4501 Gateway Blvd.
 Springfield, OH 45502

www.rmhoist.com

List prices FOB factory, Springfield, Ohio,
 subject to change without notice.
 Phone: 937-328-5100 Fax: 937-325-5319

Currency: USD
 Units: US
 Frequency: 60 Hz

QX / QL Crane Components

Page 29
 March 2, 2009

SPARE PARTS KIT PRICING

Spare Parts Packages for Bridge Panels

Hoisting Motor Size	List Price
P1, P2, P3	415
P4	458
P5, P6	633
P7	828
P8	1178

Spare part package for the bridge panel include:
 - Mainline contactor and fuses

Spare Parts Packages for Traveling Drives

Motor Size	List Price
MF06 (with DC brake)	349
MF07	349

Spare part package for the drives include:
 - D.C. brake repair set - 2 pcs
 - D.C. brake rectifier - 2 pcs

Spare Parts Packages - Traveling Inverters

Inverter Size	List Price
CMXC 007	568
CMXC 022	785
CM Select 002	2017
CM Select 003	2544
CM Select 004	3070

Spare Parts Packages for Traveling Drives

Motor Size	List Price
MF06 (with Compact brake)	131

Spare part package for the drives include:
 - Friction disc kit

Prices are valid only when purchased with a components package.

Additional discounting beyond your standard R&M discount is not available on spare parts kits.

R&M Materials Handling, Inc.
 4501 Gateway Blvd.
 Springfield, OH 45502



www.rmhoist.com

List prices FOB factory, Springfield, Ohio,
 subject to change without notice.

Phone: 937-328-5100 Fax: 937-325-5319