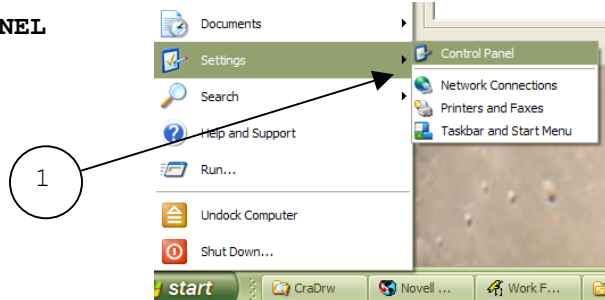


Font Installation Instructions

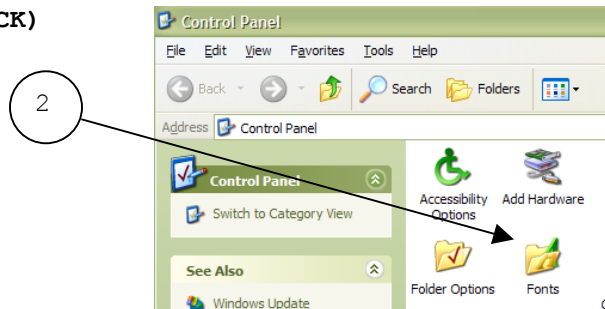
THE MICROVERTEX G4 CAD PROGRAM IN QUOTEMASTER® USES A NEW FONT NAMED "ARIAL UNICODE MS" FOR THE TEXT IN THE DRAWING.

TO INSTALL A NEW FONT TO YOUR COMPUTER, DO THE FOLLOWING:

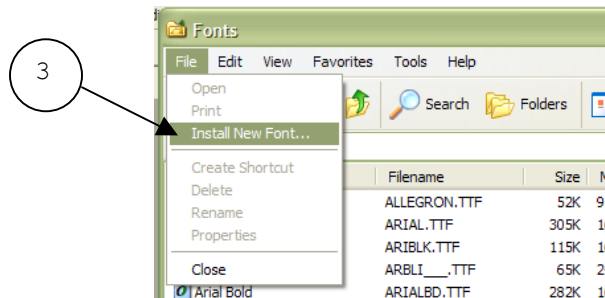
1. START→SETTINGS→CONTROL PANEL



2. SELECT "FONTS" (DOUBLE CLICK)



3. FILE→INSTALL NEW FONT



4. SELECT PATH:

WINDOWS XP USERS C:/WINDOWS/FONTS

WINDOWS 2000 USERS C:/WINNT/FONTS

5. SELECT ARIAL UNICODE MS (NORMAL) OR ARIAL UNICODE MS (TRUE TYPE) FROM WINDOW AND CLICK OK

6. WHEN PROGRAM ASK DO YOU WANT REINSTALL CLICK "OK"

7. NOW YOU CAN START USING MICROVERTEX G4

