

Word Path Instructions

If Microsoft Office is installed on your system after the installation of QuoteMaster®, or if Microsoft Office on your system is updated to a newer version, then the path to WINWORD.exe must be manually updated in the mm.ini configuration settings file found in QuoteMaster® program folder.

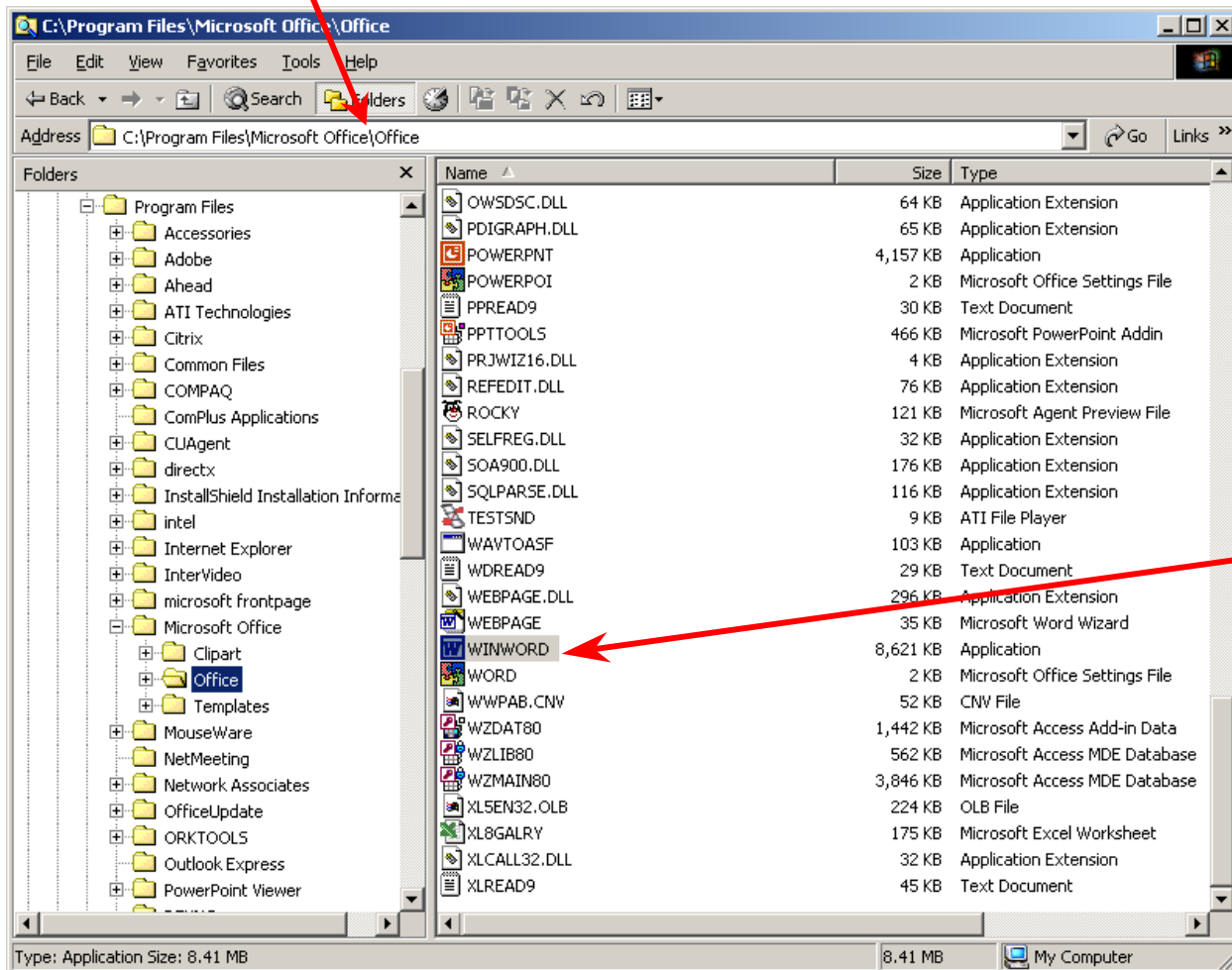
Before making the change to the path in the mm.ini file, close QuoteMaster®.

Step 1

Search the location of WINWORD.EXE on your computer's hard drive to determine the new path. A typical path could be:

C:\Program Files\Microsoft Office\Office

Highlight and then copy the new path that is shown in the address text box.

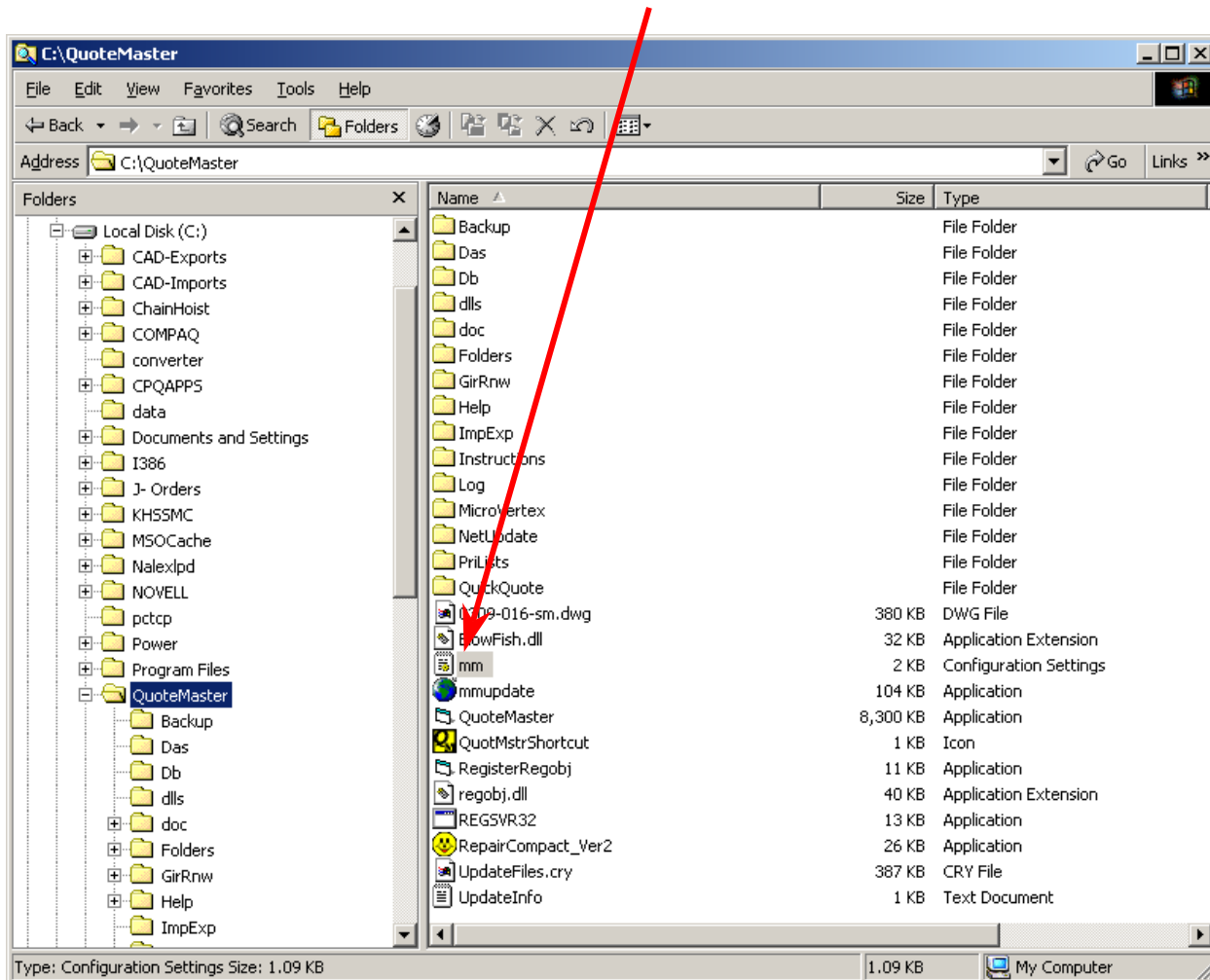


Step 2

Use Microsoft Explorer to find the QuoteMaster folder. The QuoteMaster folder should be located in the root directory of the local disc (**C:\QuoteMaster**).

Double click on the QuoteMaster folder and find the mm.ini file. Depending on your system settings, it may only display “mm” without the “ini” extension.

Double-click on the mm file to open the Notepad.



Step 3

Highlight the path **C:\PROGRA~1\MICROS~2\Office** between the equals sign and WINWORD.EXE and paste (Ctrl + V) the new path.

Close the **mm – Notepad** window to save the change. (To close, click the **x** in the upper right hand corner of the window.)

Restart QuoteMaster® and test your print function again.

```

[Directories]
GenDb_Nam=C:\QuoteMaster\db\Glosys.mdb
LocDb_Nam=C:\QuoteMaster\db\MmLoc.mdb
TmpDb_Nam=C:\QuoteMaster\db\MmTmp.mdb
DrIdb_Nam=C:\QuoteMaster\db\Drise1.mdb
ParDb_Nam=C:\QuoteMaster\db\Param.mdb
CnmDb_Nam=C:\QuoteMaster\db\ConManDb_.mdb
SysDb_Nam=C:\QuoteMaster\db\Sysinfo.mdb
ComDb_Nam=C:\QuoteMaster\db\ComDb_.mdb
CraDb_Nam=C:\QuoteMaster\db\Craco_.mdb
MatDb_Nam=C:\QuoteMaster\db\Materials.mdb
DocTempTh=C:\QuoteMaster\doc
VexTmpPth=C:\QuoteMaster\Microvertex
LogFilPth=C:\QuoteMaster\Log
PriLstPth=C:\QuoteMaster\PriLists
wrkFldPth=C:\QuoteMaster\Folders
AkaFldPth=C:\QuoteMaster\quickQuote
AkaFldPthold=C:\QuoteMaster\akapp
HelpPth=C:\QuoteMaster\Help
Ur1NameDas=
Ur1NameEdi=
BrowserPath=C:\Program Files\Internet Explorer\iexplore.exe
NetUpdateServerIP=194.142.200.14
wrDExePth=C:\PROGRA~1\MICROS~2\office\WINWORD.EXE
[ Databases ]
SaveMethod=Local
[ Other ]
DebugMode=False
[ ImpExp ]
InUse=1
DatabasePath=C:\QuoteMaster\ImpExp
[ Archive Directories ]
ArcPth=C:\QuoteMaster
LocDb_Nam=C:\QuoteMaster
CnmDb_Nam=C:\QuoteMaster
wrkFldPth=C:\QuoteMaster
[ User ]
LastUser=r casmc
  
```

This is the line that needs changed.