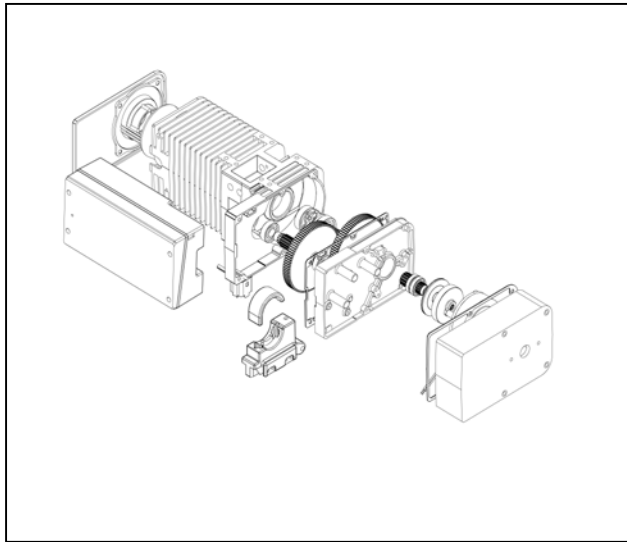


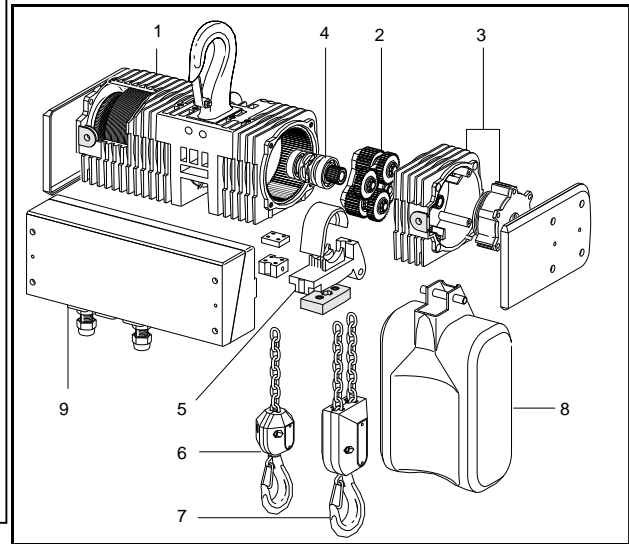
5 Description of Hoist

The main components of the electric chain hoist include:

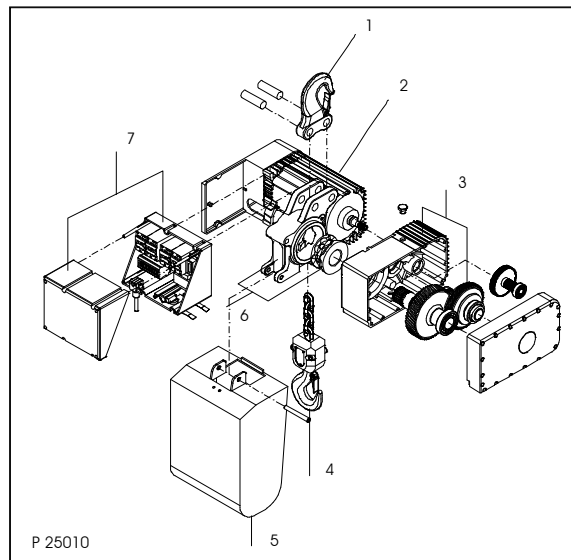
- Motor
- Gearbox
- Brake
- Chain sprocket and chain guide
- Bottom block
- Chain container
- Controls



Main components for **LM1, LM05** chain hoist



Main components of **LM10** chain hoists



Main components for **LM16-20-25** chain hoist.