



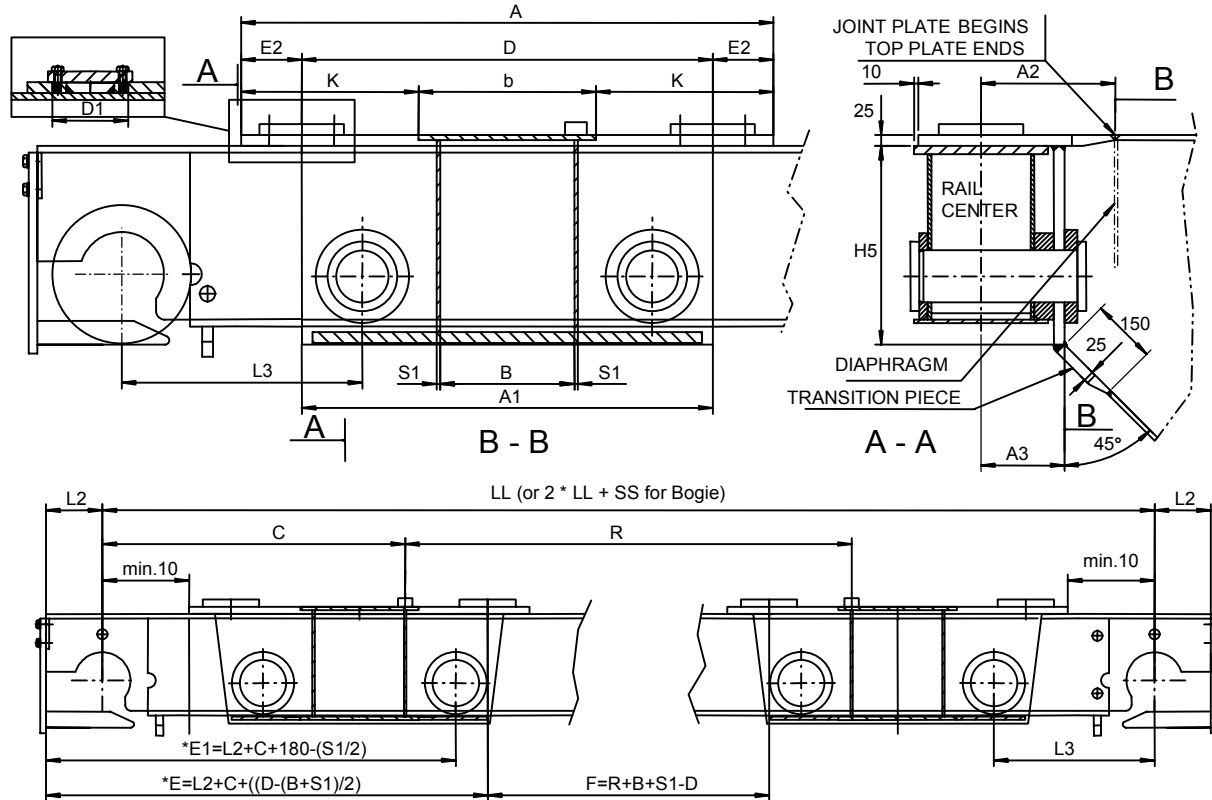
## 10 SIDE JOINT PLATE

### 10.1 Side Joint Plate Code

| SHxxN  | GO1 | C = | B = | K = | R = | S1 = | T4 = | T5 = |
|--|-----|-----|-----|-----|-----|------|------|------|
| <b>All dimensions in [mm]</b>                        |     |     |     |     |     |      |      |      |
| C = Center distance from crane wheel to trolley rail |     |     |     |     |     |      |      |      |
| B = Inside distance between box girder side plates   |     |     |     |     |     |      |      |      |
| K = Concentricity location of girder and joint plate |     |     |     |     |     |      |      |      |
| R = Rail gauge                                       |     |     |     |     |     |      |      |      |
| S1 = Thickness of box girder side plate              |     |     |     |     |     |      |      |      |
| T4 = Thickness of box girder top plate               |     |     |     |     |     |      |      |      |
| T5 = Thickness of box girder bottom plate            |     |     |     |     |     |      |      |      |
| Joint plate type/size (G01, G02...)                  |     |     |     |     |     |      |      |      |
| Side joint plate code (xx = wheel diameter code)     |     |     |     |     |     |      |      |      |
| 25, 32, 40, 50                                       |     |     |     |     |     |      |      |      |

The side joint plate is available only for the SHR25, SHR32, SHR40, and SHR50 end trucks.

## 10.2 Side Joint Plate Dimensions



Dimension H5 is found in the End Truck Dimensions tables in the next section.

| Joint plate | bmax mm | B mm | A mm | A1 mm | D mm | D1 mm | E2 mm | K ± Tol. mm | P2 mm |
|-------------|---------|------|------|-------|------|-------|-------|-------------|-------|
| G01         | 490     | 390  | 1020 | 1020  | 740  | 175   | 140   | 265.0 ±0    | 960   |
| G02         | 645     | 545  | 1230 | 1175  | 950  | 175   | 140   | 292.5 ±25   | 1180  |
| G03         | 845     | 845  | 1580 | 1475  | 1300 | 175   | 140   | 317.5 ±50   | 1560  |
| G04         | 390     | 390  | 1080 | 1020  | 730  | 205   | 175   | 295.0 ±30   | 950   |
| G05         | 545     | 545  | 1300 | 1175  | 950  | 205   | 175   | 327.5 ±60   | 1180  |
| G06         | 845     | 845  | 1680 | 1475  | 1330 | 205   | 175   | 367.5 ±100  | 1560  |

| End truck | Joint | A2 mm | A3 mm | L2 mm | L 3min mm |
|-----------|-------|-------|-------|-------|-----------|
| SHR25     | SH25N | 310   | 193   | 195   | 310       |
| SHR32     | SH32N | 310   | 193   | 195   | 345       |
| SHR40     | SH40N | 320   | 205   | 235   | 365       |
| SHR50     | SH50N | 345   | 230   | 285   | 420       |

**Note:** The size of the joint plate and the position of the joint plate on the end truck are based on the box girder width. If the final width of the box girder does not match the QuoteMaster™ generated box girder width (dimension B), the crane builder should inform the actual box girder width in order to ensure the joint plates are properly sized and positioned.

Box girder dimensions B, S1, T4, and T5 are given for reference only. The crane builder is responsible for the design of the box girder.